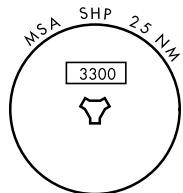
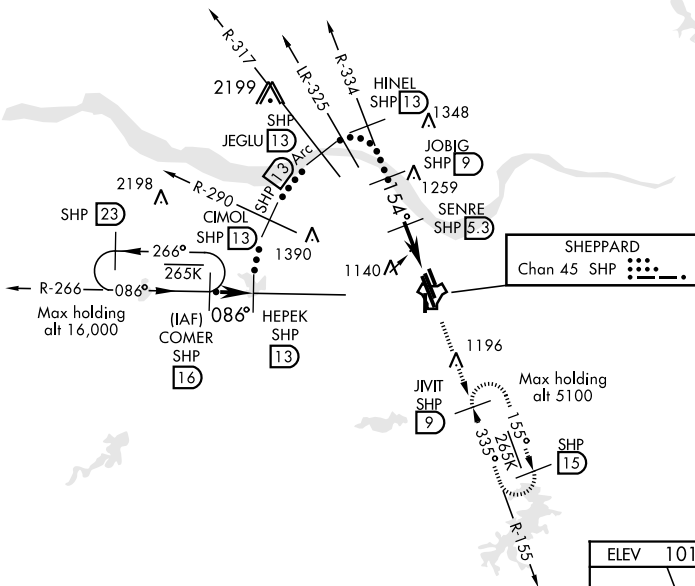
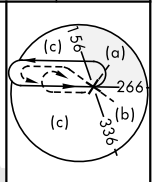


# HI-TACAN RWY 15C

TACAN SHP Chan 45	APCH CRS 154°	Rwy Ldg THRE 10,003 Arpt Elev 1019	JAL-454 [USAF]	SHEPPARD AFB/WICHITA FALLS MUNI (KSPS)
ATIS ★ 132.05 269.9	SHEPPARD APP CON 118.2 269.025	SHEPPARD TOWER ★ 119.75 (279.525) (CTAF)	GND CON 125.5 289.4	CLNC DEL 121.2 282.225
▼ * When ALS inop, increase CAT CDE vis to 1½ miles. ** Circling not authorized W of Rwy 15R-33L.			ALSF-1 	MISSED APPROACH: Climb and maintain 3100, intercept SHP TACAN R-155 to SHP R-155/9 DME (JIVIT) and hold.
ASR				

CAUTION: Do not confuse parallel taxiway with Rwy 15R-33L.

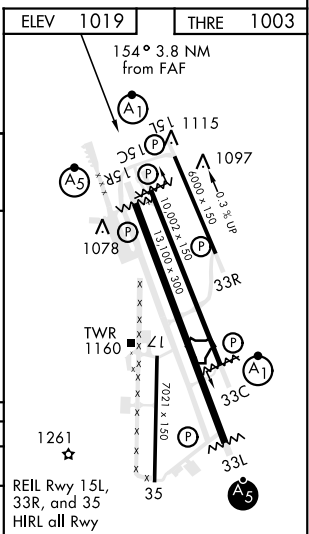


SC-2, 10 SEP 2020 to 08 OCT 2020

SC-2, 10 SEP 2020 to 08 OCT 2020

EMERG SAFE ALT 100 NM 4600

COMER R-266 HEPEK R-290 CIMOL R-317 JEGLU R-334 HINEL R-334 10,000 086° 6000 3200 2800 154° 2300 2300 3.3 NM .5 3.09° TCH 46		VGSIs and Descent Angle not coincident. 3100 SHP R-155 JIVIT SHP 9	
CATEGORY	C	D	E
S-15C *	1420-¾	417 (500-¾)	
CIRCLING **	1480-1½ 461 (500-1½)	2020-3 1001 (1100-3)	2080-3 1061 (1100-3)



# HI-TACAN RWY 15C