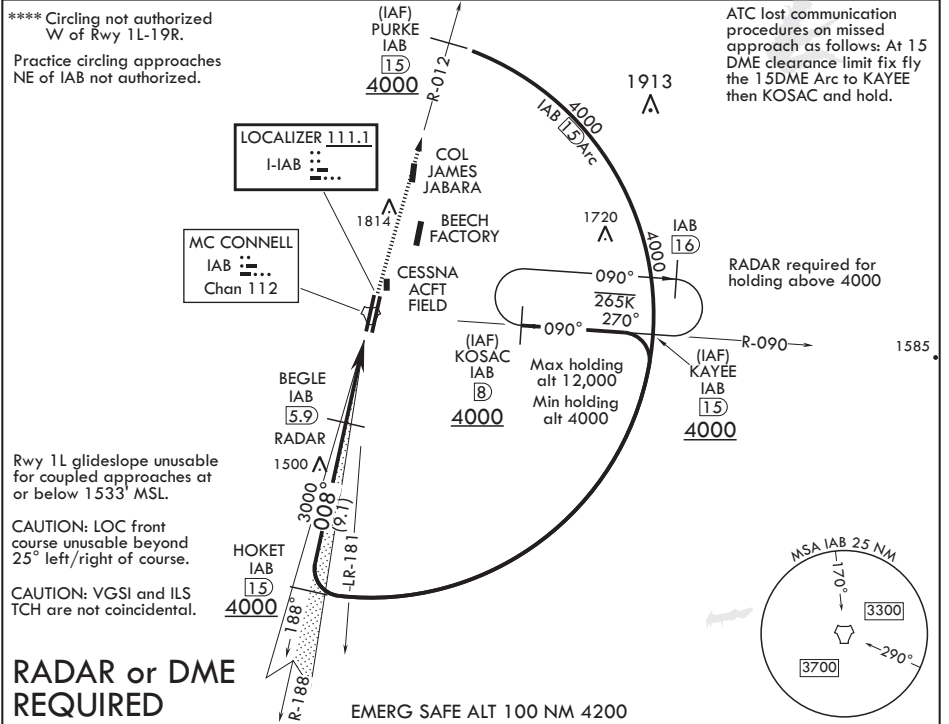


WICHITA, KANSAS

ILS or LOC RWY 1L

LOC I-AB 111.1	APCH CRS 008°	Rwy Idg 12,000 TDZE 1347 Arpt Elev 1372	1L 12,007	1R 1347	AL-453 (USAF)	MC CONNELL AFB (KIAB)
<p>⚠ * When ALS inop, increase RVR to 40 and vis to 3/4 mile. ** When ALS inop, increase RVR to 55 and vis to 1 mile. *** When ALS inop, increase CAT AB RVR to 55 and vis to 1 mile, CAT CDE RVR to 60 and vis to 1 1/8.</p>			Rwy 1L ALS-F-1 	Rwy 1R SSALR 	MISSED APPROACH: Climb to 4000 via IAB TACAN R-012 to 15 DME (PURKE). Expect further clearance from ATC.	

D ATIS 124.65 269.9	WICHITA APP CON 134.8 269.1	TOWER 127.25 291.775	GND CON 118.0 275.8
-------------------------------	---------------------------------------	--------------------------------	-------------------------------



↑LOC only

4000 PURKE IAB 15
R-012

ELEV 1372

TDZE 1L 1347
TDZE 1R 1347

HOKET IAB 15

008° Intcp Lczt

BEGLE IAB 5.9 RADAR

3000

GS 3.00° TCH 55

4.5 NM

1.9

JIMIT IAB 1.4

TACAN

1551 A

TWR 1442

0.3% UP

12,000 x 1.50
12,007 x 1.50

661 P A1
761 P A1

1L 1R A3

008° 5NM from FAF

HIRL all Rwys

CATEGORY	A	B	C	D	E
S-ILS 1L*	1547	24	200	(200-1/2)	
S-LOC 1L**	1700/24	353 (400-1/2)	1700/35	353 (400-3/4)	
SIDESTEP 1R***	1720	40	373	(400-3/4)	
C CIRCLING****	1900-1	528 (600-1)	1900-1 1/2 528 (600-1 1/2)	2400-3 1028 (1100-3)	

FAF to MAP 4.5 NM					
Knots	60	90	120	150	180
Min:Sec	4:30	3:00	2:15	1:48	1:30

NC-2, 10 SEP 2020 to 08 OCT 2020

NC-2, 10 SEP 2020 to 08 OCT 2020