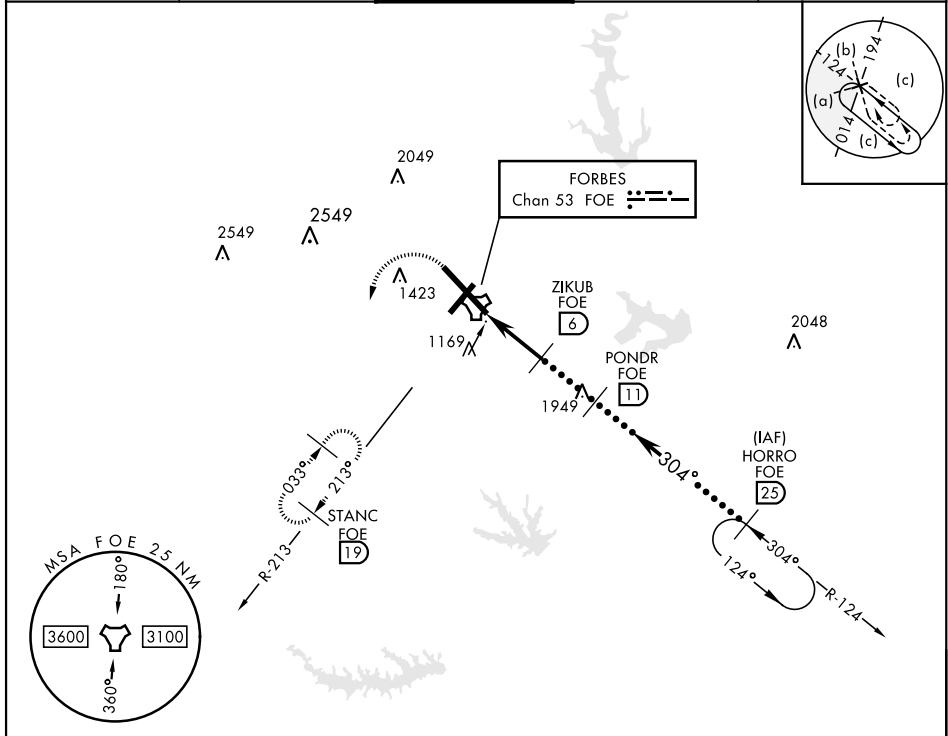


TOPEKA, KANSAS

# HI-TACAN RWY 31

TACAN FOE Chan <b>53</b>	APCH CRS <b>304°</b>	Rwy Idg <b>12,803</b> TDZE <b>1037</b> Arprt Elev <b>1078</b>	JAL-424 [USAF]	TOPEKA RGNL (KFOE)
<b>▽</b> * For ALS inop, increase CAT CDE vis to 1 3/8.			<b>MALSR</b> 	<b>MISSED APPROACH:</b> Climbing left turn to 3000 via heading 190° and FOE TACAN R-213 to STANC/19° DME and hold.

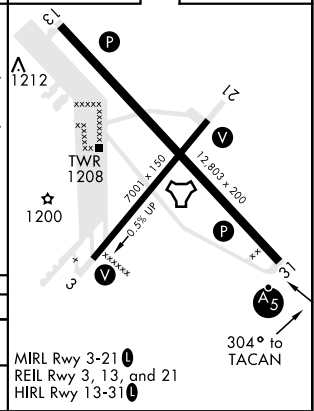
ATIS <b>128.25</b>	KANSAS CITY CENTER <b>123.8 343.7</b>	FORBES TOWER ★ <b>120.8 (CTAF) 340.2</b>	GND CON <b>118.425 275.8</b>	UNICOM <b>122.95</b>
-----------------------	--	---	---------------------------------	-------------------------



EMERG SAFE ALT 100 NM 3600

ELEV 1078	TDZE 1037
-----------	-----------

<b>3000</b> FOE R-213 <b>STANC</b> FOE <b>19</b>	<b>HORRO</b> R-124 <b>25</b> <b>FL 250</b> 10,000
<b>TACAN</b> <b>BUMKE</b> FOE <b>8</b> <b>ZIKUB</b> FOE <b>6</b> <b>PONDNR</b> FOE <b>11</b> <b>2700</b>	<b>3000</b> <b>2.90°</b> TCH 58
CATEGORY      C                      D                      E	
S-31 *                      1520/50      483 (500-1)	
<b>CIRCLING</b>	1580-1 1/2 502 (600-1 1/2)      1700-2 622 (700-2)      1720-2 1/4 642 (700-2 1/4)



TOPEKA, KANSAS                      38° 57' N-95° 40' W                      TOPEKA RGNL (KFOE)

Amdt 3A 08DEC16

# HI-TACAN RWY 31

NC-2, 10 SEP 2020 to 08 OCT 2020

NC-2, 10 SEP 2020 to 08 OCT 2020