


WAAS CH <b>61226</b> <b>W05A</b>	APP CRS <b>047°</b>	Rwy Idg TDZE Apt Elev	<b>5852</b> <b>801</b> <b>801</b>
--	------------------------	-----------------------------	---

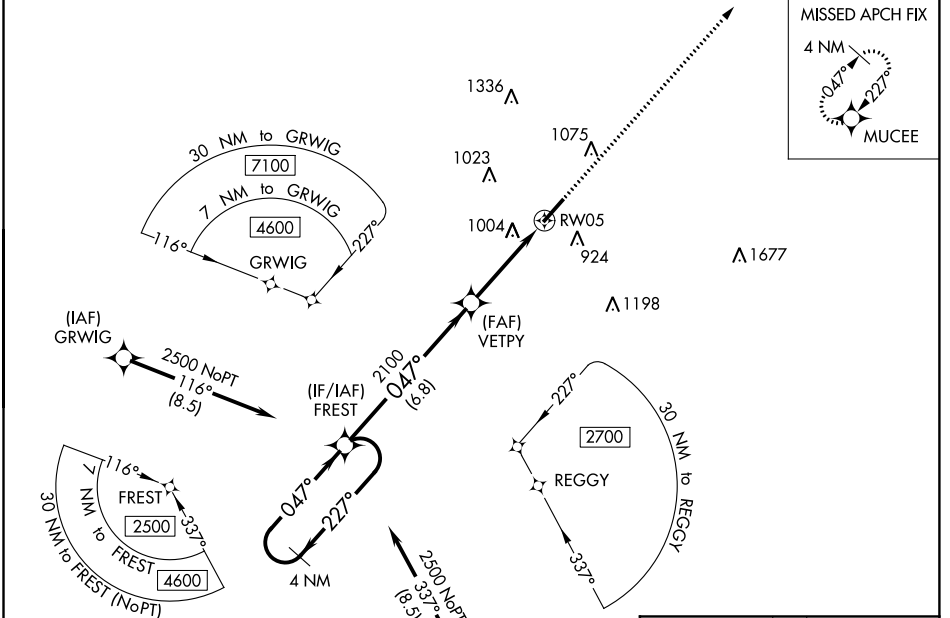
# RNAV (GPS) RWY 5

SPARTANBURG DOWNTOWN MEMORIAL/SIMPSON FIELD (SPA)

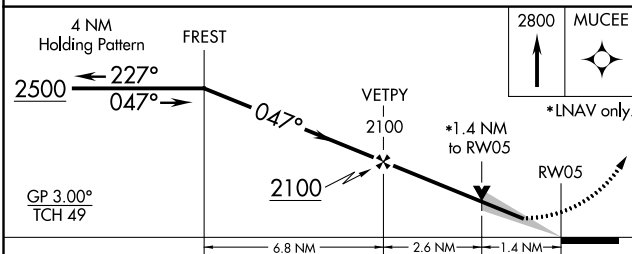
**⚠** For uncompensated Baro-VNAV systems, LNAV/VNAV NA below -16°C (4°F) or above 39°C (102°F). DME/DME RNP-0.3 NA. VDP and Baro-VNAV NA when using Greer altimeter setting. When local altimeter setting not received, use Greer altimeter setting and increase all DA 53 feet and all MDA 60 feet; increase LNAV/VNAV all Cats visibility ¼ mile and LNAV Cat C and D and Circling Cat C visibility ½ mile.

**MALSR**  
 MISSED APPROACH:  
 Climb to 2800 direct  
 MUECE and hold.

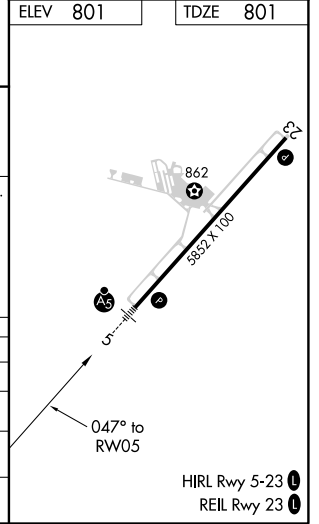
AWOS-3 <b>133.925</b>	GREER APP CON * <b>119.4 350.2</b>	CLNC DEL <b>120.55</b>	UNICOM <b>123.0</b> (CTAF) 
--------------------------	---------------------------------------	---------------------------	---



ELEV 801	TDZE 801
----------	----------



CATEGORY	A	B	C	D
LPV DA		1001-½	200 (200-½)	
LNAV/VNAV DA		1339-1⅞	538 (600-1⅞)	
LNAV MDA	1280-½	479 (500-½)	1280-1	479 (500-1)
CIRCLING	1320-1	519 (600-1)	1320-1½	1380-2
			519 (600-1½)	579 (600-2)



# RNAV (GPS) RWY 5

SE-2, 10 SEP 2020 to 08 OCT 2020

SE-2, 10 SEP 2020 to 08 OCT 2020