

APP CRS	Rwy Idg	9120
135°	TDZE	18
	Apt Elev	22

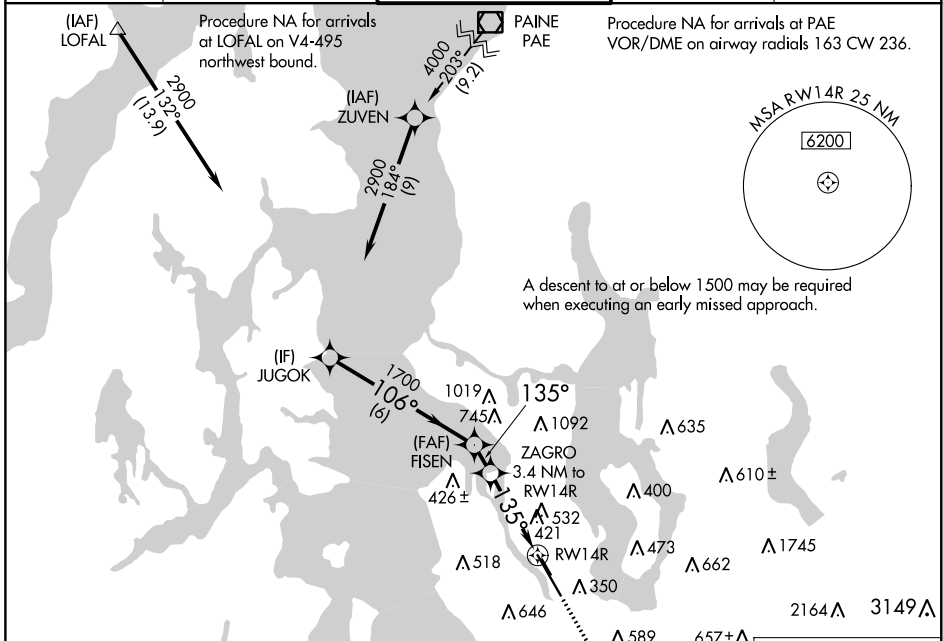
RNAV (GPS) Y RWY 14R

BOEING FIELD/KING COUNTY INTL (BFI)

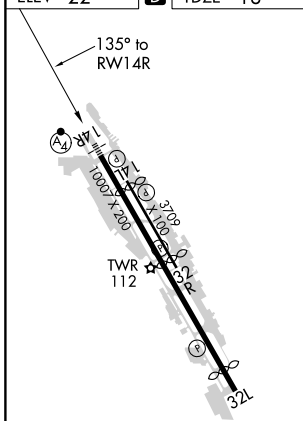
⚠ Circling NA for Cats C and D northeast of Rwy 14L-32R. DME/DME RNP -0.3 NA. For inop ALS, increase LNAV Cat C and D visibility to 1% SM. Rwy 14R helicopter visibility below RVR 4000 NA. Circling Rwy 32R NA at night.

MALSF MISSED APPROACH: Climb direct OCEZE, cross OCEZE at or below 1500, then climb to 6400 on track 123° to BLAKO and hold, continue climb-in-hold to 6400.

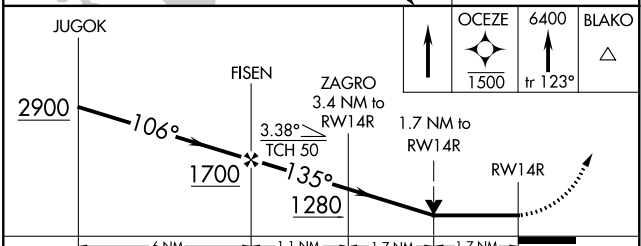
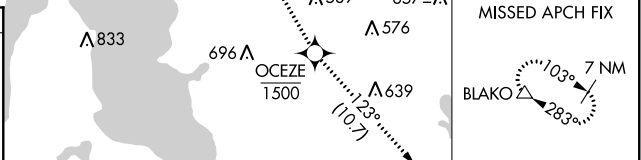
ATIS	SEATTLE APP CON	BOEING TOWER	GND CON	CLNC DEL
127.75	119.2 284.7	120.6 257.8	121.9	132.4



ELEV 22	D	TDZE 18
---------	----------	---------



MIRL Rwy 14L-32R
HIRL Rwy 14R-32L
REIL Rws 14L, 32L and 32R



CATEGORY	A	B	C	D
LNNAV MDA	680/40	662 (700-¾)	680-1¾	662 (700-1¾)
C CIRCLING	760-1 738 (800-1)	880-1¼ 858 (900-1¼)	960-2¾ 938 (1000-2¾)	960-3 938 (1000-3)

NW-1, 10 SEP 2020 to 08 OCT 2020

NW-1, 10 SEP 2020 to 08 OCT 2020