


APP CRS 135°	Rwy Idg 9120
	TDZE 18
	Apt Elev 22

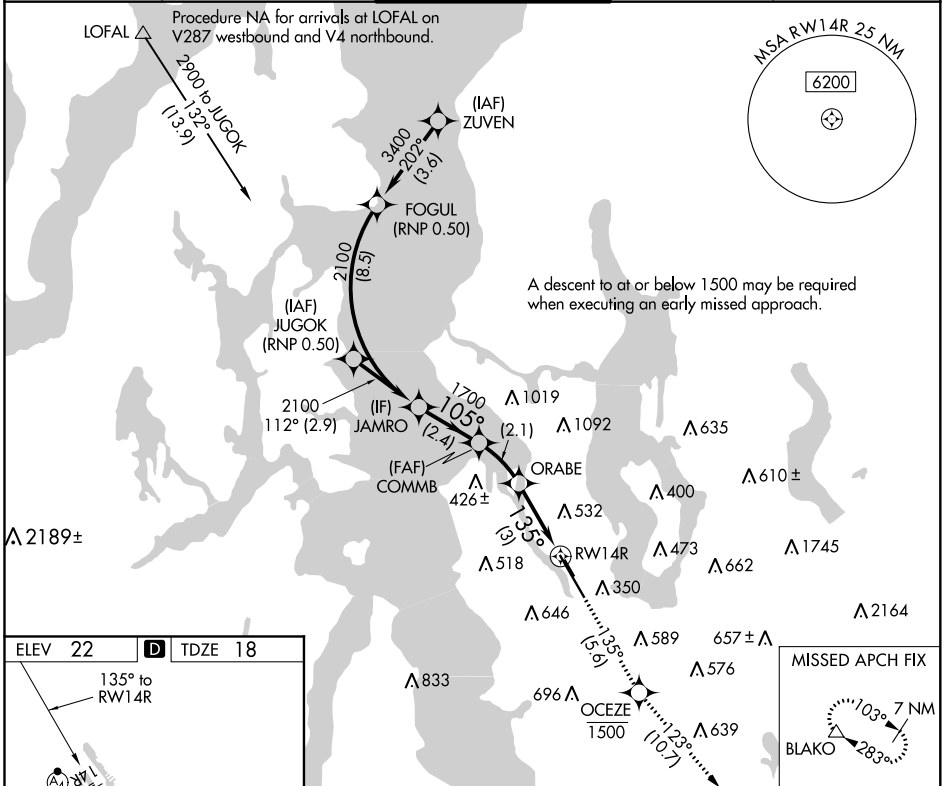
RNAV (RNP) Z RWY 14R

BOEING FIELD/KING COUNTY INTL (BFI)

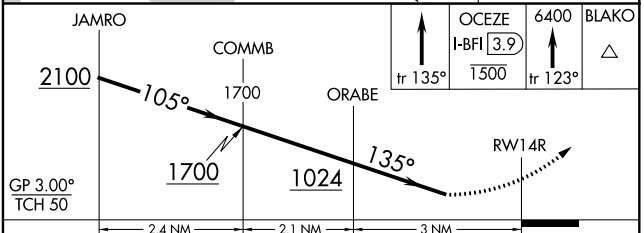
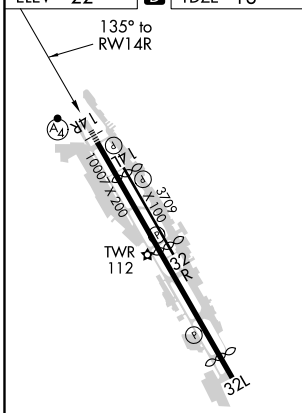
▼ GPS and RF required. Inop table does not apply to RNP 0.30 DA.
▲ For inop MALSIF, increase RNP 0.15 DA Cat D visibility to 1¼ mile.
 For uncompensated Baro-VNAV systems, procedure NA below -6°C (22°F) or above 54°C (130°F).

MALSIF  MISSED APPROACH: Climb on track 135° to cross OCEZE at or below 1500 then climb to 6400 on track 123° to BLAKO and hold, continue climb-in-hold to 6400.

ATIS 127.75	SEATTLE APP CON 119.2 284.7	BOEING TOWER 120.6 257.8	GND CON 121.9	CLNC DEL 132.4
-----------------------	---------------------------------------	------------------------------------	-------------------------	--------------------------



ELEV 22	D	TDZE 18
---------	----------	---------



CATEGORY	A	B	C	D
RNP 0.15 DA		542-1½	524 (600-1½)	
RNP 0.30 DA		742-2½	724 (800-2½)	

AUTHORIZATION REQUIRED

NW-1, 10 SEP 2020 to 08 OCT 2020

NW-1, 10 SEP 2020 to 08 OCT 2020