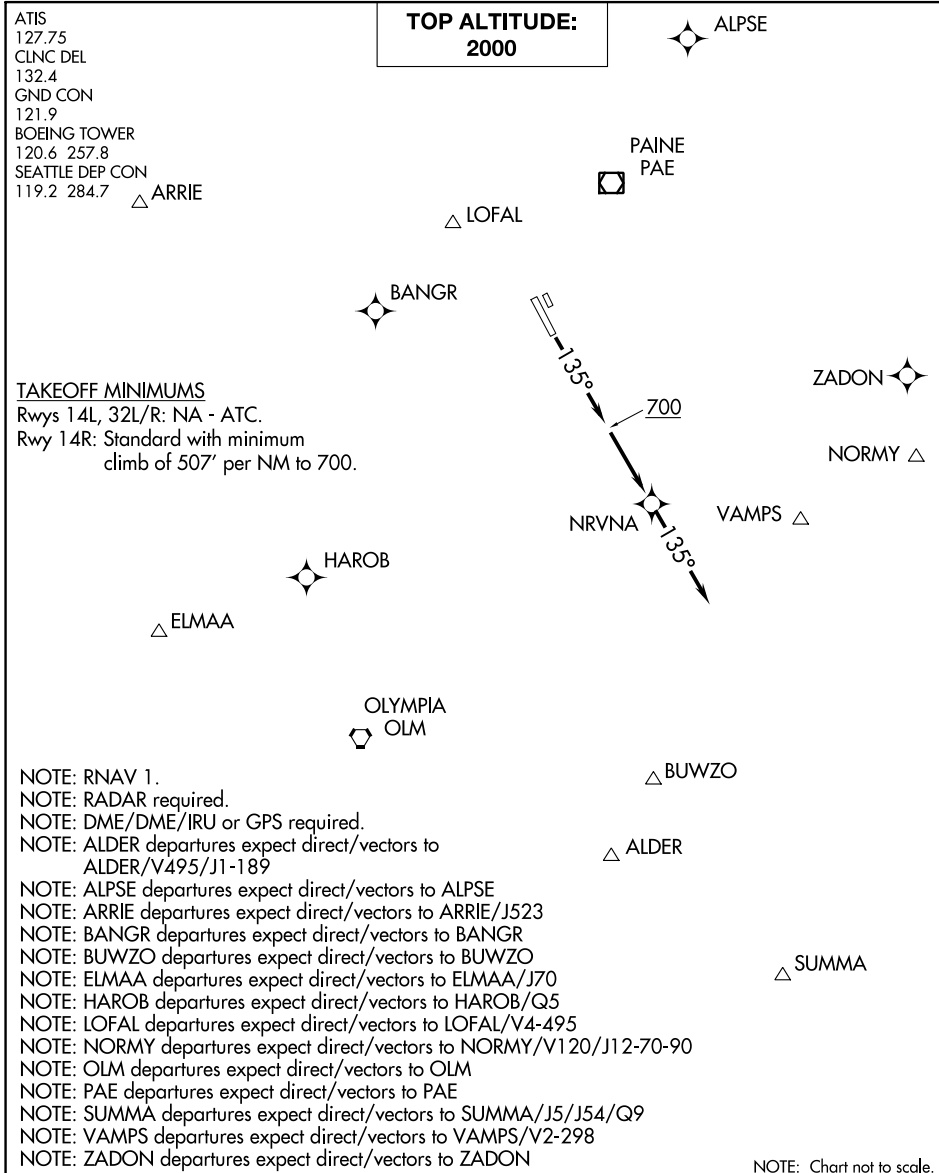


(NRVNA1.NRVNA) 17285

AL-384 (FAA)

BOEING FIELD/KING COUNTY INTL (BFI)  
SEATTLE, WASHINGTON

# NRVNA ONE DEPARTURE (RNAV)



NW-1, 10 SEP 2020 to 08 OCT 2020

NW-1, 10 SEP 2020 to 08 OCT 2020

**DEPARTURE ROUTE DESCRIPTION**

**TAKEOFF RUNWAY 14R:** Climb heading 135° to 700, then direct NRVNA, then on track 135° for RADAR vectors to assigned route/fix, maintain 2000 or as assigned by ATC.  
Expect clearance to filed altitude/flight level within three minutes after departure.

**NRVNA ONE DEPARTURE (RNAV)**  
(NRVNA1.NRVNA) 12OCT17

SEATTLE, WASHINGTON  
BOEING FIELD/KING COUNTY INTL (BFI)