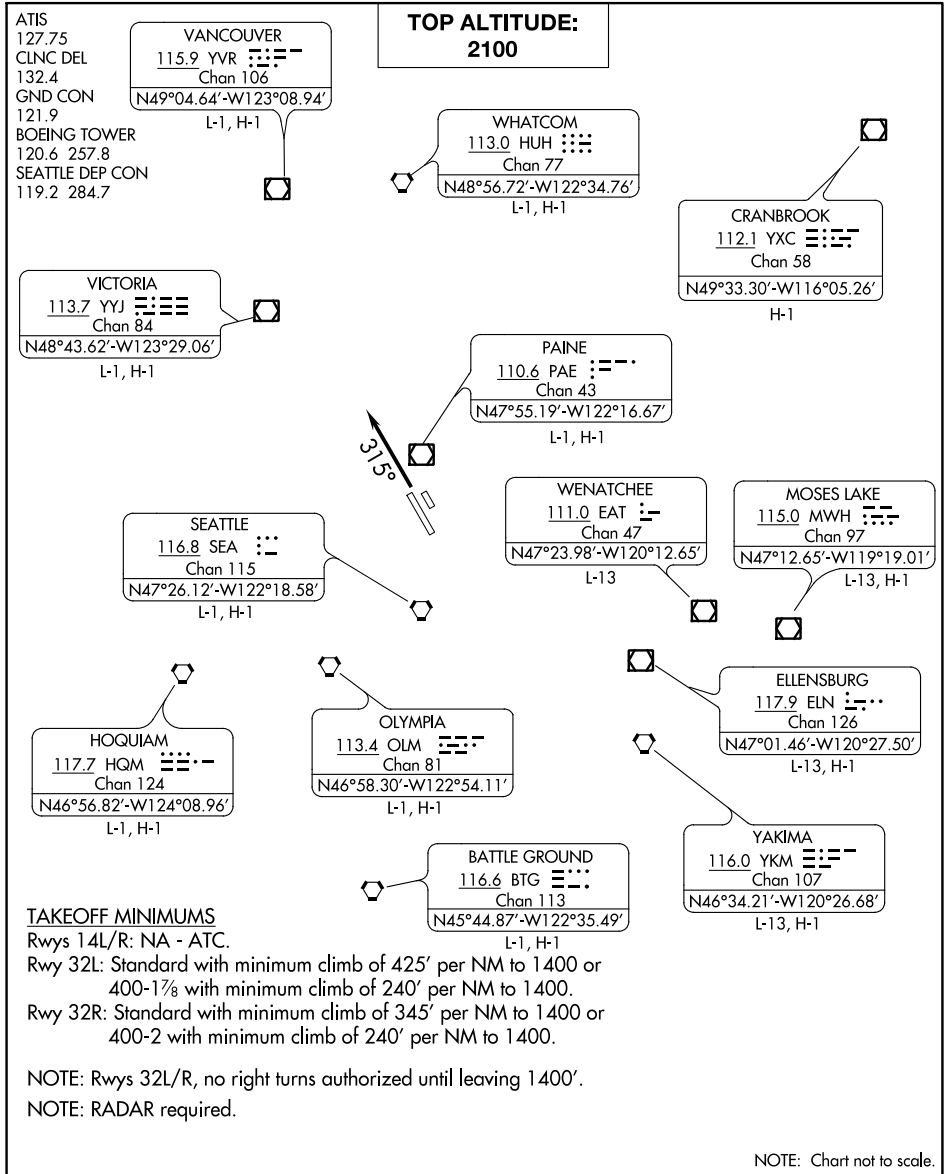


NEEDLE ONE DEPARTURE

BOEING FIELD/KING COUNTY INTL (BFI)
SEATTLE, WASHINGTON

AL-384 (FAA)



NW-1, 10 SEP 2020 to 08 OCT 2020

NW-1, 10 SEP 2020 to 08 OCT 2020



DEPARTURE ROUTE DESCRIPTION

TAKEOFF RUNWAYS 32L/R: Climb heading 315°, maintain 2100 or ATC assigned altitude, for RADAR vectors to assigned route/fix, expect clearance to filed altitude within 3 minutes after departure.

NEEDLE ONE DEPARTURE

SEATTLE, WASHINGTON
BOEING FIELD/KING COUNTY INTL (BFI)