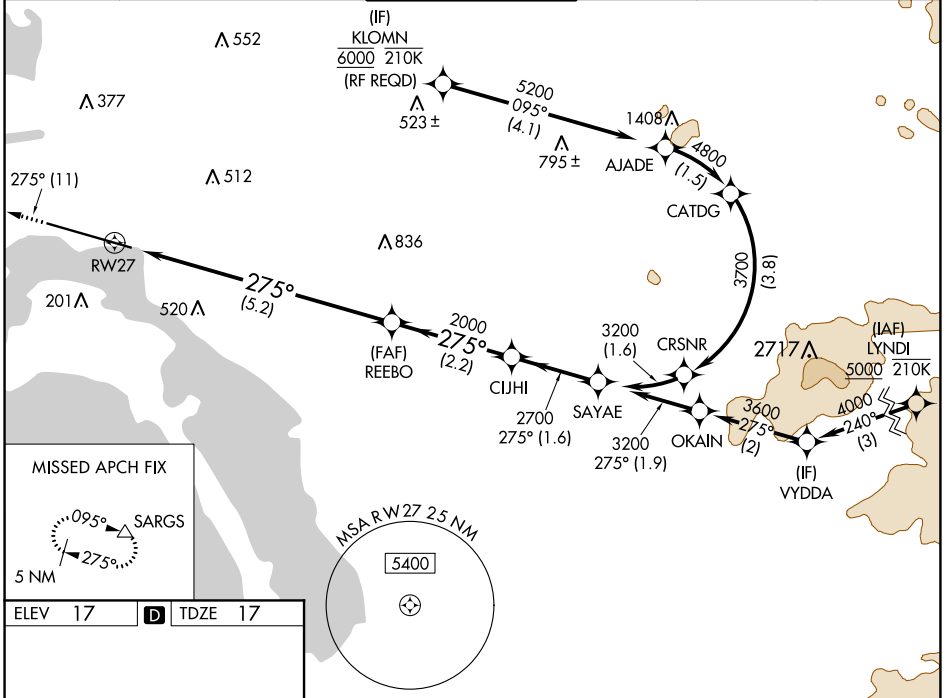


APP CRS 275°	Rwy Idg TDZE Apt Elev	7590 17 17
------------------------	-----------------------------	---------------------------------------

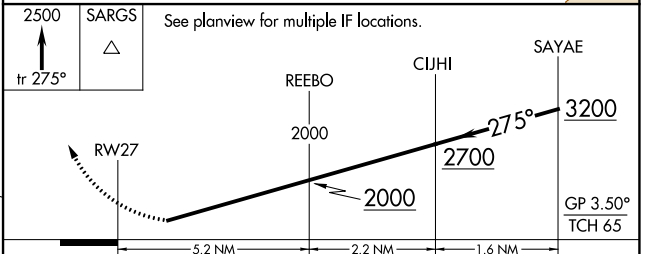
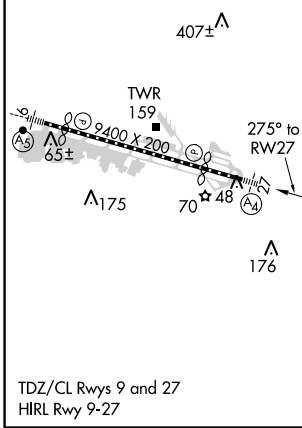
RNAV (RNP) Z RWY 27

SAN DIEGO INTL (SAN)

RNP AR APCH.		MALS	MISSED APPROACH: Climb to 2500 on track 275° to SARGs and hold.		
<p>▼ For uncompensated Baro-VNAV systems, procedure NA below 6°C or above 46°C. Straight-in Rwy 27 at night, operational VGSI required, remain on or above VGSI glidepath until threshold. For inop ALS, increase RNP 0.30 all Cats visibility to 2½ SM.</p>					
D-ATIS 134.8	SOCAL APP CON 119.6 363.1 (WEST) 124.35 279.625 (EAST)	LINDBERGH TOWER 118.3 338.225	GND CON 123.9	CLNC DEL 125.9	CPDLC



ELEV 17	D	TDZE 17
---------	----------	---------



CATEGORY	A	B	C	D
RNP 0.11 DA		617-1½	600 (600-1½)	
RNP 0.30 DA		778-2	761 (800-2)	

AUTHORIZATION REQUIRED

SW-3, 10 SEP 2020 to 08 OCT 2020

SW-3, 10 SEP 2020 to 08 OCT 2020