

BORDER SEVEN DEPARTURE

AL-373 (FAA)

SAN DIEGO INTL (SAN)
SAN DIEGO, CALIFORNIA

SW-3, 10 SEP 2020 to 08 OCT 2020

DEPARTURE ROUTE DESCRIPTION

TAKEOFF RUNWAY 9: Climb on heading 093° to intercept MZB VORTAC R-096 to BROWS INT. Thence. . . .

TAKEOFF RUNWAY 27: Climb on heading 278° until PGY 19 DME, then left turn on heading 123° to intercept PGY VORTAC R-260 and R-069 to BROWS INT. Thence. . . .

. . . . (transition) or (assigned route). Maintain assigned altitude. Expect filed altitude/flight level 10 minutes after departure.

IMPERIAL TRANSITION (BRDR7.IPL): From over BROWS INT on PGY R-069 and IPL R-250 to IPL VORTAC.

JULIAN TRANSITION (BRDR7.JLI): From over BROWS INT on JLI R-182 to JLI VORTAC.

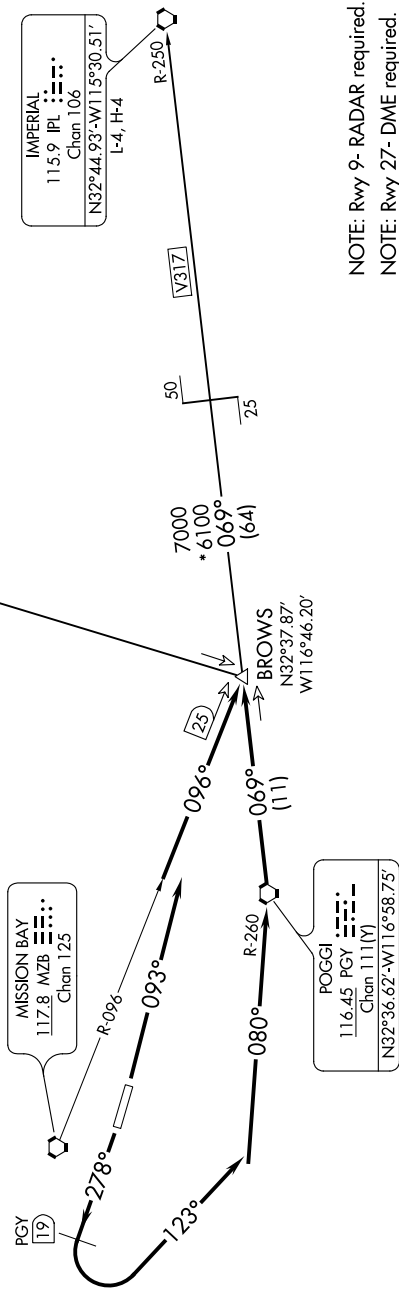
TOP ALTITUDE: ASSIGNED BY ATC

D-ATIS 134.8
CLNC DEL 125.9
CPDLC
GND CON 123.9
LUNDBERGH TOWER 118.3 338.225
SOCAL DEP CON
EAST 124.35 279.625
WEST 119.6 363.1

JULIAN
114.0 JLI
Chan 87
N33°08.43'-W116°35.16'
L-4, H-4

TAKEOFF MINIMUMS

Rwy 9: 400-1 with minimum climb of 610' per NM to 1900 or standard with minimum climb of 686' per NM to 1900.
Rwy 27: 400-2½ or standard with minimum climb of 353' per NM to 400.



MISSION BAY
117.8 MZB
Chan 125

POGGI
116.45 PGY
Chan 111(V)
N32°36.62'-W116°58.75'

IMPERIAL
115.9 IPL
Chan 106
N32°44.93'-W115°30.51'
L-4, H-4

NOTE: Rwy 9- RADAR required.
NOTE: Rwy 27- DME required.

NOTE: Chart not to scale.

BORDER SEVEN DEPARTURE

SW-3, 10 SEP 2020 to 08 OCT 2020