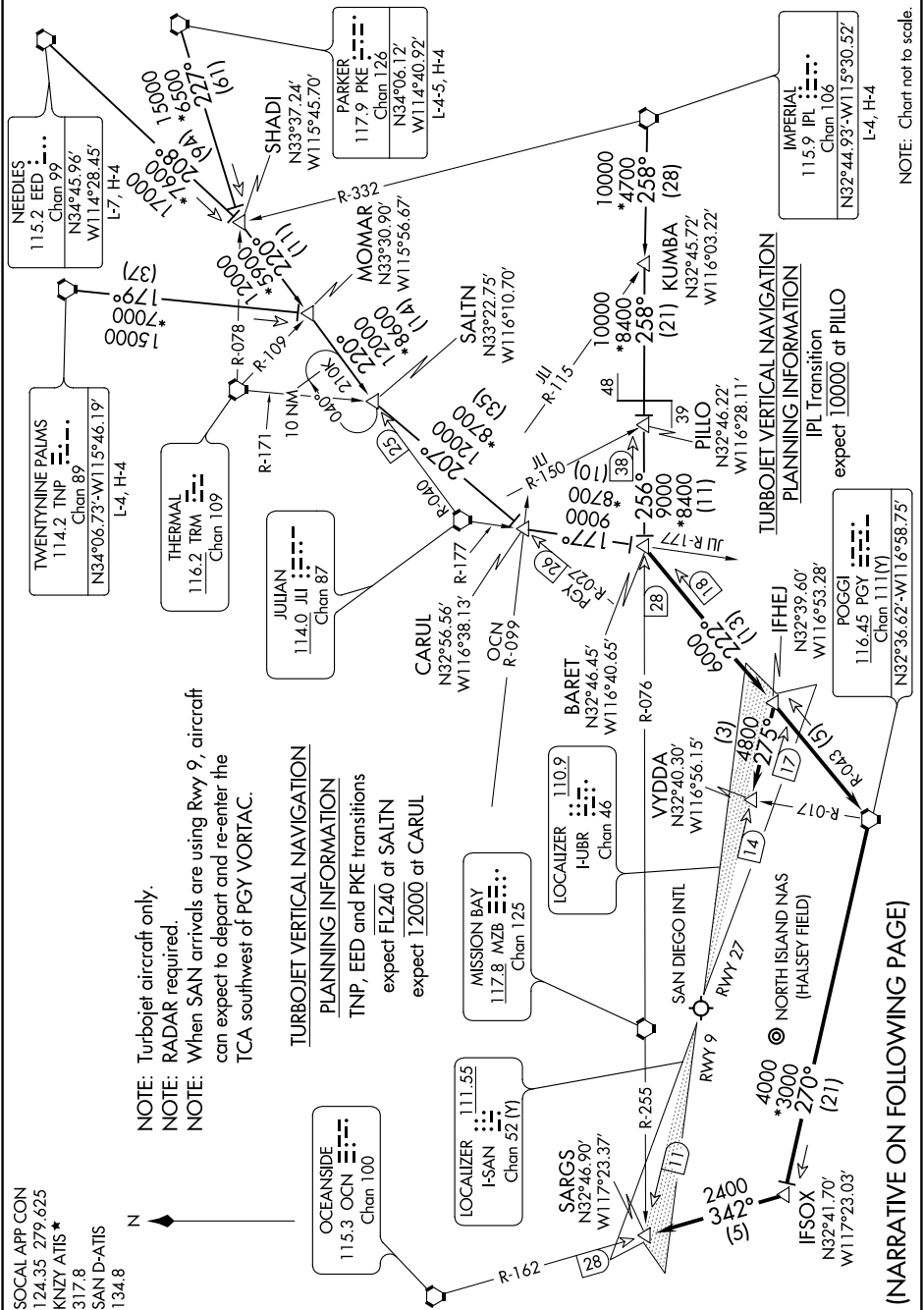


BARET FIVE ARRIVAL

AL-373 (FAA)

SAN DIEGO, CALIFORNIA

SW-3, 10 SEP 2020 to 08 OCT 2020



NOTE: Turbojet aircraft only.
 NOTE: RADAR required.
 NOTE: When SAN arrivals are using Rwy 9, aircraft can expect to depart and re-enter the TCA southwest of PGY VORTAC.

TURBOJET VERTICAL NAVIGATION PLANNING INFORMATION
 TNP, EED and PKE transitions
 expect 12000 at SALTN
 expect 12000 at CARUL

TURBOJET VERTICAL NAVIGATION PLANNING INFORMATION
 IPL Transition
 expect 10000 at PILLO

(NARRATIVE ON FOLLOWING PAGE)

NOTE: Chart not to scale.

BARET FIVE ARRIVAL

SAN DIEGO, CALIFORNIA

SW-3, 10 SEP 2020 to 08 OCT 2020