

VOR SSF 108.4	APP CRS 337°	Rwy Idg 3756 TDZE 570 Apt Elev 577
-------------------------	------------------------	---

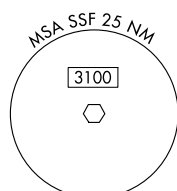
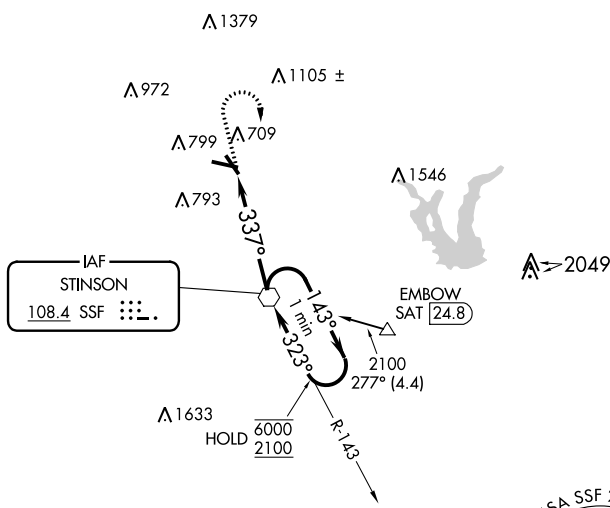
VOR RWY 32

STINSON MUNI (SSF)

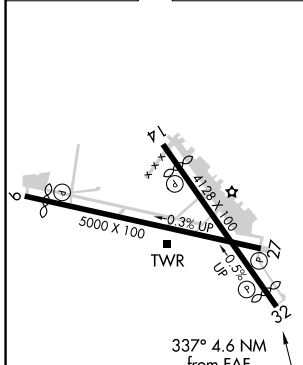
▽ Rwy 32 helicopter visibility reduction below 1 SM NA.
Straight-in Rwy 32 NA at night, Circling Rwy 9, 32 NA at night.

MISSED APPROACH: Climb to 1400 then climbing right turn to 2500 direct SSF VOR and hold.

ATIS 128.8	SAN ANTONIO APP CON 125.7 290.225	STINSON TOWER* 118.2(CTAF) 379.9	GND CON 121.7 379.9	CLNC DEL 121.7	UNICOM 122.95
----------------------	---	--	-------------------------------	--------------------------	-------------------------

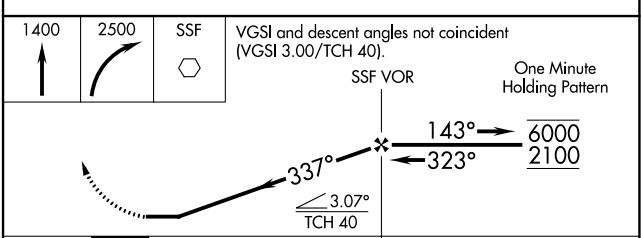


ELEV 577	TDZE 570
----------	----------



REIL Rws 9, 14, 27 and 32
MIRL Rws 9-27 and 14-32
FAF to MAP 4.6 NM

Knots	60	90	120	150	180
Min:Sec	4:36	3:04	2:18	1:50	1:32



CATEGORY	A	B	C	D
S-32	1020-1	450 (500-1)	1020-1 ³ / ₈ 450 (500-1 ³ / ₈)	NA
CIRCLING	1040-1 463 (500-1)	1100-1 523 (600-1)	1100-1 ¹ / ₂ 523 (600-1 ¹ / ₂)	NA

SC-3, 10 SEP 2020 to 08 OCT 2020

SC-3, 10 SEP 2020 to 08 OCT 2020