


LOC/DME I-SLE 110.3 Chan 40	APP CRS 313°	Rwy Idg 5811 TDZE 214 Apt Elev 214
--	------------------------	---

LOC Y RWY 31

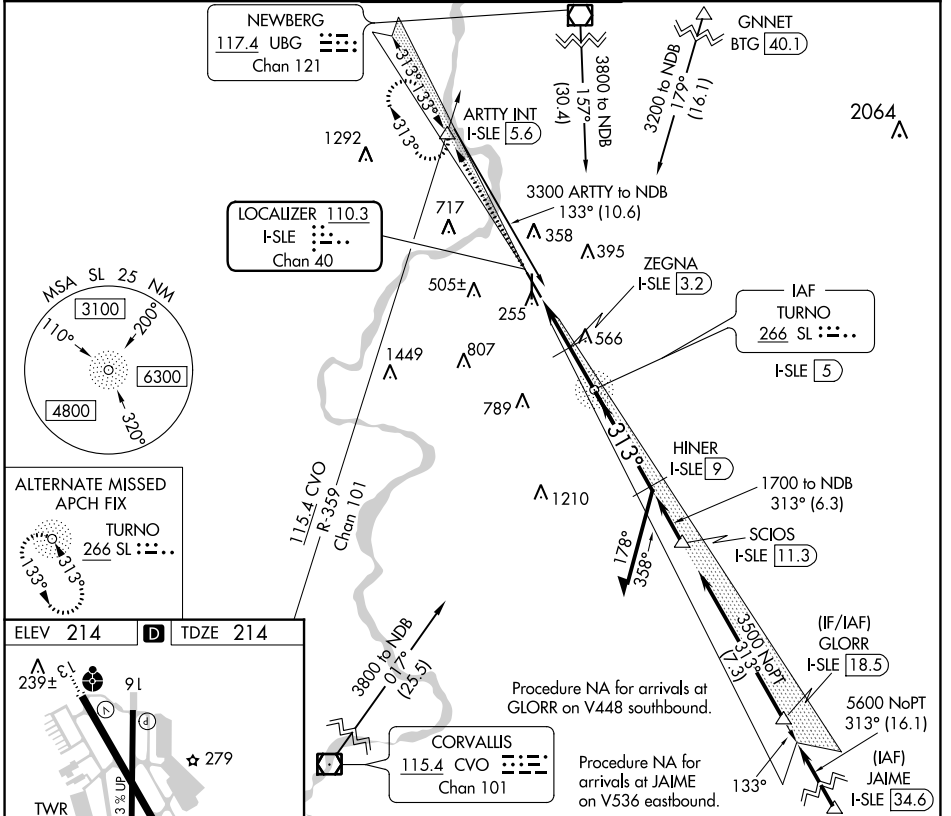
MCNARY FIELD (SLE)

DME required. RADAR required.

⚠ When local altimeter setting not received, use Mc Minnville altimeter setting: increase all MDA 60 feet; increase S-LOC 31 Cat C and D visibility to 1½ SM, Circling Cat C visibility to 2½ SM. For inop ALS, increase S-LOC 31 Cats C and D visibility to 1½ SM. For inop ALS when using Mc Minnville altimeter setting, increase S-LOC 31 Cats C and D visibility to 1¾ SM. VDP NA when using Mc Minnville altimeter setting.

MALSRL
 MISSED APPROACH: Climb to 4000 on I-SLE Localizer NW course to ARTY INT/ I-SLE 5.6 DME and hold, continue climb-in-hold to 4000.

ATIS 124.55	SEATTLE CENTER 125.8 291.7	SALEM TOWER ★ 119.1 (CTAF) 0 257.2	GND CON 121.9	UNICOM 122.95
-----------------------	--------------------------------------	--	-------------------------	-------------------------



Procedure NA for arrivals at GLORR on V448 southbound.

Procedure NA for arrivals at JAIME on V536 eastbound.

Procedure NA for arrivals at GLORR on V448 southbound.

Procedure NA for arrivals at JAIME on V536 eastbound.

ARTY INT I-SLE NW crs

ZEGNA I-SLE 3.2

HINER I-SLE 9

SL NDB I-SLE 5

Remain within 10 NM

CATEGORY	A	B	C	D
S-LOC 31	780/24	566 (600-½)	780-1¼	566 (600-1¼)
CIRCLING	900-1 686 (700-1)	960-1 746 (800-1)	1060-2½ 846 (900-2½)	1260-3 1046 (1100-3)

NW-1, 10 SEP 2020 to 08 OCT 2020

NW-1, 10 SEP 2020 to 08 OCT 2020

LOC Y RWY 31

MCNARY FIELD (SLE)