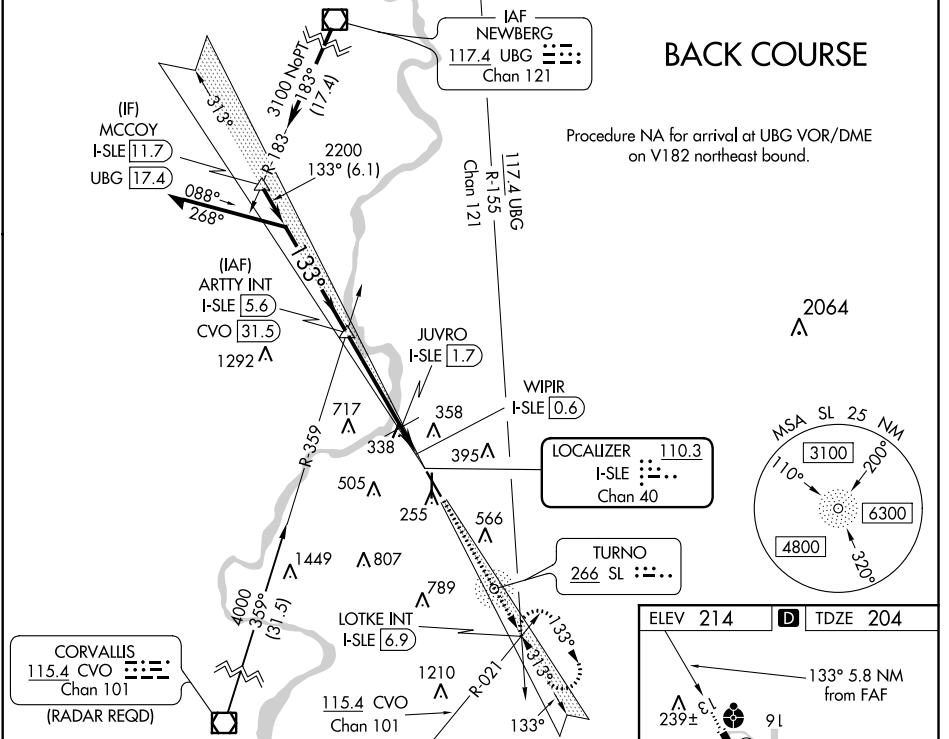


LOC/DME I-SLE <b>110.3</b> Chan 40	APP CRS <b>133°</b>	Rwy Idg TDZE Apt Elev <b>5811</b> <b>204</b> <b>214</b>
--	------------------------	--

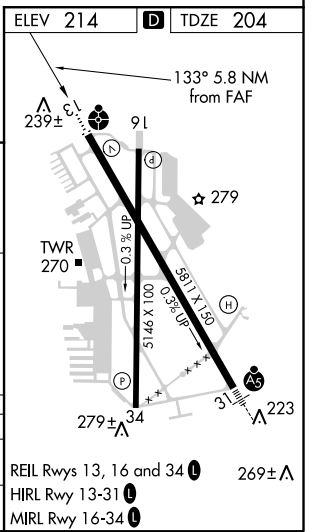
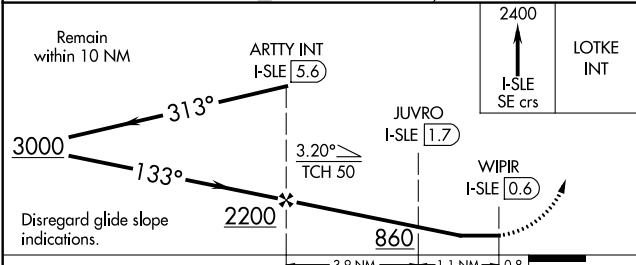
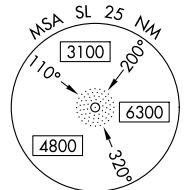
**LOC BC RWY 13**  
MCNARY FIELD (SLE)

DME required.			MISSED APPROACH: Climb to 2400 on I-SLE Localizer SE course to LOTKE INT/ I-SLE 6.9 DME and hold.
When local altimeter setting not received, use Mc Minnville altimeter setting: Increase all MDA 60 feet; increase S-13 Cat C/D visibility to 1½ SM and Circling Cat C visibility to 2½ SM. For inop ALS when using Mc Minnville altimeter setting, increase S-13 Cat D visibility to 1¾ SM. For inop ALS when using Mc Minnville altimeter setting, increase S-13 Cat D visibility to 1¾ SM. Rwy 13 helicopter visibility reduction below ¾ SM NA.			
ATIS <b>124.55</b>	SEATTLE CENTER <b>125.8 291.7</b>	SALEM TOWER ★ <b>119.1 (CTAF) 0 257.2</b>	GND CON <b>121.9</b>
			UNICOM <b>122.95</b>



**BACK COURSE**

Procedure NA for arrival at UBG VOR/DME on V182 northeast bound.



CATEGORY	A	B	C	D
S-13	600-¾ 396 (400-¾)		600-1 396 (400-1)	
CIRCLING	900-1 686 (700-1)	960-1 746 (800-1)	1060-2½ 846 (900-2½)	1260-3 1046 (1100-3)

NW-1, 10 SEP 2020 to 08 OCT 2020

NW-1, 10 SEP 2020 to 08 OCT 2020