

ILS or LOC Z RWY 31

MCNARY FIELD (SLE)

LOC/DME I-SLE 110.3 Chan 40	APP CRS 313°	Rwy Idg 5811 TDZE 214 Apt Elev 214
--	------------------------	---

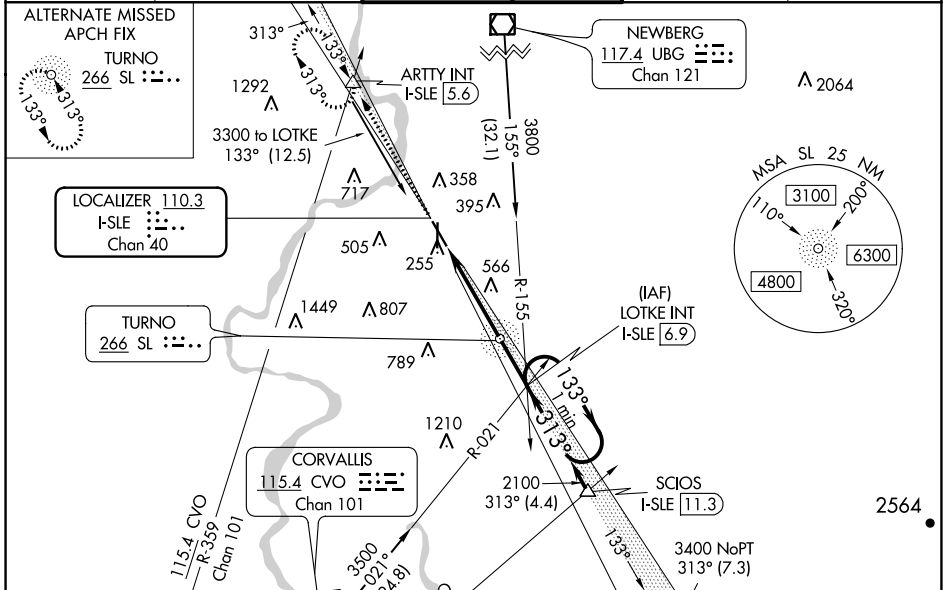
RADAR required for procedure entry at ARTTY.

When local altimeter setting not received, use Mc Minnville altimeter setting: increase DA to 463 feet, and all MDA 60 feet; increase S-LOC 31 Cats C/D visibility to 2 SM and Circling Cat A visibility to 1½ SM. VDP NA when using Mc Minnville altimeter setting. For inop ALS, increase S-LOC 31 Cat C/D visibility to 2½ SM. # RVR 1800 authorized with the use of FD or AP or HUD to DA, NA when using Mc Minnville altimeter setting.

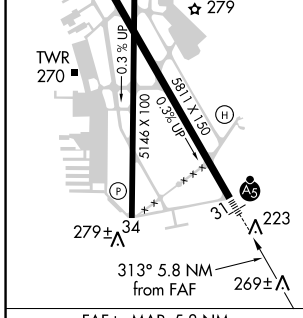
MALSR

MISSED APPROACH: Climb to 4000 on I-SLE Localizer NW course to ARTTY INT/I-SLE 5.6 DME and hold, continue climb-in-hold to 4000.

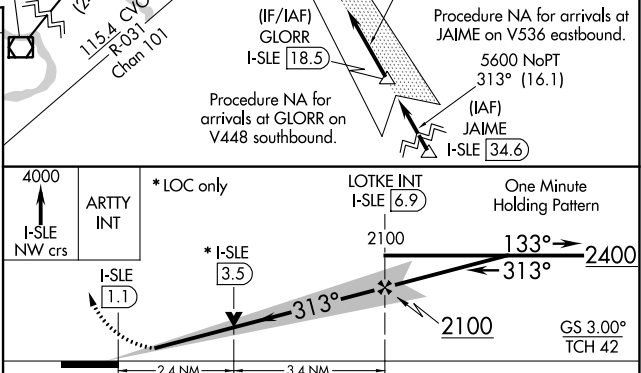
ATIS 124.55	SEATTLE CENTER 125.8 291.7	SALEM TOWER ★ 119.1(CTAF) 0 257.2	GND CON 121.9	UNICOM 122.95
-----------------------	--------------------------------------	---	-------------------------	-------------------------



ELEV 214	TDZE 214
REIL Rwy 13, 16 and 34	MIRL Rwy 16-34
HIRL Rwy 13-31	



FAF to MAP 5.8 NM
Knots: 60 90 120 150 180
Min:Sec: 5:48 3:52 2:54 2:19 1:56



CATEGORY	A	B	C	D
S-ILS 31 #	414/24 200 (200-½)			
S-LOC 31	1020/24 806 (900-½)	1020/40 806 (900-¾)	1020-1⅞ 806 (900-1⅞)	1260-3 1046 (1100-3)
CIRCLING	1020-1 806 (900-1)	1020-1¼ 806 (900-1¼)	1060-2½ 846 (900-2½)	1260-3 1046 (1100-3)

NW-1, 10 SEP 2020 to 08 OCT 2020

NW-1, 10 SEP 2020 to 08 OCT 2020