

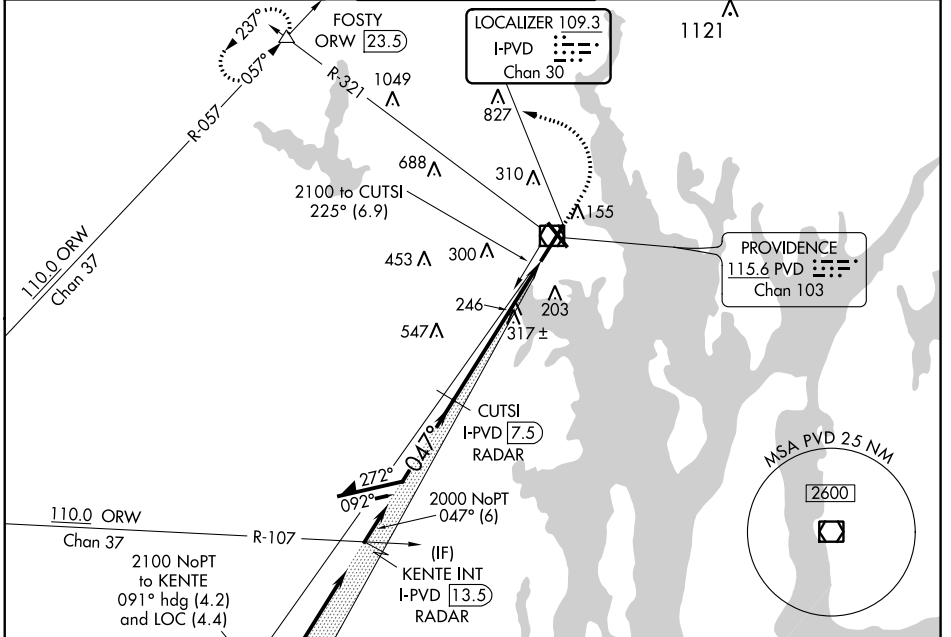
LOC/DME I-PVD <b>109.3</b> Chan 30	APP CRS <b>047°</b>	Rwy Idg <b>8700</b> TDZE <b>53</b> Apt Elev <b>54</b>
--	------------------------	---

# ILS RWY 5 (CAT II & III)

THEODORE FRANCIS GREEN STATE (PVD)

<p>Procedure NA when control tower closed.</p>	<p>ALSF-2</p>	<p>MISSED APPROACH: Climb to 800 then climbing left turn to 2500 on heading 270° and PVD VOR/DME R-321 to FOSTY INT/ORW 23.5 DME and hold.</p>
--	---------------	--

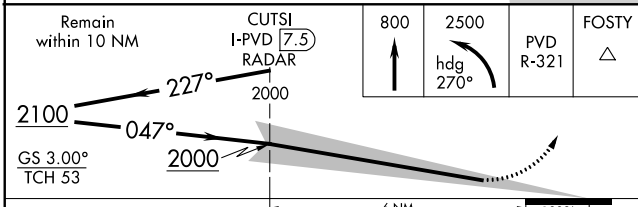
D-ATIS <b>124.2</b>	PROVIDENCE APP CON * <b>123.675 244.875</b>	PROVIDENCE TOWER * <b>120.7 (CTAF) 257.8</b>	GND CON <b>121.9 348.6</b>	CLNC DEL <b>126.65 348.6</b>
------------------------	--	---	-------------------------------	---------------------------------



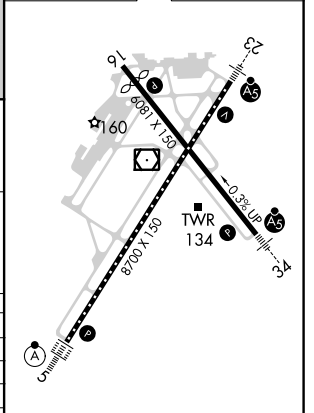
NE-1, 10 SEP 2020 to 08 OCT 2020

NE-1, 10 SEP 2020 to 08 OCT 2020

ELEV 54	TDZE 53
---------	---------



CATEGORY	A	B	C	D
S-ILS 5	CAT II RA 106/12 100 DA 153			
S-ILS 5	CAT IIIa RVR 700			
S-ILS 5	CAT IIIb RVR 600			
S-ILS 5	CAT IIIc NA			



REIL Rwy 5  
 TDZ/CL Rwy 5  
 REIL Rwy 16 and 23  
 HIRL Rwy 5-23 and 16-34

## CATEGORY II & III ILS - SPECIAL AIRCREW & AIRCRAFT CERTIFICATION REQUIRED