

LOC/DME I-EXO <b>109.35</b> Chan 30 (Y)	APP CRS <b>253°</b>	Rwy Idg TDZE <b>113</b> Apt Elev <b>113</b>	<b>6004</b> <b>113</b> <b>113</b>
---	------------------------	---	---

# ILS or LOC RWY 25

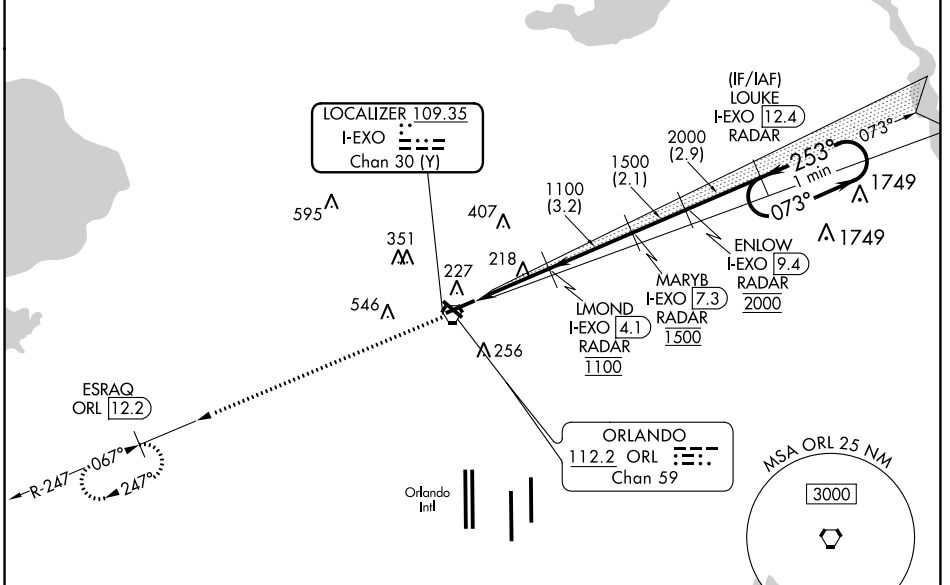
EXECUTIVE (ORL)

**⚠** Circling Rwy 31 NA at night. DME or RADAR Required. In minimum visibility conditions, bright lights on highway 1/2 mile south of airport may be mistaken for runway lights.

**⚠** MISSED APPROACH: Climb to 2000 on ORL VORTAC R-247 to ESRAQ/ORL VORTAC 12.2 DME and hold.

ATIS <b>127.25</b>	ORLANDO APP CON <b>124.8 351.9</b>	EXECUTIVE TOWER * <b>118.7 (CTAF) 239.0</b>	GND CON <b>121.4 239.0</b>	CLNC DEL <b>128.45</b>	UNICOM <b>122.95</b>
-----------------------	---------------------------------------	--	-------------------------------	---------------------------	-------------------------

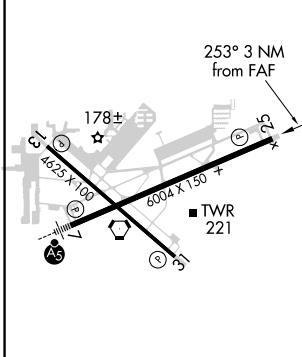
## RADAR REQUIRED



SE-3, 10 SEP 2020 to 08 OCT 2020

SE-3, 10 SEP 2020 to 08 OCT 2020

ELEV 113	<b>D</b>	TDZE 113
----------	----------	----------



REIL Rws 13, 25 and 31	<b>Ⓛ</b>
HIRL Rws 7-25 and 13-31	<b>Ⓛ</b>
FAF to MAP 3 NM	
Knots	60 90 120 150 180
Min:Sec	3:00 2:00 1:30 1:12 1:00

CATEGORY	A	B	C	D
S-ILS 25		313-3/4	200 (200-3/4)	
S-LOC 25		480-1	367 (400-1)	
<b>C</b> CIRCLING	580-1 467 (500-1)	680-1 567 (600-1)	860-2 1/4 747 (800-2/4)	860-2 1/2 747 (800-2/2)