

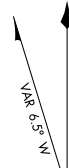
AIRPORT DIAGRAM

AL-305 (FAA)

EXECUTIVE (O.R.L.)
ORLANDO, FLORIDA

ATIS
 127.25
 EXECUTIVE TOWER*
 118.7 239.0
 GND CON
 121.4 239.0
 CLNC DEL
 128.45

D

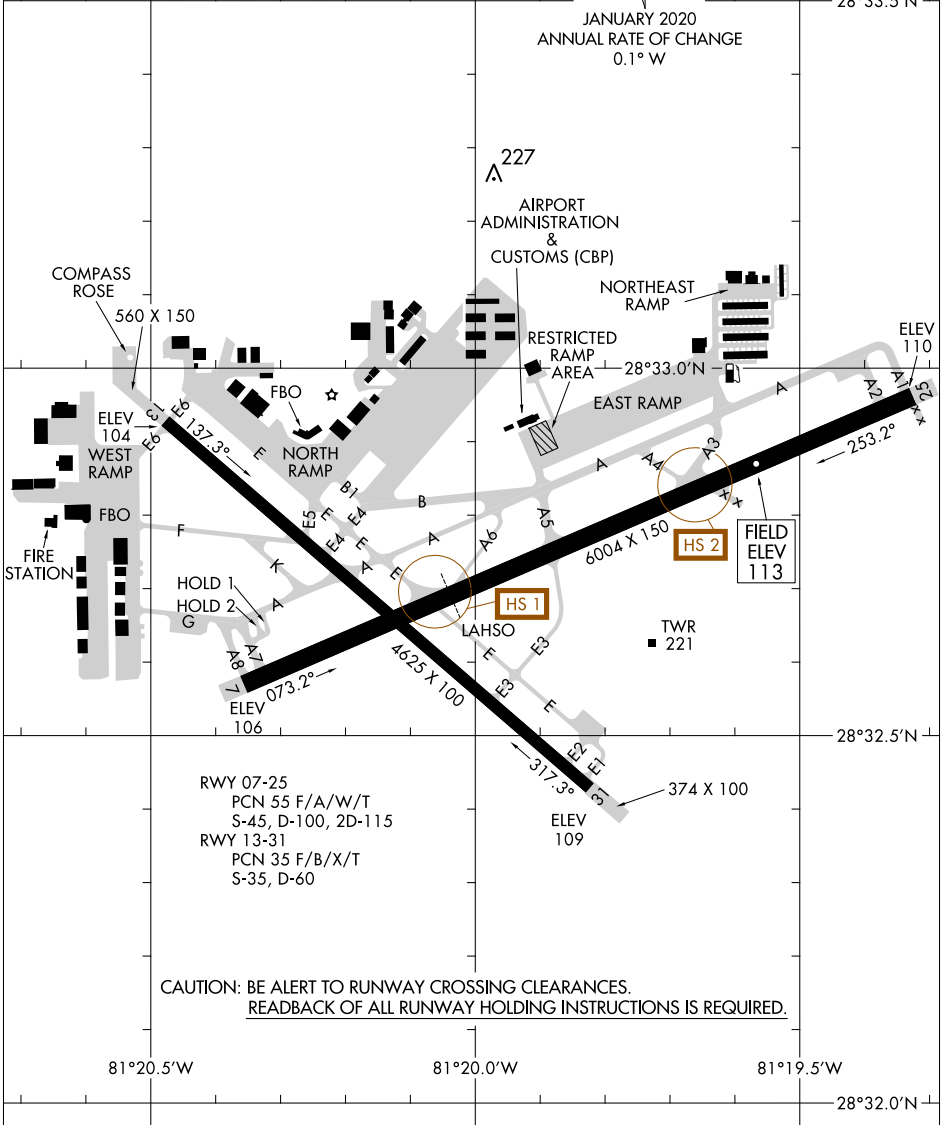


JANUARY 2020
 ANNUAL RATE OF CHANGE
 0.1° W

28°33.5'N

SE-3, 10 SEP 2020 to 08 OCT 2020

SE-3, 10 SEP 2020 to 08 OCT 2020



RWY 07-25
 PCN 55 F/A/W/T
 S-45, D-100, 2D-115
 RWY 13-31
 PCN 35 F/B/X/T
 S-35, D-60

CAUTION: BE ALERT TO RUNWAY CROSSING CLEARANCES.
 READBACK OF ALL RUNWAY HOLDING INSTRUCTIONS IS REQUIRED.

81°20.5'W

81°20.0'W

81°19.5'W

28°32.0'N

AIRPORT DIAGRAM

ORLANDO, FLORIDA
EXECUTIVE (O.R.L.)