

WAAS CH 62922 W27A	APP CRS 273°	Rwy Idg 8002 TDZE 8 Apt Elev 8
---------------------------------	------------------------	---

RNAV (GPS) RWY 27R

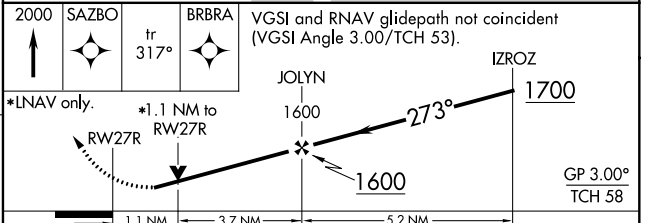
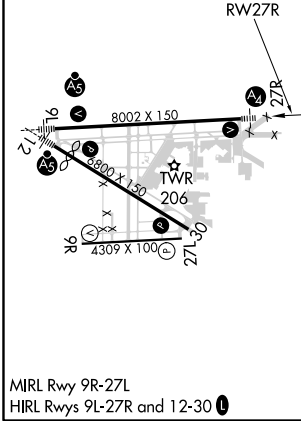
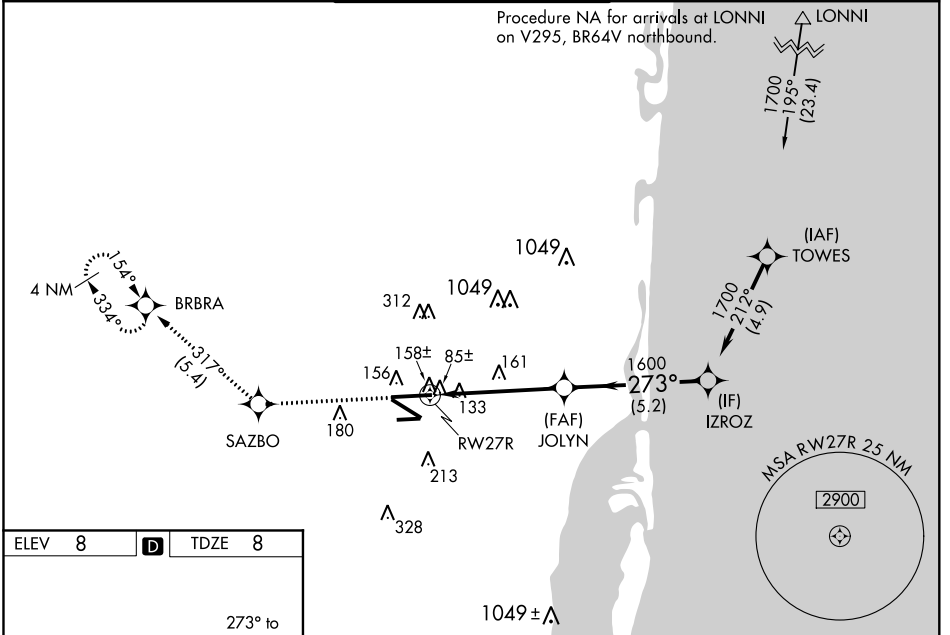
MIAMI-OPA LOCKA EXECUTIVE (OPF)

Baro-VNAV NA when using Miami Intl altimeter setting. For uncompensated Baro-VNAV systems, LNAV/VNAV NA below 5°C (41°F) or above 54°C (130°F). DME/DME RNP-0.3 NA. When local altimeter setting not received, use Miami Intl altimeter setting and increase all DA/MDA 20 feet. For inop MALS, increase LPV all Cats visibility to 7/8 mile, LNAV/VNAV all Cats to 1 3/8, and LNAV Cats C and D visibility to 1 1/8 mile. Helicopter visibility reduction below 3/4 SM NA.

MALS
A2

MISSED APPROACH: Climb to 2000 direct SAZBO and on track 317° to BRBRA and hold.

ATIS 125.9	MIAMI APP CON 128.6 306.975	OPA LOCKA TOWER ★ 134.675 (CTAF) 1	GND CON 120.025	CLNC DEL 119.2
----------------------	---------------------------------------	---	---------------------------	--------------------------



CATEGORY	A	B	C	D
LPV DA		291-3/4	283 (300-3/4)	
LNAV/VNAV DA		413-1	405 (500-1)	
LNAV MDA	420-3/4	412 (500-3/4)	420-1	412 (500-1)
CIRCLING	540-1	532 (600-1)	540-1 1/2 532 (600-1 1/2)	560-2 552 (600-2)

SE-3, 10 SEP 2020 to 08 OCT 2020

SE-3, 10 SEP 2020 to 08 OCT 2020