

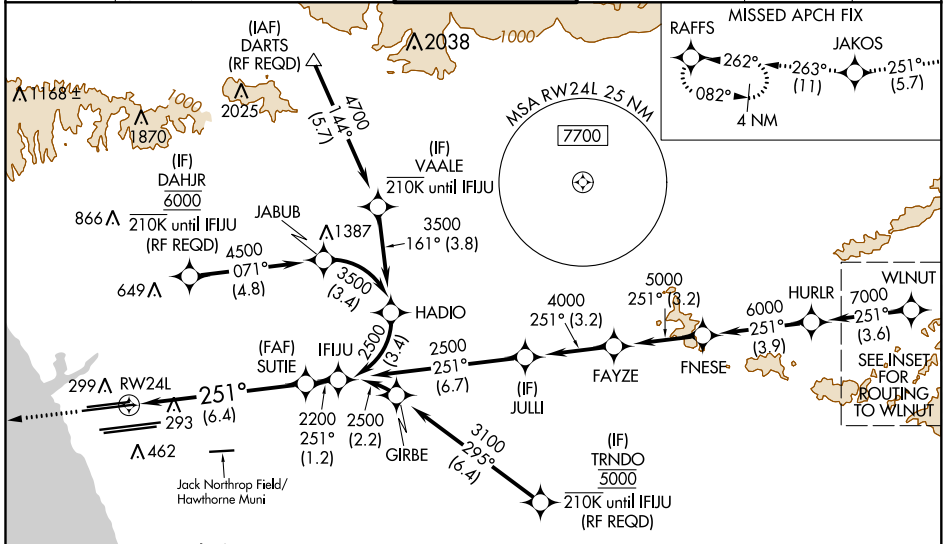
APP CRS	Rwy Idg	9483
251°	TDZE	123
	Apt Elev	128

RNAV (RNP) Z RWY 24L

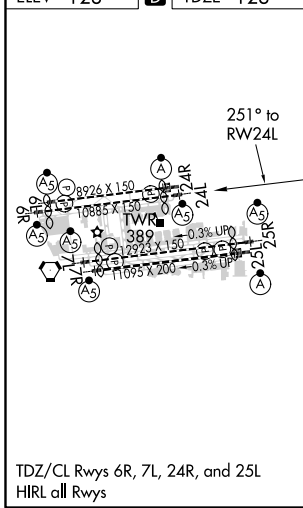
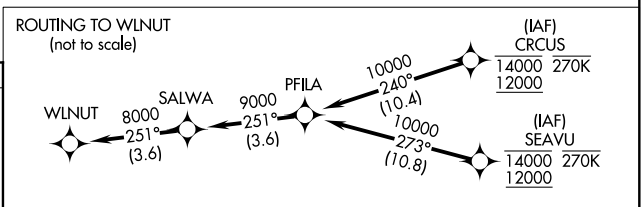
LOS ANGELES INTL (LAX)

<p>▼ For uncompensated Baro-VNAV systems, procedure NA below 5°C (41°F) or above 54°C (130°F). Simultaneous approach authorized. Simultaneous approach authorized with KHHR. GPS required. For inop ALS, increase RNP 0.15 all Cats visibility to 1½ SM.</p>	<p>MALSR</p>	<p>MISSED APPROACH: Climb to 2000 on track 251° to JAKOS and track 263° to RAFFS and hold.</p>
---	--------------	--

D-ATIS	SOCAL APP CON	LOS ANGELES TOWER	GND CON	CLNC DEL	CPDLC
ARR 133.8	124.3 363.2 (APCH FM WEST)	124.9 269.0 (090°-224°)	N 121.65 327.0 S 121.75 327.0 W 121.4 327.0	120.35 327.0	
DEP 135.65	124.5 235.975 (225°-044°)	128.5 360.7 (045°-089°)			



ELEV 128	D	TDZE 123
-----------------	----------	-----------------



2000	JAKOS	fr 263°	RAFFS	See planview for multiple IF locations.	IFJU
tr 251°					
<p>VGSI and RNAV glidepath not coincident (VGSI Angle 3.00/TCH 79).</p>					
<p>GP 3.00° TCH 59</p>					

CATEGORY	A	B	C	D
RNP 0.15 DA		545/50	422 (500-1)	
RNP 0.30 DA		592/60	469 (500-1½)	

AUTHORIZATION REQUIRED

SW-3, 10 SEP 2020 to 08 OCT 2020

SW-3, 10 SEP 2020 to 08 OCT 2020