

LOC/DME I-UWU 108.5 Chan 22	APP CRS 071°	Rwy Idg 6L 8566 6R 9748 TDZE 119 116 Apt Elev 128 128
---	------------------------	--

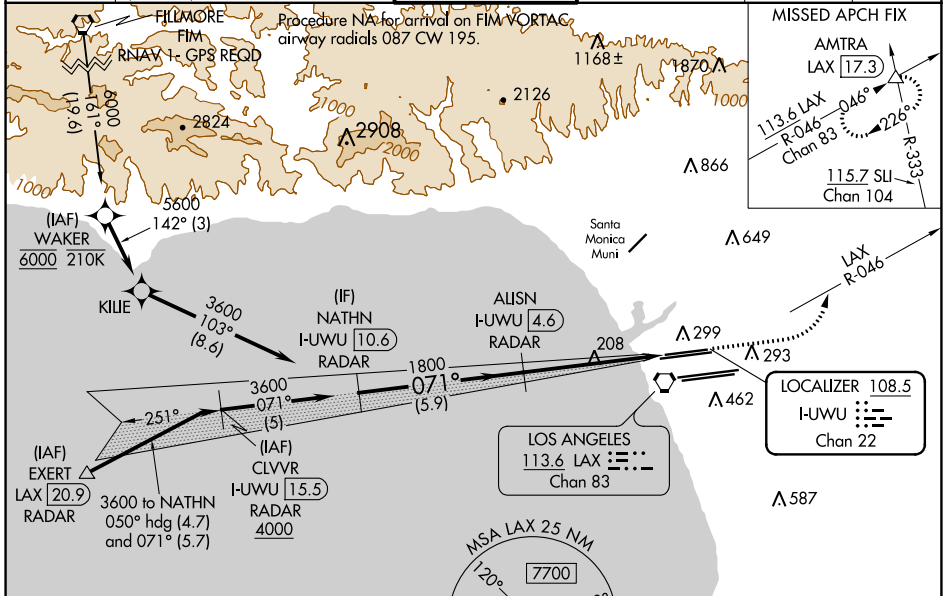
ILS or LOC RWY 6L

LOS ANGELES INTL (LAX)

▼ Inop table does not apply to Sidestep 6R Cats A/B. For inop ALS, increase S-LOC 6L Cat C/D visibility to RVR 5500. Simultaneous approach authorized.

MALSR Rwy 6L	MALSR Rwy 6R	MISSED APPROACH: Climb to 600 then climbing left turn to 3000 on LAX VORTAC R-046 to AMTRA INT/LAX 17.3 DME and hold.
--------------	--------------	---

D-ATIS ARR 133.8 DEP 135.65	SOCAL APP CON 124.3 363.2 124.9 269.0 (APCH FM WEST) (090°-224°) 124.5 235.975 128.5 360.7 (225°-044°) (045°-089°)	LOS ANGELES TOWER N 133.9 239.3 S 120.95 379.1	GND CON N 121.65 327.0 S 121.75 327.0 W 121.4 327.0	CLNC DEL 120.35 327.0	CPDLC
---	--	--	---	---	-------

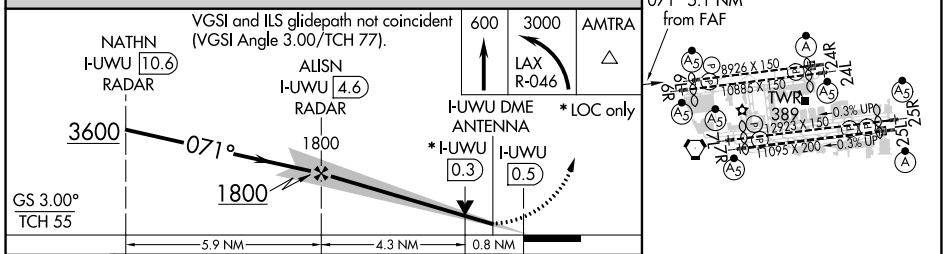


SW-3, 10 SEP 2020 to 08 OCT 2020

SW-3, 10 SEP 2020 to 08 OCT 2020

ELEV 128	TDZE 6L 119	TDZE 6R 116
----------	-------------	-------------

DME or RADAR REQUIRED



CATEGORY	A	B	C	D
S-ILS 6L	369/24 250 (300-½)			
S-LOC 6L	460/24 341 (400-½)	460/30 341 (400-¾)		
SIDESTEP 6R	460/55 344 (400-1)			460-1½ 344 (400-1½)

FAF to MAP 5.1 NM					
Knots	60	90	120	150	180
Min:Sec	5:06	3:24	2:33	2:02	1:42

TDZ/CL Rws 6R, 7L, 24R, and 25L
HIRL all Rws