

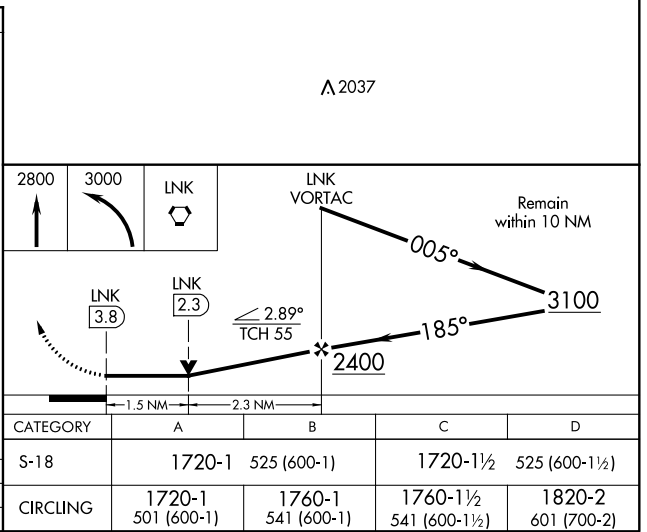
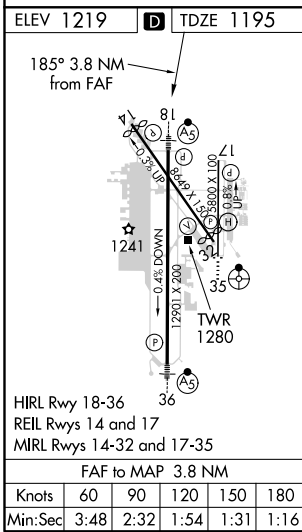
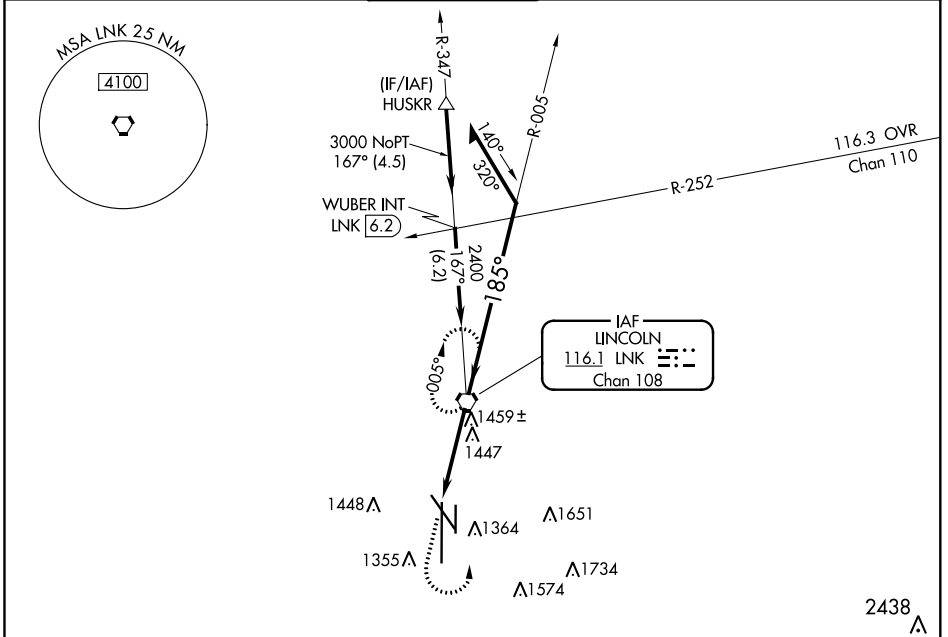
VORTAC LNK <b>116.1</b> Chan <b>108</b>	APP CRS <b>185°</b>	Rwy Idg <b>12901</b> TDZE <b>1195</b> Apt Elev <b>1219</b>
---	------------------------	--

# VOR RWY 18

LINCOLN (LNK)

	Inop table does not apply. VDP NA with Beatrice altimeter setting. When local altimeter setting not received, use Beatrice altimeter setting and increase all MDA 100 feet; increase S-18 and Circling Cat C/D visibilities 1/4 mile.	MALSR 	MISSED APPROACH: Climb to 2800 then climbing left turn to 3000 direct LNK VORTAC and hold.
--	---	-----------	--

ATIS <b>118.05 290.9</b>	OMAHA APP CON <b>124.0 270.3</b>	LINCOLN TOWER* <b>118.5(CTAF) 253.5</b>	GND CON <b>121.9 275.8</b>	CLNC DEL <b>120.7 225.4</b>	UNICOM <b>122.95</b>
-----------------------------	-------------------------------------	--	-------------------------------	--------------------------------	-------------------------



NC-2, 10 SEP 2020 to 08 OCT 2020

NC-2, 10 SEP 2020 to 08 OCT 2020