

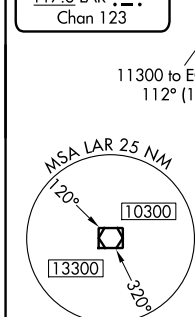
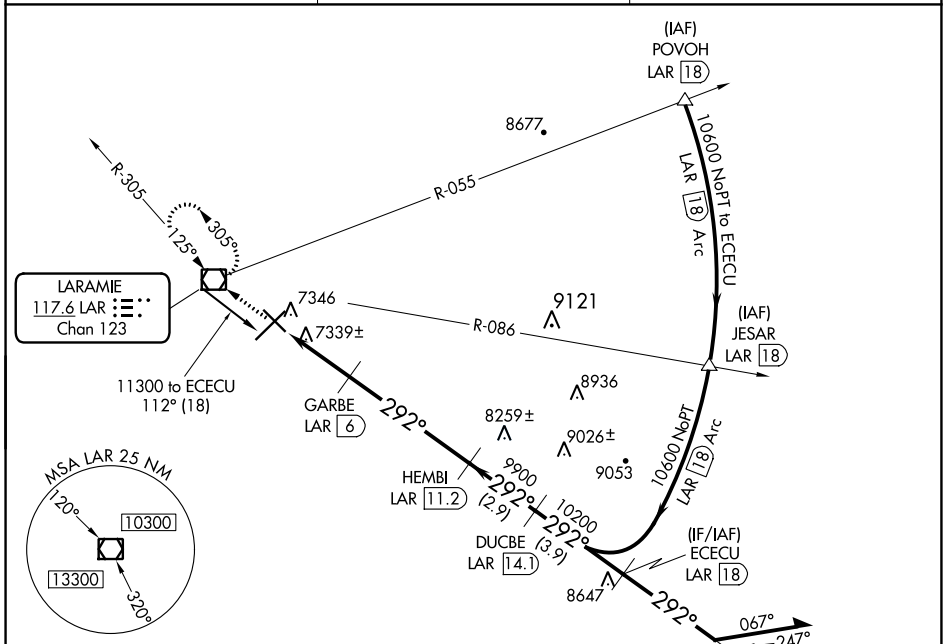
VOR/DME LAR 117.6 Chan 123	APP CRS 292°	Rwy Idg TDZE Apt Elev 6300 7278 7284
--	------------------------	--

VOR/DME RWY 30

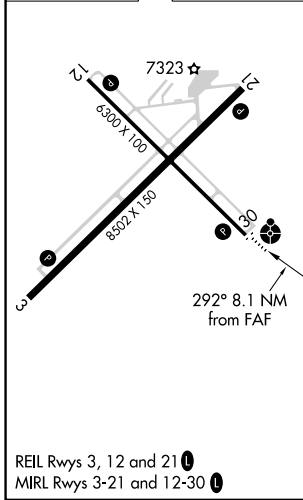
LARAMIE RGNL (L.A.R.)

-35°C	ODALS 	MISSED APPROACH: Climb to 9600 direct LAR VOR/DME and hold, continue climb-in-hold to 9600.
-------	-----------	---

ASOS 135.475	DENVER CENTER 125.9 284.7	UNICOM 123.05 (CTAF)
------------------------	-------------------------------------	--------------------------------



ELEV 7284	D	TDZE 7278
-----------	----------	-----------



9600	LAR	ECECU LAR 18	Remain within 10 NM
8220	LAR 3.1	GARBE LAR 6	HEMBI LAR 11.2
9900	LAR 4	DUCBE LAR 14.1	ECECU LAR 18
10200	LAR 3.1	LAR 4	LAR 6
10600	LAR 3.1	LAR 6	LAR 11.2
0.9	2 NM	5.2 NM	2.9 NM
3.9 NM			
CATEGORY	A	B	C
S-30	7600-¾ 322 (400-¾)		7600-1 322 (400-1)
CIRCLING	7660-1 376 (400-1)	7740-1 456 (500-1)	7740-1½ 456 (500-1½)
			7840-2 556 (600-2)

NW-1, 10 SEP 2020 to 08 OCT 2020

NW-1, 10 SEP 2020 to 08 OCT 2020