

(ROCKY1.ROCKY) 18032
ROCKY ONE DEPARTURE

AL-203 (FAA)

INDIANAPOLIS INTL (IND)
 INDIANAPOLIS, INDIANA

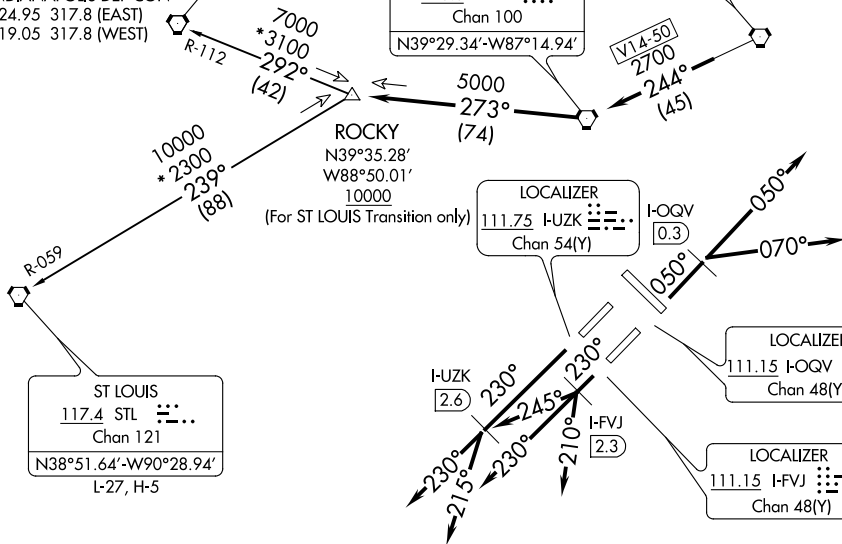
D-ATIS
 134.25
 CLNC DEL
 128.75 257.8
 CPDLC
 GND CON
 121.9
 INDY TOWER
 120.9 257.8
 INDIANAPOLIS DEP CON
 124.95 317.8 (EAST)
 119.05 317.8 (WEST)

SPINNER
 112.7 SPI
 Chan 74
 N39°50.38'-W89°40.66'
 L-27, H-5

TERRE HAUTE
 115.3 TTH
 Chan 100
 N39°29.34'-W87°14.94'

BRICKYARD
 116.3 VHP
 Chan 110

TOP ALTITUDE:
(JETS) 5000
(PROPS) 3000



TAKEOFF MINIMUMS

Rwys 5L/R, 14, 23L/R, 32: Standard.

NOTE: RADAR required.

NOTE: Select appropriate localizer/DME frequency/channel prior to departure.

NOTE: Turbojets accelerate to 250K until reaching 10000, if unable advise ATC.

NOTE: Assigned to aircraft with a requested altitude of 11000 or above.

(NARRATIVE ON FOLLOWING PAGE)

NOTE: Chart not to scale.

(ROCKY1.ROCKY) 01FEB18

INDIANAPOLIS, INDIANA
 INDIANAPOLIS INTL (IND)

EC-2, 10 SEP 2020 to 08 OCT 2020

EC-2, 10 SEP 2020 to 08 OCT 2020

