

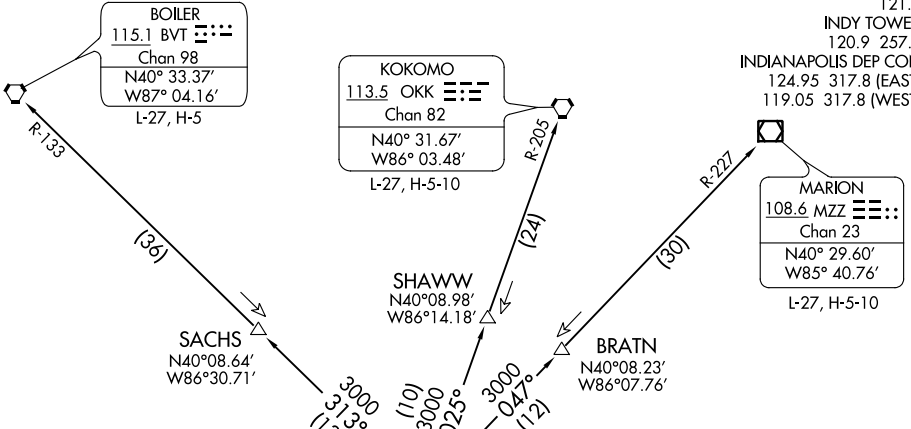
(MEARZ6.MEARZ) 20086
MEARZ SIX DEPARTURE

AL-203 (FAA)

INDIANAPOLIS INTL (IND)
 INDIANAPOLIS, INDIANA

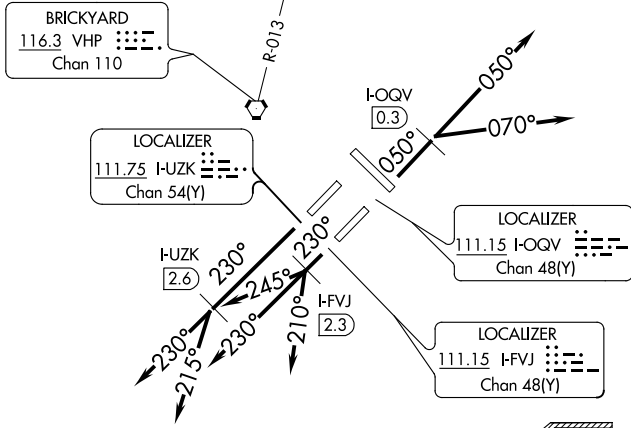
TOP ALTITUDE:
(JETS) 5000
(PROPS) 3000

D-ATIS 134.25
 CLNC DEL
 128.75 257.8
 CPDLC
 GND CON
 121.9
 INDY TOWER
 120.9 257.8
 INDIANAPOLIS DEP CON
 124.95 317.8 (EAST)
 119.05 317.8 (WEST)

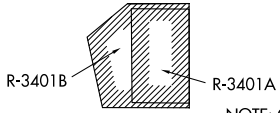


TAKEOFF MINIMUMS
 Rwy 5L/R, 14, 23L/R, 32: Standard.

- NOTE: RADAR required.
- NOTE: Select appropriate localizer/DME frequency/channel prior to departure.
- NOTE: Turbojets accelerate to 250K until reaching 10000, if unable advise ATC.
- NOTE: Assigned to aircraft with a requested altitude of 11000 or above.



(NARRATIVE ON FOLLOWING PAGE)



NOTE: Chart not to scale.

EC-2, 10 SEP 2020 to 08 OCT 2020

EC-2, 10 SEP 2020 to 08 OCT 2020

MEARZ SIX DEPARTURE
 (MEARZ6.MEARZ) 01FEB18

INDIANAPOLIS, INDIANA
 INDIANAPOLIS INTL (IND)