

# BLUBELL FOUR ARRIVAL

HOUSTON, TEXAS

SC-5, 10 SEP 2020 to 08 OCT 2020

**ARRIVAL ROUTE DESCRIPTION**

**COLLEGE STATION TRANSITION (CLL.BLUBL4):**  
From over CLL VORTAC on CLL R-153 to BLUBL. Thence . . . . .

**ELIVR TRANSITION (ELIVR.BLUBL4):** From over ELIVR on CLL R-334 to CLL VORTAC, then on CLL R-153 to BLUBL. Thence . . . . .

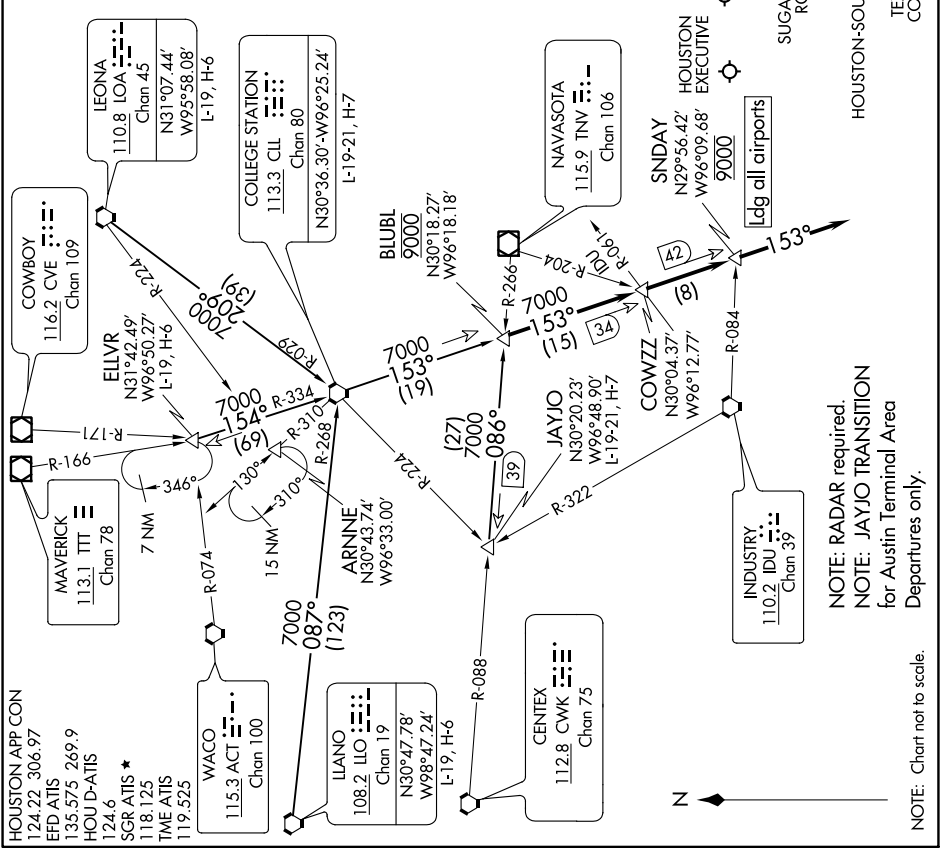
**JAYJO TRANSITION (JAYJO.BLUBL4):** From over JAYJO on TNV R-266 to BLUBL. Thence . . . . .

**LEONA TRANSITION (LOA.BLUBL4):** From over LOA VORTAC on LOA R-209 and CLL R-029 to CLL VORTAC, then on CLL R-153 to BLUBL. Thence . . . . .

**ILANO TRANSITION (ILO.BLUBL4):** From over ILO VORTAC on ILO R-087 and CLL R-268 to CLL VORTAC, then on CLL R-153 to BLUBL. Thence . . . . .

. . . . . From over BLUBL on CLL R-153 to cross SUNDAY at 9000, from SUNDAY fly heading 153°. Expect vectors to final approach course at or prior to SUNDAY.

CHAMBERS COUNTY  
BAYTOWN  
LA PORTE MUNI  
WILLIAM P HOBBY  
SUGAR LAND RGNL  
HOUSTON-SOUTHWEST  
TEXAS GULF COAST RGNL  
PEARLAND RGNL  
SCHOLIES INTL AT GALVESTON  
RWJ AIRPARK  
ELLINGTON



SC-5, 10 SEP 2020 to 08 OCT 2020

# BLUBELL FOUR ARRIVAL

HOUSTON, TEXAS