

LOC I-GMU 109.7	APP CRS 006°	Rwy Idg 5393 TDZE 1015 Apt Elev 1048
---------------------------	------------------------	---

ILS Z or LOC Z RWY 1

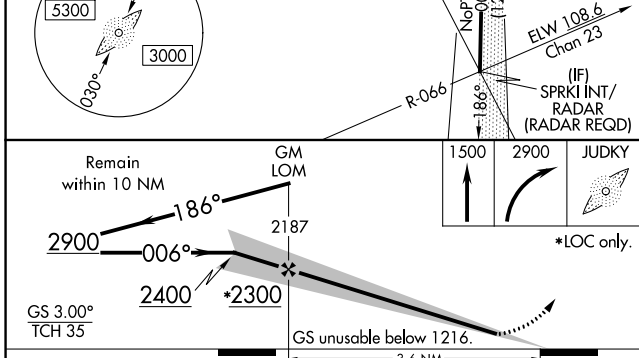
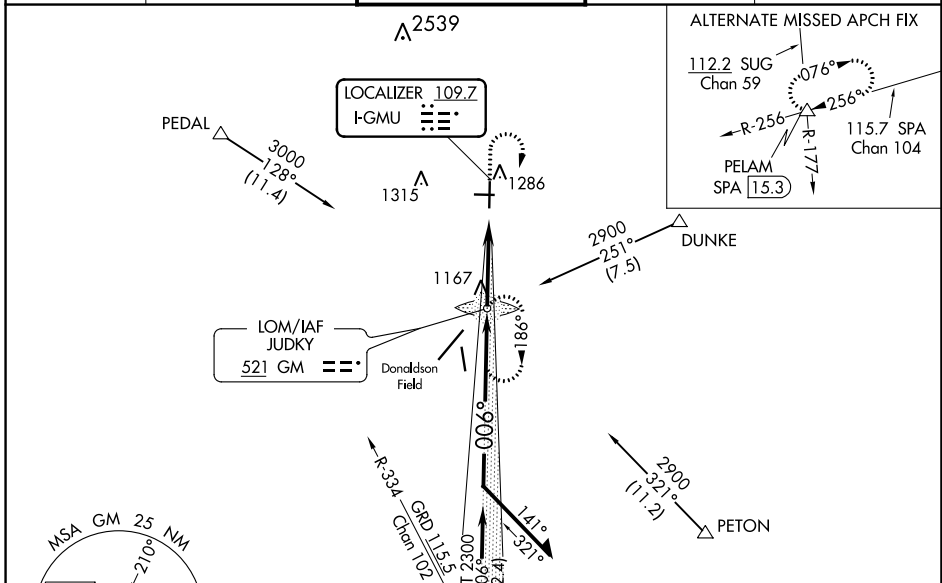
GREENVILLE DOWNTOWN (GMU)

ADF required.

ASR When local altimeter setting not received, use Greer altimeter setting and increase DA to 1245, increase all MDAs 40 feet and visibility S-LOC 1 Cat C and D 1/8 SM and Circling Cat C visibility 1/4 SM. Inop table does not apply to S-LS 1.

MALSF MISSED APPROACH: Climb to 1500 then climbing right turn to 2900 direct JUDKY LOM and hold, continue climb-in-hold to 2900.

ATIS ★ 127.075	GREER APP CON★ 118.8 270.275	GREENVILLE TOWER★ 119.9 (CTAF) 257.7	GND CON 121.25	UNICOM 122.95
--------------------------	--	--	--------------------------	-------------------------



ELEV 1048	D	TDZE 1015
-----------	----------	-----------

REIL Rwy 28
REIL Rwy 19
MIRL Rwy 10-28
HIRL Rwy 1-19

006° 3.6 NM from FAF

Knots	60	90	120	150	180
Min:Seq	3:36	2:24	1:48	1:26	1:12

CATEGORY	A	B	C	D
S-ILS 1	1216-3/4		201 (200-3/4)	
S-LOC 1	1540-3/4	525 (500-3/4)	1540-1/4	525 (500-1/4)
C CIRCLING	1620-1	572 (600-1)	1780-2 732 (800-2)	1860-2 3/4 812 (900-2 3/4)

SE-2, 10 SEP 2020 to 08 OCT 2020

SE-2, 10 SEP 2020 to 08 OCT 2020