

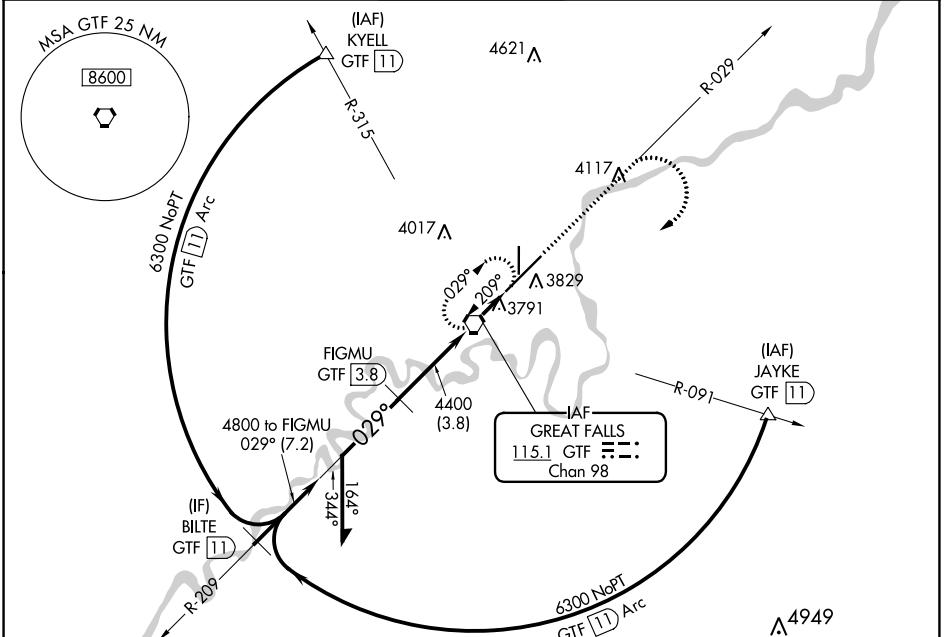
VORTAC GTF 115.1 Chan 98	APP CRS 029°	Rwy Idg 10502 TDZE 3680 Apt Elev 3680
--	------------------------	--

VOR/DME RWY 3

GREAT FALLS INTL (GTF)

▽ For inoperative ALSF-2, increase S-3 Cat D visibility to RVR 6000.	ALSF-2 	MISSED APPROACH: Climb to 5000 via GTF VORTAC R-029 then climbing right turn to 6300 direct GTF VORTAC and hold, continue climb-in-hold to 6300.
---	------------	--

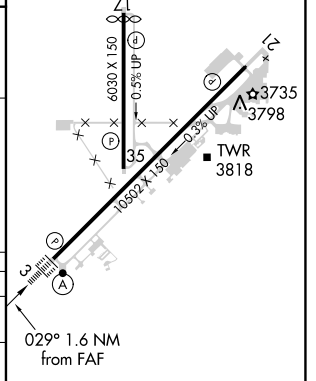
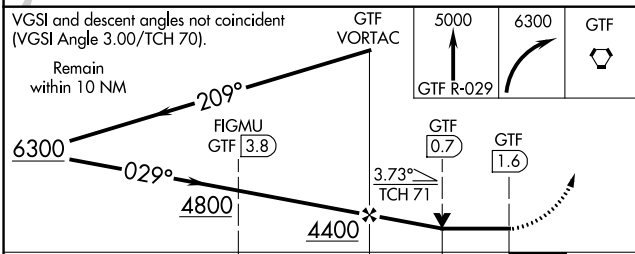
ATIS 126.6 269.0	GREAT FALLS APP CON 128.6 379.175	GREAT FALLS TOWER 118.7 282.2	GND CON 121.7 348.6	CLNC DEL 121.7 348.6
----------------------------	---	---	-------------------------------	--------------------------------



NW-1, 10 SEP 2020 to 08 OCT 2020

NW-1, 10 SEP 2020 to 08 OCT 2020

ELEV 3680	D TDZE 3680
TDZ/CL Rwy 3	
REIL Rwy 21	
MIRL Rwy 17-35	
HIRL Rwy 3-21	



CATEGORY	A	B	C	D
S-3	4060/24 380 (400-½)		NA	
C CIRCLING	4180-1	500 (500-1)	4320-1¾ 640 (700-1¾)	4420-2¼ 740 (800-2¼)