

RNAV (RNP) Z RWY 21

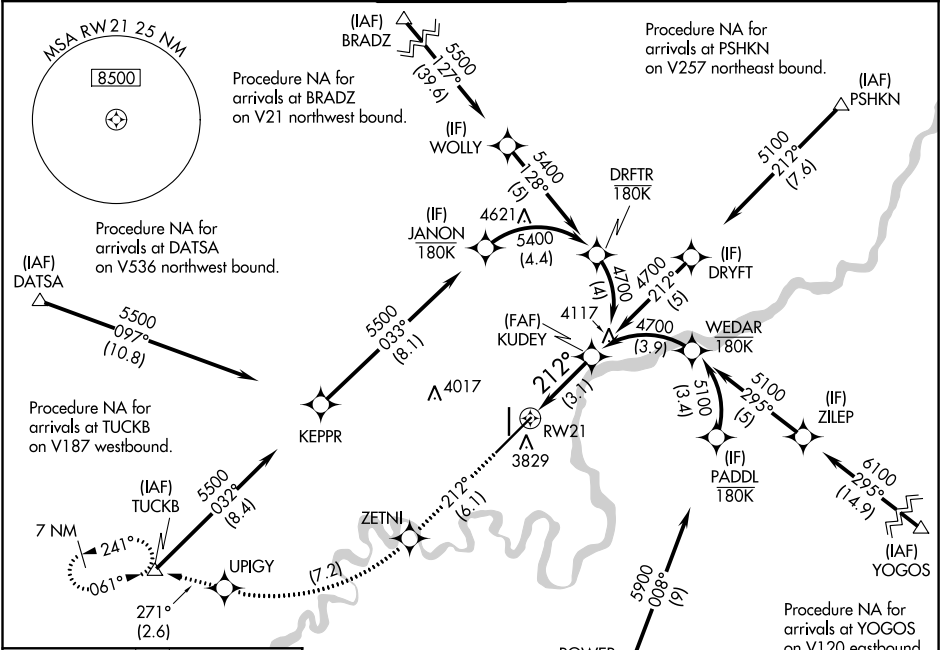
GREAT FALLS INTL (GTF)

| | | |
|-------------|----------|--------------|
| APP CRS | Rwy Idg | 10502 |
| 212° | TDZE | 3669 |
| | Apt Elev | 3680 |

RF required. GPS required. For uncompensated Baro-VNAV systems, procedure NA below -24°C (-11°F) or above 49°C (121°F).

MISSED APPROACH: Climb to 8000 on track 212° to ZETNI, right turn to UPIGY and on track 271° to TUCKB and hold, continue climb-in-hold to 8000.

| | | | | |
|----------------------------|---|---|-------------------------------|--------------------------------|
| ATIS 126.6 269.0 | GREAT FALLS APP CON 128.6 379.175 | GREAT FALLS TOWER 118.7 282.2 | GND CON 121.7 348.6 | CLNC DEL 121.7 348.6 |
|----------------------------|---|---|-------------------------------|--------------------------------|



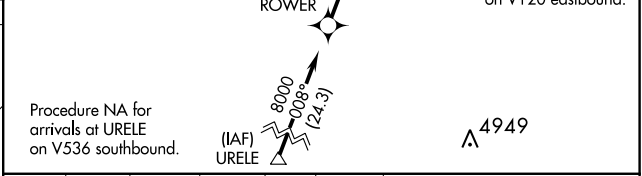
NW-1, 10 SEP 2020 to 08 OCT 2020

NW-1, 10 SEP 2020 to 08 OCT 2020

| | | |
|-----------|----------|-----------|
| ELEV 3680 | D | TDZE 3669 |
|-----------|----------|-----------|

Procedure NA for arrivals at URELE on V536 southbound.

TDZ/CL Rwy 3
REIL Rwy 21
HIRL Rwy 3-21
MIRL Rwy 17-35



| | | | | |
|---------|-------|-------|-------|-------|
| 8000 | ZETNI | UPIGY | TUCKB | KUDEY |
| tr 212° | ✧ | ✧ | △ | 4700 |

VGSI and RNAV glidepath not coincident (VGSI Angle 3.00/TCH 75).

See planview for multiple IF locations.

GP 3.00°
TCH 59

| | | | | |
|-------------|---|---------|-------------|---|
| CATEGORY | A | B | C | D |
| RNP 0.10 DA | | 3942/45 | 273 (300-%) | |
| RNP 0.30 DA | | 3992/50 | 323 (400-1) | |

AUTHORIZATION REQUIRED