

WAAS CH 82240 W35A	APP CRS 347°	Rwy Idg TDZE Apt Elev	5400 3668 3680
--	------------------------	-----------------------------	---

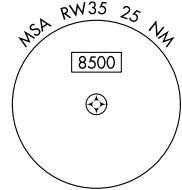
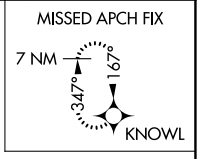
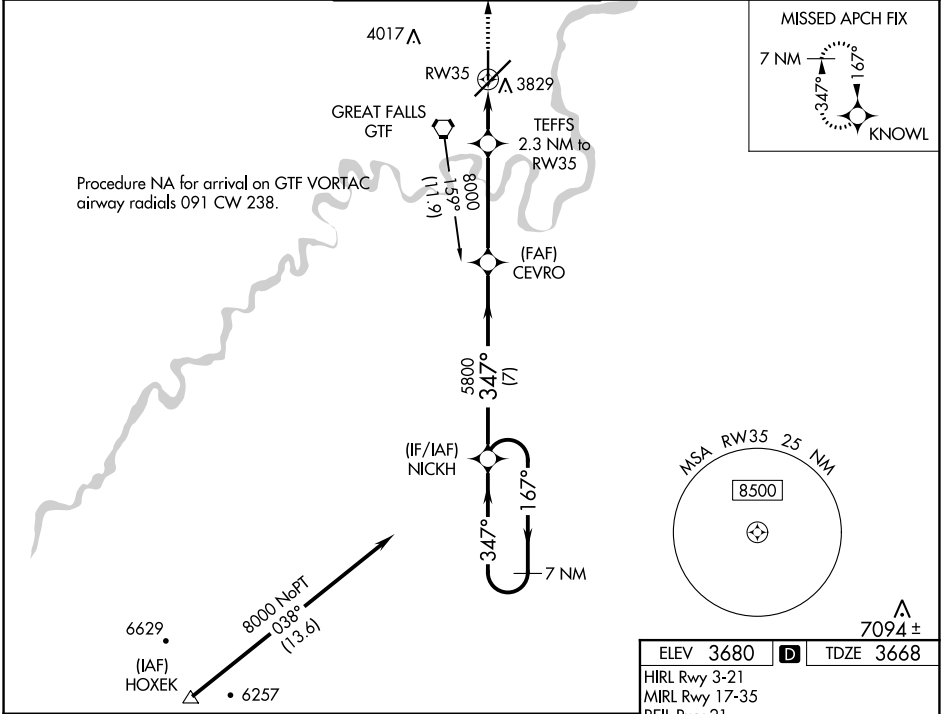
RNAV (GPS) RWY 35

GREAT FALLS INTL (GTF)

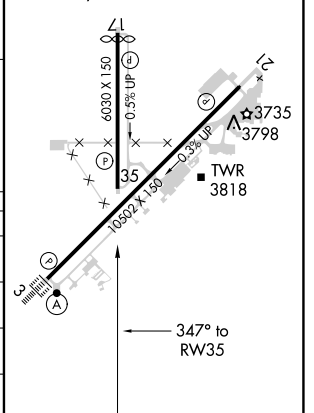
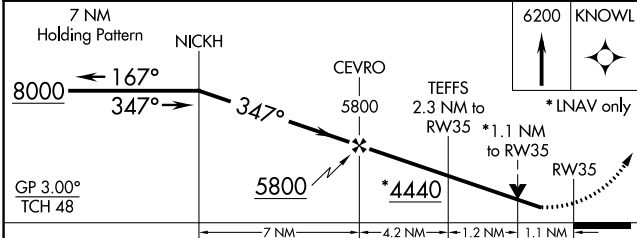
⚠ For uncompensated Baro-VNAV systems, LNAV/VNAV NA below -26°C (-14°F) or above 52°C (126°F).
⚠ DME/DME RNP-0.3 NA.
⚠ -33°C Rwy 35 helicopter visibility reduction below ¾ SM NA.

MISSED APPROACH: Climb to 6200 direct KNOWL and hold.

ATIS 126.6 269.0	GREAT FALLS APP CON 128.6 379.175	GREAT FALLS TOWER 118.7 282.2	GND CON 121.7 348.6	CLNC DEL 121.7 348.6
----------------------------	---	---	-------------------------------	--------------------------------



ELEV 3680	D	TDZE 3668
HIRL Rwy 3-21 MIRL Rwy 17-35 REIL Rwy 21 TDZ/CL Rwy 3		



CATEGORY	A	B	C	D
LPV DA		3918-¾	250 (300-¾)	
LNAV/VNAV DA		4086-1⅜	418 (500-1⅜)	
LNAV MDA	4080-¾ 412 (500-¾)	4080-1 412 (500-1)	4080-1⅜ 412 (500-1⅜)	412 (500-1⅜)
C CIRCLING	4120-1 440 (500-1)	4140-1 460 (500-1)	4320-1¾ 640 (700-1¾)	4420-2¼ 740 (800-2¼)

NW-1, 10 SEP 2020 to 08 OCT 2020

NW-1, 10 SEP 2020 to 08 OCT 2020