


| | | |
|--|------------------------|--|
| WAAS CH 42804 W28A | APP CRS 273° | Rwy Idg 13000 TDZE 651 Apt Elev 680 |
|--|------------------------|--|

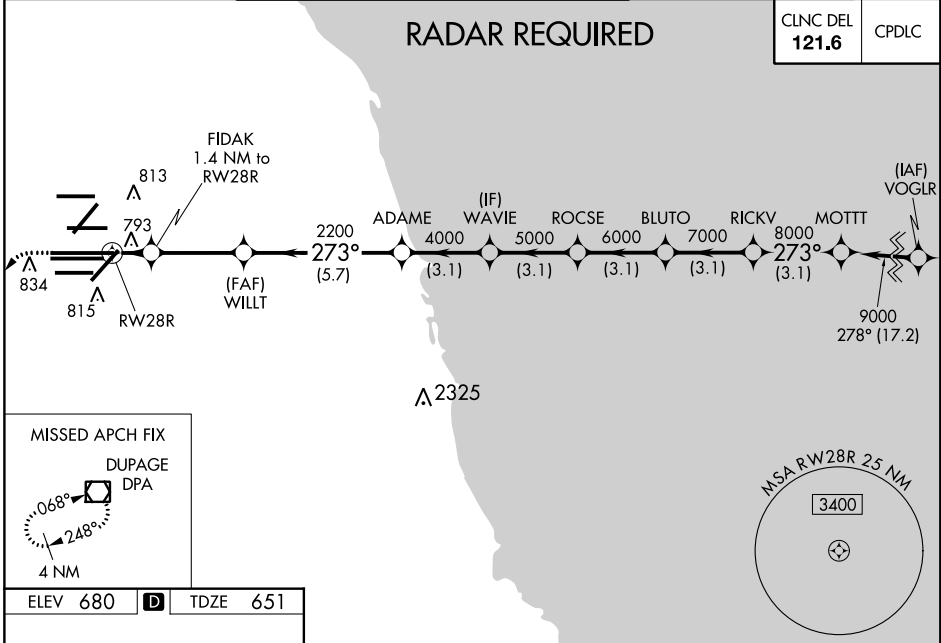
RNAV (GPS) RWY 28R

CHICAGO O'HARE INTL (ORD)

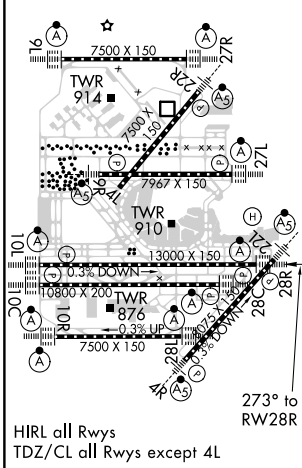
▼ For uncompensated Baro-VNAV systems, LNAV/VNAV NA below -19°C (-2°F) or above 54°C (130°F). Simultaneous approach authorized. DME/DME RNP-0.3 NA. For inop ALSF-2, increase LNAV/VNAV all Cats visibility to 1½ mile and LNAV Cats C/D visibility to RVR 6000. LNAV procedure NA during simultaneous operations. Use of FD or AP providing RNAV track guidance required during simultaneous operations.

ALSF-2

 MISSED APPROACH: Climb to 1200 then climbing left turn to 4000 direct DPA VOR/DME and hold.

| | | | |
|--|---|--|---|
| D-ATIS 135.4 282.225 | CHICAGO APP CON 119.0 292.125 | O'HARE TOWERS 128.15 348.0 (Rwy 9L/27R) 133.0 348.0 (10R/28L) 120.75 121.15 126.9 132.7 348.0 (CENTER) | GND CON (TWR CENTER) 124.125 (TWR NORTH) 121.75 (OBND) 118.05 (TWR SOUTH) 121.9 (IBND) 226.675 (ALL TWRs) |
|--|---|--|---|



| | | |
|-----------------|----------|-----------------|
| ELEV 680 | D | TDZE 651 |
|-----------------|----------|-----------------|



| | | | |
|--------------|---------|-------------|---|
| 1200 | 4000 | DPA | VGSI and RNAV glidepath not coincident (VGSI Angle 3.00°/TCH 70). |
| *LNAV only. | | | |
| | | | |
| CATEGORY | A | B | C |
| LPV DA | 851/18 | | 200 (200-½) |
| LNAV/VNAV DA | 1041/45 | | 390 (400-¾) |
| LNAV MDA | 1060/24 | 409 (400-½) | 1060/40 409 (400-¾) |

EC-3, 10 SEP 2020 to 08 OCT 2020

EC-3, 10 SEP 2020 to 08 OCT 2020