

WAAS CH 90504 W22A	APP CRS 223°	Rwy Idg 7375 TDZE 652 Apt Elev 680
--	------------------------	---

RNAV (GPS) RWY 22R

CHICAGO O'HARE INTL (ORD)

⚠ For uncompensated Baro-VNAV systems, LNAV/VNAV NA below -22°C (-7°F) or above 39°C (102°F). Simultaneous approach authorized with Rwy 22L. DME/DME RNP-0.3 NA. LNAV procedure NA during simultaneous operations. Use of FD or AP providing RNAV track guidance required during simultaneous operations.

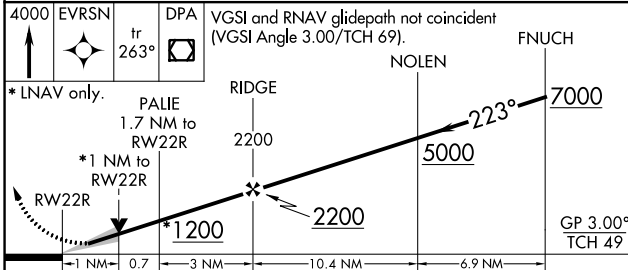
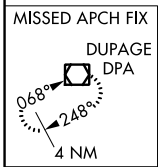
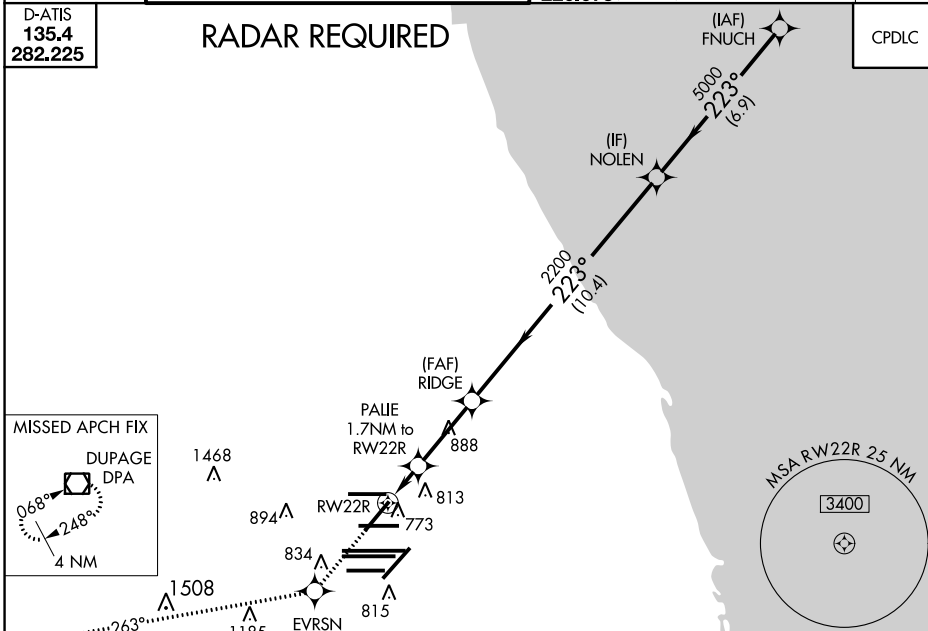


MISSED APPROACH: Climb to 4000 direct EVRSN and on track 263° to DPA VOR/DME and hold.

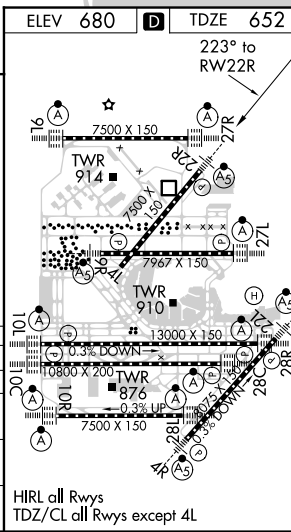
CHICAGO APP CON 119.0 292.125	O'HARE TOWERS 128.15 348.0 (Rwy 9L/27R) 133.0 348.0 (10R/28L) 120.75 121.15 126.9 132.7 348.0 (CENTER)	GND CON 124.125 (TWR NORTH) 118.05 (TWR SOUTH) 226.675 (ALL TWRs)	(TWR CENTER) 121.75 (OBND) 121.9 (IBND)	CLNC DEL 121.6
---	--	---	--	--------------------------

D-ATIS 135.4 282.225
--

RADAR REQUIRED



CATEGORY	A	B	C	D
LPV DA		852/18	200 (200-½)	
LNAV/VNAV DA		972/32	320 (300-¾)	
LNAV MDA	1040/24	388 (400-½)	1040/35	388 (400-¾)
C CIRCLING	1220-1	540 (600-1)	1220-1½	1460-2½
			540 (600-1½)	780 (800-2½)



EC-3, 10 SEP 2020 to 08 OCT 2020

EC-3, 10 SEP 2020 to 08 OCT 2020