

LOC/DME I-SXH <b>108.95</b> Chan 26(Y)	APP CRS <b>093°</b>	Rwy Ldg TDZE <b>669</b> Apt Elev <b>680</b>	<b>10540</b>
--	------------------------	---	--------------

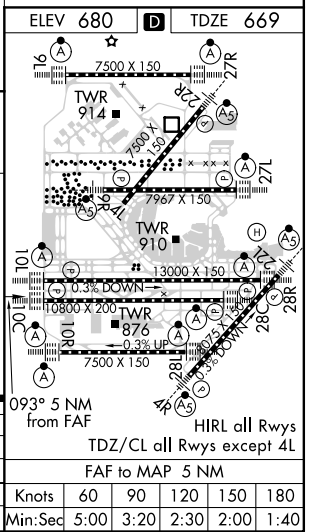
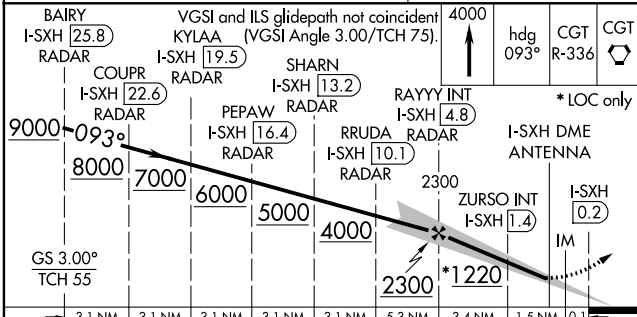
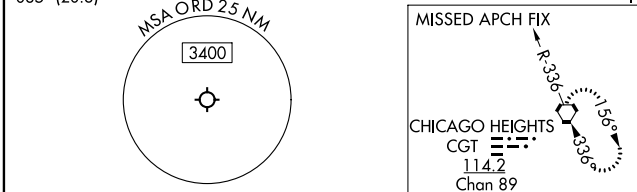
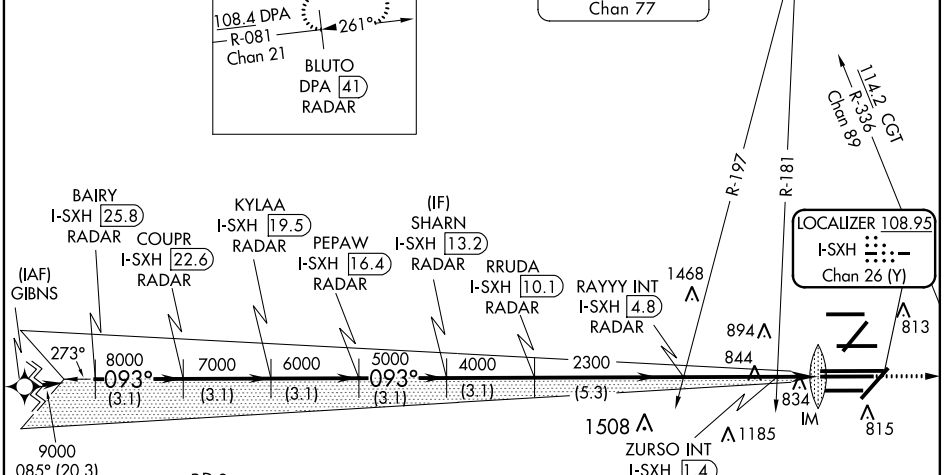
# ILS or LOC RWY 10C

CHICAGO O'HARE INTL (ORD)

From GIBNS: RNAV-1 GPS required. ALSIF-2   
 RNAV 1-GPS or RADAR required for procedure entry. DME or RADAR required. MISSED APPROACH: Climb to 4000 on heading 093° and CGT VORTAC R-336 to CGT VORTAC and hold.  
 Simultaneous approach authorized.

CHICAGO APP CON <b>119.0 292.125</b>	O'HARE TOWERS Rwy 9L/27R <b>128.15 348.0</b> (110R/28L) 120.75 <b>121.15 126.9 132.7 348.0</b> (CENTER)	GND CON (TWR NORTH) <b>124.125</b> (TWR SOUTH) <b>118.05</b> (ALL TWRs) <b>226.675</b>	(TWR CENTER) (OBND) <b>121.75</b> (IBND) <b>121.9</b>	CLNC DEL <b>121.6</b>
---	---	---	---	--------------------------

D-ATIS <b>135.4</b> <b>282.225</b>	ALTERNATE MISSED APCH FIX	NORTHBROOK 113.0 OBK Chan 77	CPDLC
--	---------------------------	------------------------------------	-------



CATEGORY	A	B	C	D	
S-ILS 10C	869/18 200 (200-½)				
S-LOC 10C	1220/24	551 (600-½)	1220/60	551 (600-¼)	
ZURSO FIX MINIMUMS (DUAL VOR RECEIVERS OR DME REQUIRED)					
S-LOC 10C	1100/24	431 (500-½)	1100/40	431 (500-¾)	
Knots	60	90	120	150	180
Min:Sec	5:00	3:20	2:30	2:00	1:40

EC-3, 10 SEP 2020 to 08 OCT 2020

EC-3, 10 SEP 2020 to 08 OCT 2020