

LOC/DME I-VQX 110.75 Chan 44(Y)	APP CRS 274°	Rwy ldg TDZE Apt Elev	7500 667 680
--	------------------------	-----------------------------	---

ILS RWY 28L (CAT II & III)

CHICAGO O'HARE INTL (ORD)

From VOGLR: RNAV 1-GPS required.
 Aircraft not GPS equipped - RADAR required for procedure entry.
 DME or RADAR required.

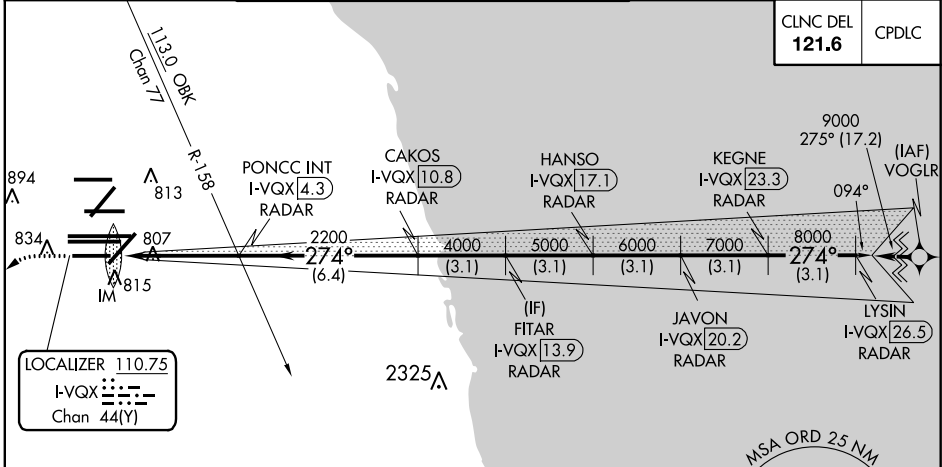
Simultaneous approach authorized.
 CAT II: RVR 1000 authorized with specific OPSPEC, MSPEC,
 or LOA approval and use of autoland or HUD to touchdown.

ALSF-2

MISSED APPROACH:
 Climb to 1200 then
 climbing left turn to
 4000 direct CGT
 VORTAC and hold.

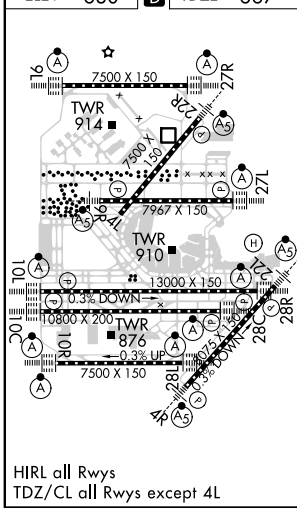
D-ATIS 135.4	CHICAGO APP CON 119.0 292.125	O'HARE TOWERS 128.15 348.0 (Rwy 9L/27R) 133.0 348.0 (10R/28L)		GND CON (TWR NORTH) 124.125	(TWR CENTER) 121.75 (OBND)
282.225		120.75 121.15 126.9 132.7 348.0 (CENTER)		118.05 (TWR SOUTH)	121.9 (IBND)
				226.675 (ALL TWRs)	

CLNC DEL 121.6	CPDLC
--------------------------	-------



MISSED APCH FIX
 CHICAGO HEIGHTS CGT 114.2 Chan 89
 ELEV 680 TDZE 667

ALTERNATE MISSED APCH FIX
 JOLIET
 JOT 112.3 Chan 70



1200	4000	CGT				
			FITAR I-VQX 13.9	JAVON I-VQX 20.2	LYSIN I-VQX 26.5	
			RADAR	RADAR	RADAR	
			PONCC INT I-VQX 4.3	HANSO I-VQX 17.1	KEGNE I-VQX 23.3	
			RADAR	RADAR	RADAR	
			CAKOS I-VQX 10.8			
			RADAR			
			IM 767	2200	4000	5000
			2200	4000	5000	6000
			274°	7000	8000	9000
			994°	4.7 NM	6.4 NM	3.1 NM
				3.1 NM	3.1 NM	3.1 NM
						GS 3.00°
						TCH 55
CATEGORY			A	B	C	D
S-ILS 28L			CAT II RA 106/12 100 DA 767			
S-ILS 28L			CAT III RVR 06			

CATEGORY II & III ILS - SPECIAL AIRCREW & AIRCRAFT CERTIFICATION REQUIRED

EC-3, 10 SEP 2020 to 08 OCT 2020

EC-3, 10 SEP 2020 to 08 OCT 2020