

LOC/DME I-HAC 110.5 Chan 42	APP CRS 273°	Rwy ldg TDZE Apt Elev	7782 654 680
---	------------------------	-----------------------------	---

ILS RWY 27L (SA CAT I)

CHICAGO O'HARE INTL (ORD)

From VOGLR: RNAV 1-GPS required.

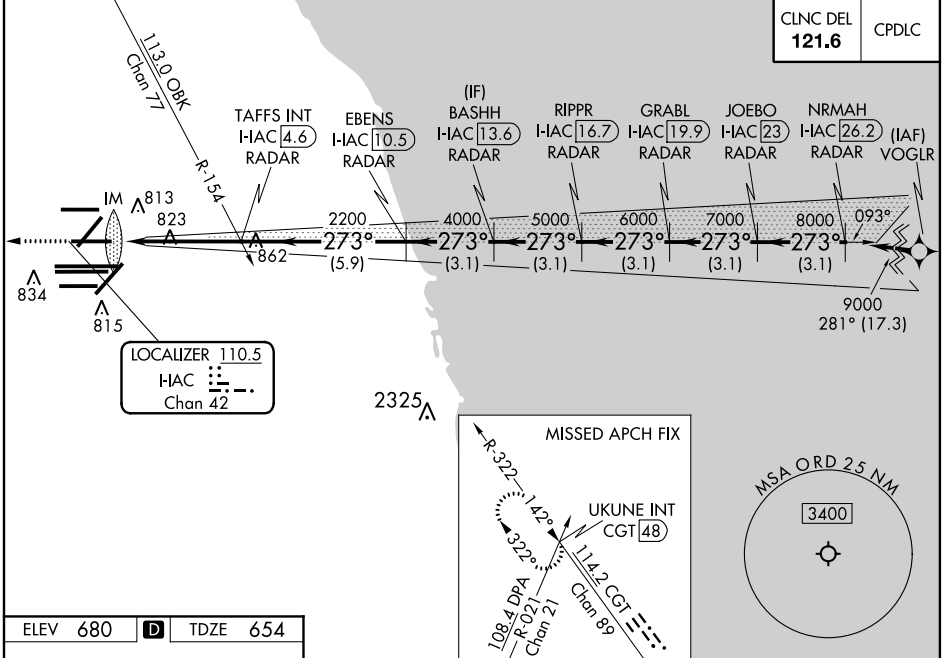
Aircraft not GPS equipped - RADAR required for procedure entry. DME or RADAR required.

ALSF-2

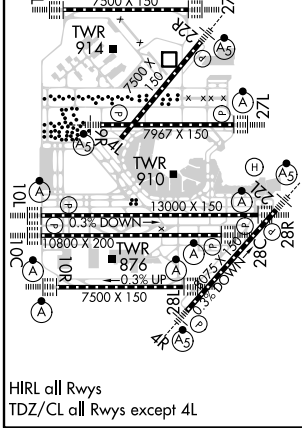
MISSED APPROACH: Climb to 1200 then climbing right turn to 4000 on heading 295° and on CGT VORTAC R-322 to UKUNE INT/CGT 48 DME and hold.

Simultaneous approach authorized.
Requires specific OPSPEC, MSPEC, or LOA approval and use of HUD to DH.

D-ATIS 135.4	CHICAGO APP CON 119.0 292.125	O'HARE TOWERS 128.15 348.0 (Rwy 9L/27R) 133.0 348.0 (10R/28L)	GND CON (TWR CENTER) 124.125	(TWR NORTH) 118.05	(TWR SOUTH) 121.75 (OBND)	(IBND) 121.9 (IBND)
282.225	119.0 292.125	120.75 121.15 126.9 132.7 348.0 (CENTER)	226.675 (ALL TWR)			



ELEV 680	D	TDZE 654
----------	----------	----------



1200	4000	CGT R-322	UKUNE INT	VGSI and ILS glidepath not coincident (VGSI Angle 3.00/TCH 67).
hdg 295°				
HAC DME ANTENNA	TAFS INT I-HAC 4.6 RADAR	EBENS I-HAC 10.5 RADAR	RIPPR I-HAC 16.7 RADAR	GRABL I-HAC 19.9 RADAR
				NRMAH I-HAC 26.2 RADAR
IM	2200	4000	5000	6000
				7000
				8000
				9000
				GS 3.00° TCH 55
1040'	4.7 NM	5.9 NM	3.1 NM	3.1 NM
3.1 NM	3.1 NM	3.1 NM	3.1 NM	3.1 NM
CATEGORY A	B	C	D	
S-ILS 27L	RA 164/14 150 DA 804			

SA CATEGORY I ILS-SPECIAL AIRCREW & AIRCRAFT CERTIFICATION REQUIRED

EC-3, 10 SEP 2020 to 08 OCT 2020

EC-3, 10 SEP 2020 to 08 OCT 2020