

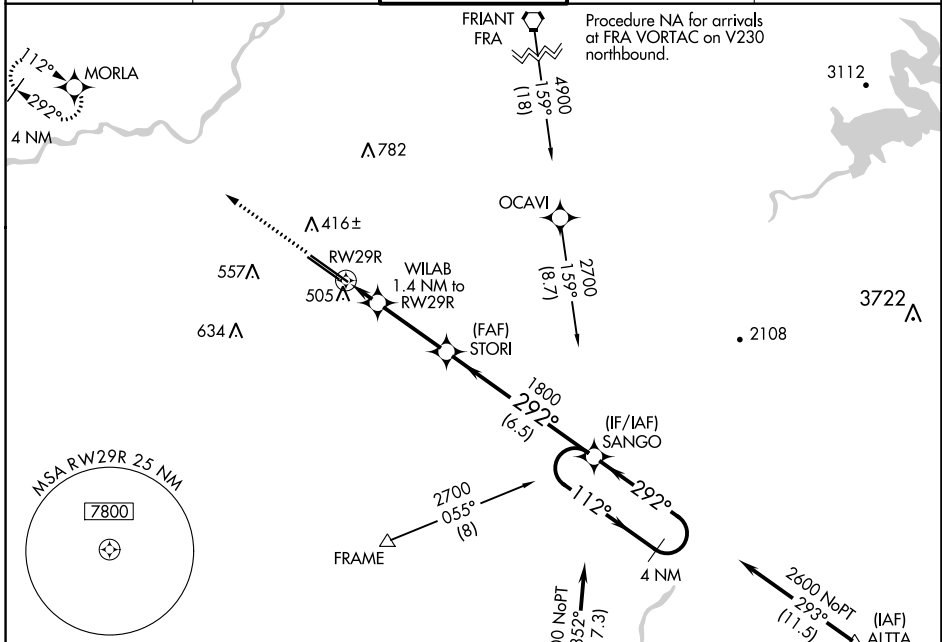
WAAS CH <b>81803</b> W29A	APP CRS <b>292°</b>	Rwy Idg <b>9227</b> TDZE <b>333</b> Apt Elev <b>336</b>
---------------------------------	------------------------	---

# RNAV (GPS) RWY 29R

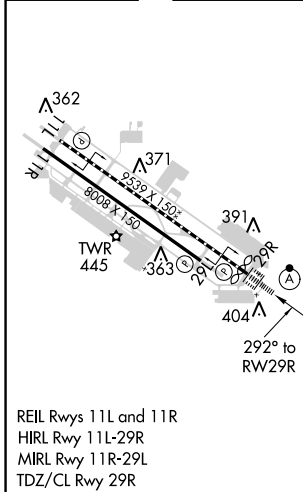
FRESNO YOSEMITE INTL (FAT)

<p>For uncompensated Baro-VNAV systems, LNAV/VNAV NA below 0°C (32°F) or above 54°C (130°F). DME/DME RNP-0.3 NA.</p>	<p>ALSF-2</p>	<p>MISSED APPROACH: Climb to 2000 direct MORLA and hold.</p>
--	---------------	--

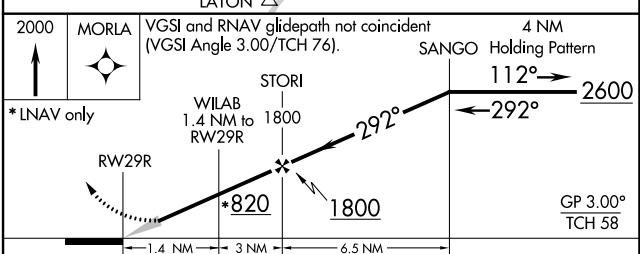
<p>ATIS <b>121.35 273.6</b></p>	<p>FRESNO APP CON <b>119.6 351.95</b></p>	<p>FRESNO TOWER <b>118.2 251.1</b></p>	<p>GND CON <b>121.7 348.6</b></p>	<p>CLNC DEL <b>124.35 348.6</b></p>
-------------------------------------	---	--	---------------------------------------	---



ELEV 336	<b>D</b>	TDZE 333
----------	----------	----------



REIL Rwy 11L and 11R  
HIRL Rwy 11L-29R  
MIRL Rwy 11R-29L  
TDZ/CL Rwy 29R



CATEGORY	A	B	C	D
LPV DA		533/18	200 (200-1/2)	
LNAV/VNAV DA		689/30	356 (400-5/8)	
LNAV MDA	760/24	427 (500-1/2)	760/40	427 (500-3/4)
<b>C</b> CIRCLING	820-1	484 (500-1)	920-1 1/2 584 (600-1 1/2)	920-2 584 (600-2)

SW-2, 10 SEP 2020 to 08 OCT 2020

SW-2, 10 SEP 2020 to 08 OCT 2020