

FRESNO, CALIFORNIA

HI TACAN RWY 29R

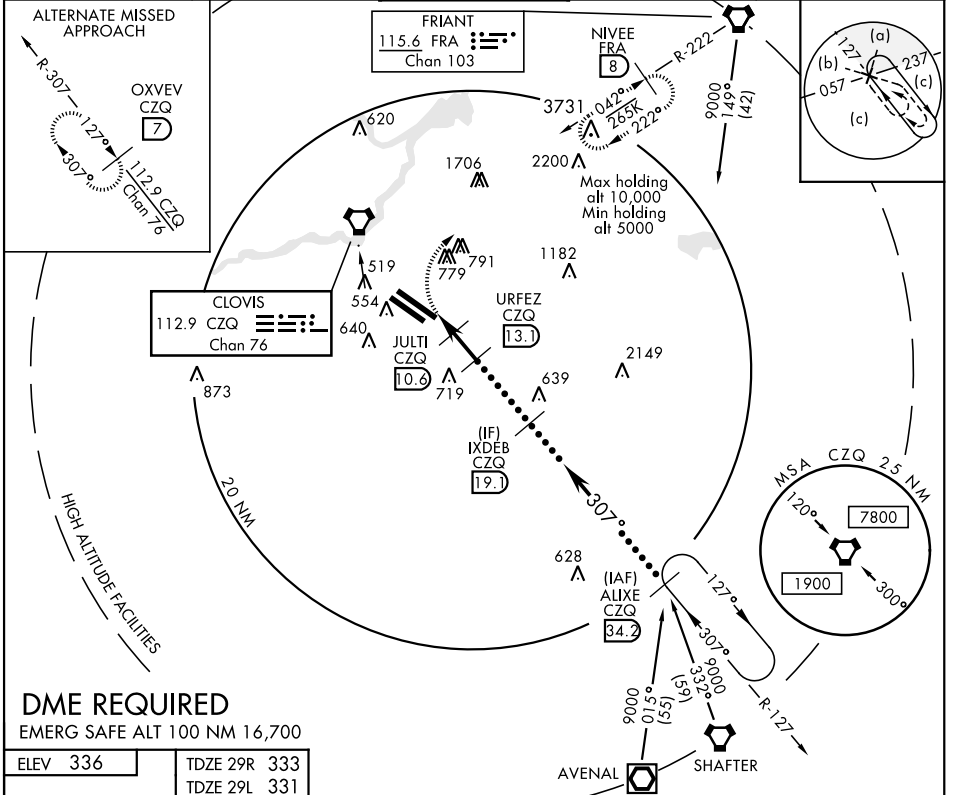
VORTAC CZQ 112.9 Chan 76	APCH CRS 307°	Rwy Idg 29R 9227 29L 8008	29L TDZE 333 331	336
--	-------------------------	---	-------------------------------	-----

JAL-162 [USAF] FRESNO YOSEMITE INTL (KFAT)

ALSF-2

 MISSED APPROACH: Climb to 800 then climbing right turn to 5500 on heading 330° and FRA VORTAC R-222 to NIVEE INT/FRA 8 DME and hold, continue climb-in-hold to 5500.

ATIS 121.35 273.6	FRESNO APP CON 132.35 323.25	FRESNO TOWER 118.2 251.1	GND CON 121.7 348.6	CLNC DEL 124.35 348.6
-----------------------------	--	------------------------------------	-------------------------------	---------------------------------



FRESNO, CALIFORNIA

36°47'N-119°43'W

FRESNO YOSEMITE INTL (KFAT)

Amtd 3 10OCT19

HI TACAN RWY 29R

SW-2, 10 SEP 2020 to 08 OCT 2020

SW-2, 10 SEP 2020 to 08 OCT 2020