

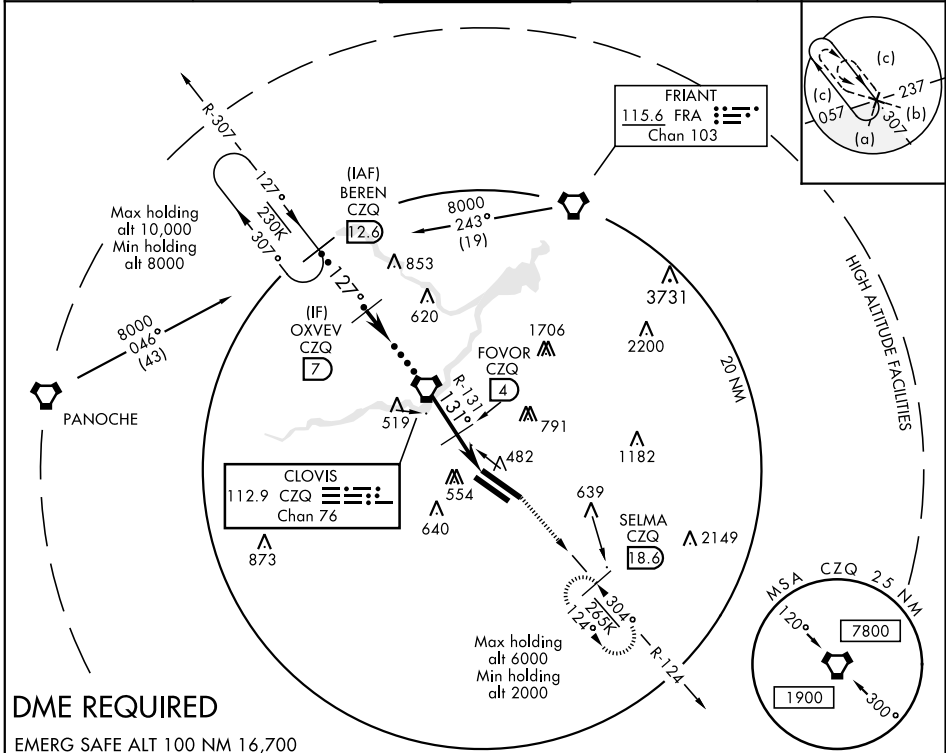
# HI-TACAN RWY 11L

VORTAC CZQ <b>112.9</b> Chan <b>76</b>	APCH CRS <b>131°</b>	Rwy Idg TDZE Arprt Elev	11L <b>9539</b> 11R <b>8008</b>	11L <b>336</b> 11R <b>333</b> <b>336</b>
--	-------------------------	-------------------------------	------------------------------------	--

JAL-162 [USAF] FRESNO YOSEMITE INTL (KFAT)

**MISSSED APPROACH:** Climbing left turn to 2000 on CZQ VORTAC R-124 to SELMA / 18.6 DME and hold.

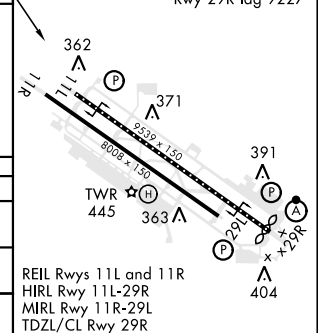
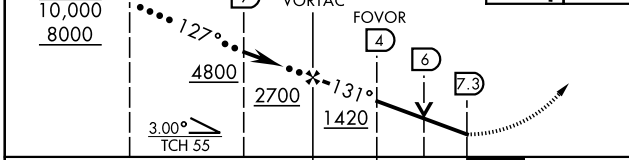
ATIS <b>121.35 273.6</b>	FRESNO APP CON <b>119.6 351.95</b>	FRESNO TOWER <b>118.2 251.1</b>	GND CON <b>121.7 348.6</b>	CLNC DEL <b>124.35 348.6</b>
-----------------------------	---------------------------------------	------------------------------------	-------------------------------	---------------------------------



## DME REQUIRED

EMERG SAFE ALT 100 NM 16,700

BEREN CZQ R-307 12.6	VGSi and descent angles not coincident (VGSi Angle 3.00/TCH 50)	2000 CZQ R-124	SELMA CZQ 18.6	ELEV 336	TDZE 11L 336 TDZE 11R 333
----------------------	---	----------------	----------------	----------	------------------------------



CATEGORY	C	D	E
S-11L	800-1½	464	(500-1½)
SIDESTEP 11R	800-1½ 467 (500-1½)	800-2	467 (500-2)
CIRCLING	920-1½ 584 (600-1½)	920-2 584 (600-2)	1140-2¾ 804 (900-2¾)

# HI-TACAN RWY 11L

SW-2, 10 SEP 2020 to 08 OCT 2020

SW-2, 10 SEP 2020 to 08 OCT 2020