

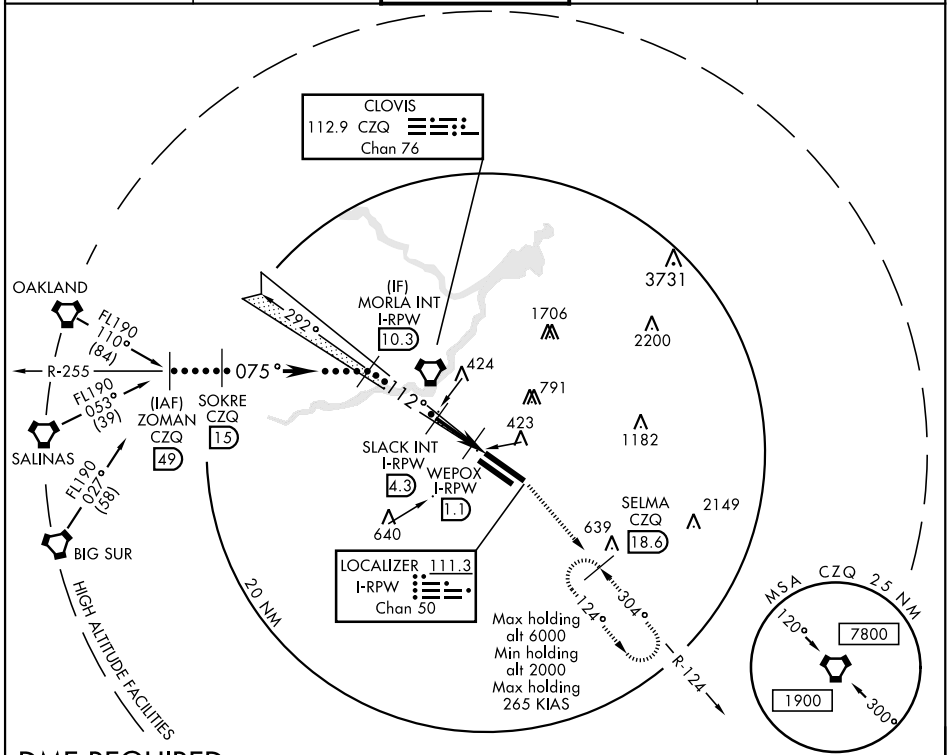
HI-LOC Z RWY 11L

LOC/DME I-RPW 111.3 Chan 50	APCH CRS 112°	Rwy Idg 11L 9539 11R 8008 TDZE 11L 336 11R 333 Arprt Elev 336
-------------------------------------------------	-------------------------	-----------------------------------------------------------------------------------------------------------------

JAL-162 [USAF] FRESNO YOSEMITE INTL (KFAT)

▽ MISSED APPROACH: Climb to 2000 on heading 112° and CZQ VORTAC R-124 to SELMA 18.6 DME and hold.

ATIS 121.35 273.6	FRESNO APP CON 119.6 351.95	FRESNO TOWER 118.2 251.1	GND CON 121.7 348.6	CLNC DEL 124.35 348.6
-----------------------------	---------------------------------------	------------------------------------	-------------------------------	---------------------------------

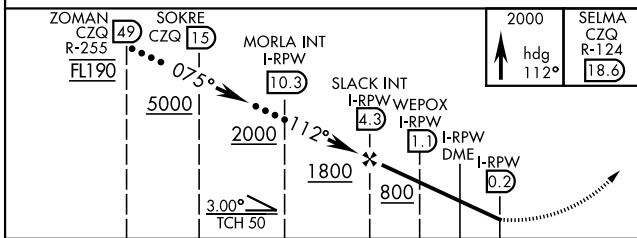


SW-2, 10 SEP 2020 to 08 OCT 2020

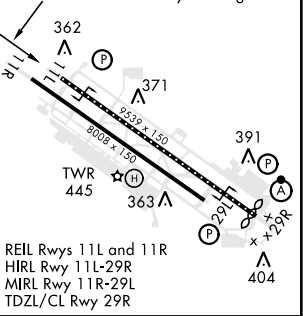
SW-2, 10 SEP 2020 to 08 OCT 2020

DME REQUIRED

EMERG SAFE ALT 100 NM 16,700



ELEV 336	TDZE 11L 336
	TDZE 11R 333
Rwy 29R Idg 9227'	



CATEGORY	C	D	E
S-LOC 11L	680/55	344	(400-1¼)
SIDE STEP RWY 11R	680-1½ 347 (400-1½)	680-2	347 (400-2)
C CIRCLING	920-1½ 584 (600-1½)	920-2 584 (600-2)	1140-2¾ 804 (900-2¾)

REIL Rwy 11L and 11R
HIRL Rwy 11L-29R
MIRL Rwy 11R-29L
TDZL/CL Rwy 29R

HI-LOC Z RWY 11L