

FRESNO, CALIFORNIA

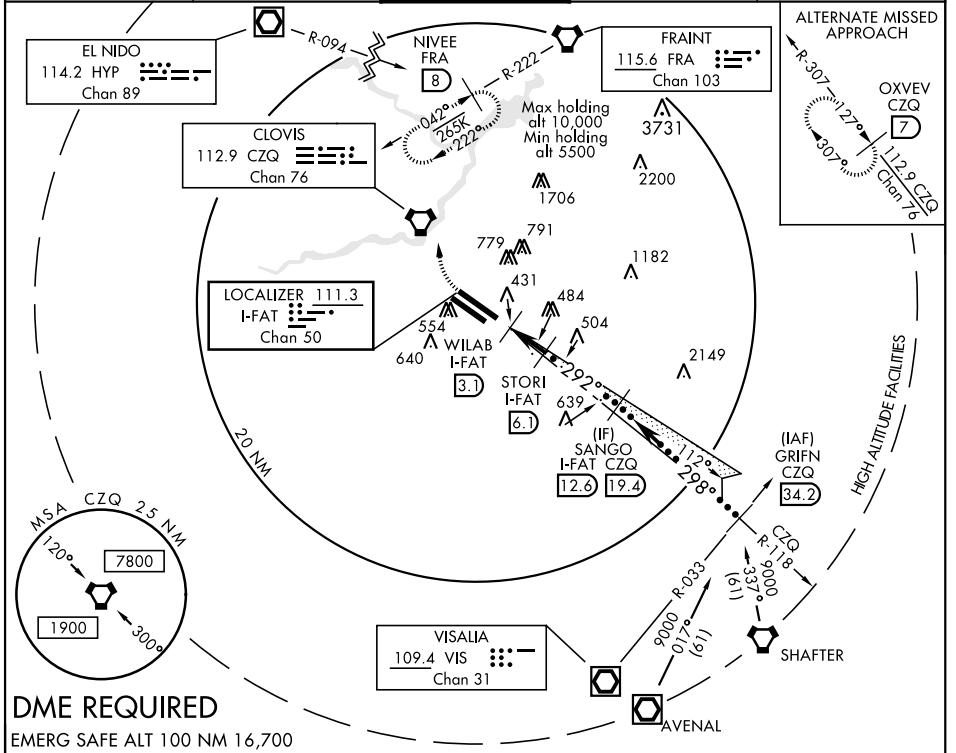
HI-ILS Z or LOC Z RWY 29R

LOC/DME I-FAT 111.3 Chan 50	APCH CRS 292°	Rwy Idg 29R 9227 29L 8008 TDZE 29R 333 29L 331 Arprt Elev 336
--	-------------------------	---

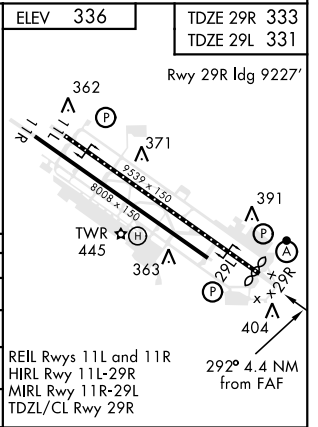
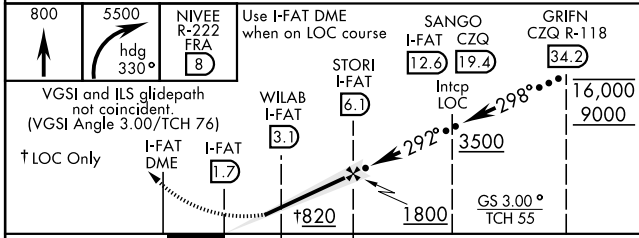
JAL-162 [USAF] FRESNO YOSEMITE INTL (KFAT)

▼ * When ALS inop, incr CAT CDE RVR to 40 and vis to ¾ mile.
** When ALS inop, incr CAT CDE RVR to 55 and vis to 1 mile.

ATIS 121.35 273.6	FRESNO APP CON 132.35 323.25	FRESNO TOWER 118.2 251.1	GND CON 121.7 348.6	CLNC DEL 124.35 348.6
-----------------------------	--	------------------------------------	-------------------------------	---------------------------------



DME REQUIRED
EMERG SAFE ALT 100 NM 16,700



CATEGORY	C	D	E
S-ILS 29R*	533/18	200	(200-½)
S-LOC 29R**	700/35	367	(400-¾)
SIDE STEP RWY 29L	700-1½ 369 (400-1½)	700-2	369 (400-2)
CIRCLING	920-1½ 584 (600-1½)	920-2 584 (600-2)	1140-2¾ 804 (900-2¾)

FRESNO, CALIFORNIA

36°47'N-119°43'W

FRESNO YOSEMITE INTL (KFAT)

Amtd 4 10OCT19

HI-ILS Z or LOC Z RWY 29R

SW-2, 10 SEP 2020 to 08 OCT 2020

SW-2, 10 SEP 2020 to 08 OCT 2020