

(OAL4.OAL) 17341

# COALDALE FOUR DEPARTURE

AL-162 (FAA)

FRESNO YOSEMITE INTL (FAT)  
FRESNO, CALIFORNIA

ATIS  
121.35 273.6  
CLNC DEL  
124.35 348.6  
GND CON  
121.7 348.6  
FRESNO TOWER  
118.2 251.1  
FRESNO DEP CON  
119.6 351.95

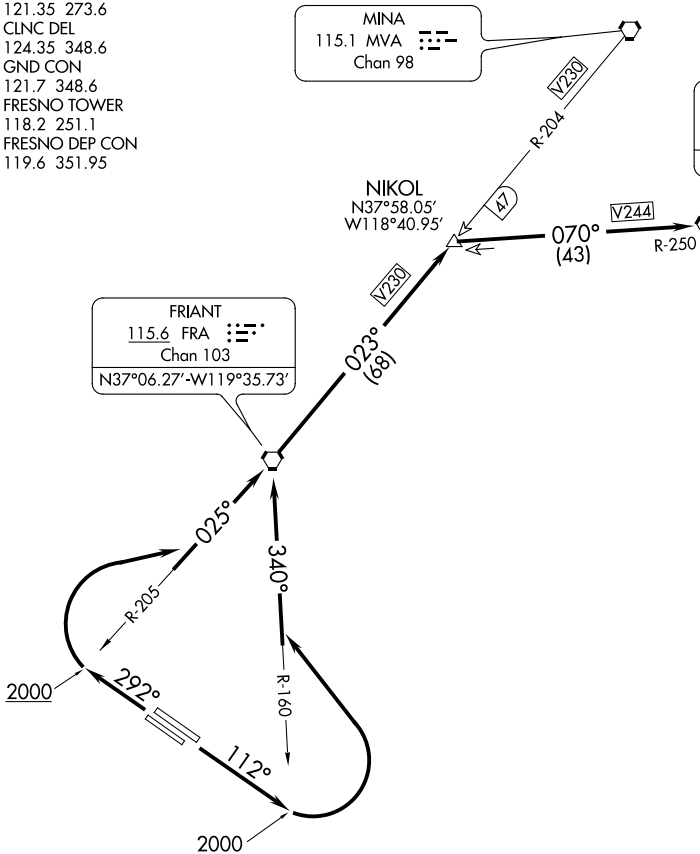
MINA  
115.1 MVA  
Chan 98

**TOP ALTITUDE:  
ASSIGNED BY ATC**

COALDALE  
117.7 OAL  
Chan 124  
N38°00.20'-W117°46.23'  
L-9, H-3

NIKOL  
N37°58.05'  
W118°40.95'

FRIANT  
115.6 FRA  
Chan 103  
N37°06.27'-W119°35.73'



**TAKEOFF MINIMUMS**  
Rwys 11L/R, 29L/R: Standard with minimum climb of 260' per NM to 10700.

NOTE: Chart not to scale.



### DEPARTURE ROUTE DESCRIPTION

TAKEOFF RUNWAYS 11L/R: Climb on heading 112° to 2000', then climbing left turn to intercept FRA R-160 to FRA VORTAC, thence. . . .  
TAKEOFF RUNWAYS 29L/R: Climb on heading 292° to 2000', then climbing right turn to intercept FRA R-205 to FRA VORTAC, thence. . . .

. . . .continue climb to 14300 on FRA VORTAC R-023 and MVA VORTAC R-204 to NIKOL INT and on OAL VORTAC R-250 to OAL VORTAC. Maintain ATC assigned altitude.

COALDALE FOUR DEPARTURE  
(OAL4.OAL) 07DEC17

FRESNO, CALIFORNIA  
FRESNO YOSEMITE INTL (FAT)

SW-2, 10 SEP 2020 to 08 OCT 2020

SW-2, 10 SEP 2020 to 08 OCT 2020