

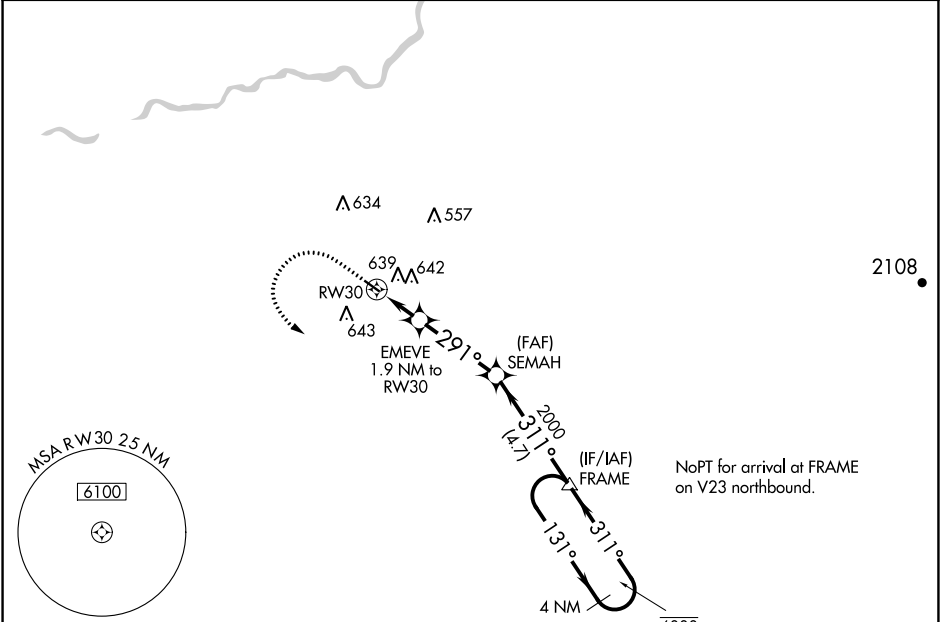
APP CRS 291°	Rwy Idg 3089
	TDZE 280
	Apt Elev 280

RNAV (GPS) RWY 30

FRESNO CHANDLER EXECUTIVE (FCH)

RNP APCH. ▼ Straight-in Rwy 30 NA at night, Circling Rwy 30 NA at night. Rwy 30 helicopter visibility reduction below 1 SM NA.	MISSED APPROACH: Climb to 1000 then climbing left turn to 2000 direct FRAME and hold.
---	---

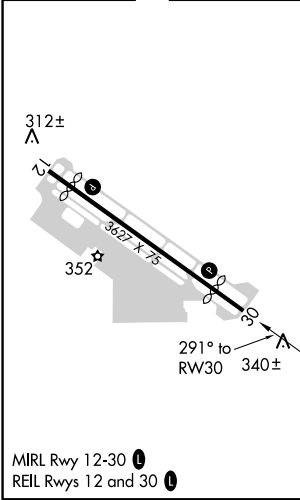
AWOS-3 135.225	FRESNO APP CON 119.0 323.25	CLNC DEL 119.0	UNICOM 123.0 (CTAF) 0
--------------------------	---------------------------------------	--------------------------	---------------------------------



SW-2, 10 SEP 2020 to 08 OCT 2020

SW-2, 10 SEP 2020 to 08 OCT 2020

ELEV 280	TDZE 280
-----------------	-----------------



	1000	2000	FRAME	SEMAH	FRAME	4 NM Holding Pattern
	↑	↶	△			
	EMEVE 1.9 NM to RWY 30		≤ 3.00° TCH 40	2000	311°	131° → 6000 / ← 311° 2000
	RWY 30		920	291°		
	-1.9		3.4 NM	4.7 NM		
CATEGORY	A	B	C	D		
LNAV MDA	800-1	520 (600-1)	800-1 3/8 520 (600-1 3/8)	NA		
C CIRCLING	960-1	680 (700-1)	960-2 680 (700-2)	NA		