

WAAS CH <b>61310</b> <b>W27A</b>	APP CRS <b>269°</b>	Rwy Idg TDZE Apt Elev	<b>6502</b> <b>139</b> <b>147</b>
--	------------------------	-----------------------------	---

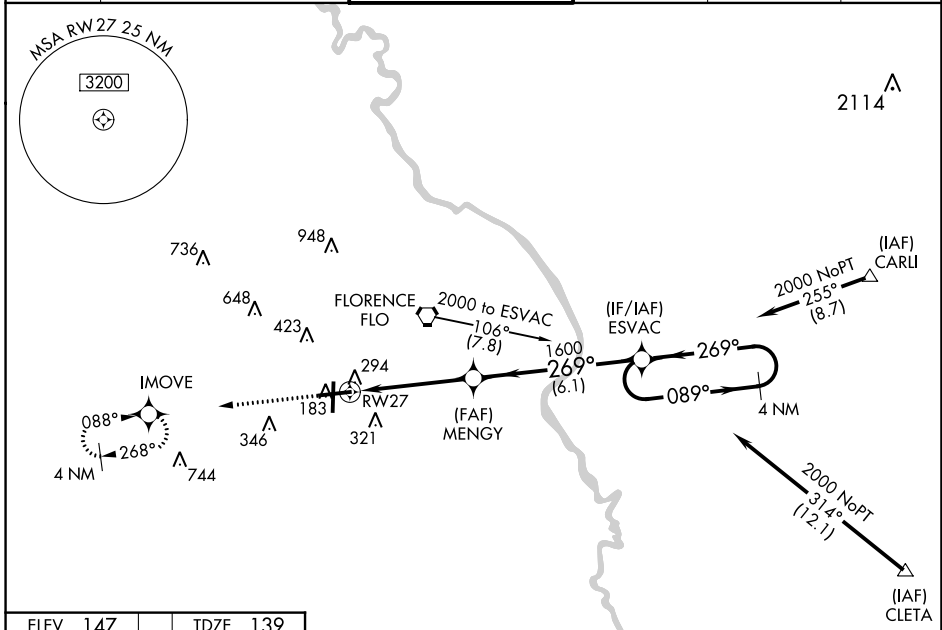
# RNAV (GPS) RWY 27

FLORENCE RGNL (FLO)

Baro-VNAV NA when using Darlington altimeter setting. For uncompensated Baro-VNAV systems, LNAV/VNAV NA below -15°C (5°F) or above 48°C (118°F). DME/DME RNP-0.3 NA. MISSED APPROACH: Climb to 2000 direct IMOVE and hold.

When local altimeter setting not received, use Darlington altimeter setting and increase all DA/MDA 60 feet. Increase LPV and LNAV/VNAV all Cats visibility ¼ mile and LNAV Cat D ½ mile. Night Landing: Rwy 1, 19 NA.

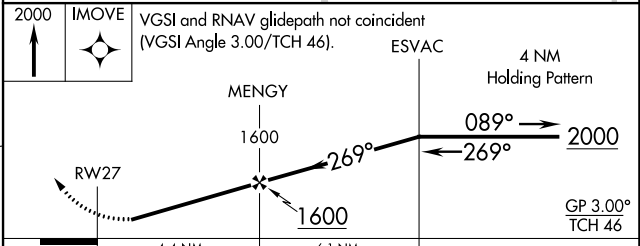
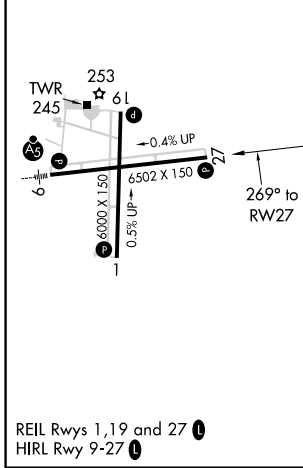
ATIS <b>123.625</b>	FLORENCE APP CON* <b>118.6 341.7</b> (256°-074°) <b>135.25 316.15</b> (075°-255°)	FLORENCE TOWER* <b>125.1</b> (CTAF) <b>353.85</b>	GND CON <b>121.9 353.85</b>	CLNC DEL <b>121.9 353.85</b>	UNICOM <b>122.95</b>
------------------------	---	--	--------------------------------	---------------------------------	-------------------------



SE-2, 10 SEP 2020 to 08 OCT 2020

SE-2, 10 SEP 2020 to 08 OCT 2020

ELEV <b>147</b>	TDZE <b>139</b>
-----------------	-----------------



CATEGORY	A	B	C	D
LPV DA		474-1¼	335 (400-1¼)	
LNAV/VNAV DA		595-1¾	456 (500-1¾)	
LNAV MDA	560-1	421 (500-1)	560-1¼	421 (500-1¼)
CIRCLING	640-1 493 (500-1)	660-1 513 (600-1)	660-1½ 513 (600-1½)	740-2 593 (600-2)