

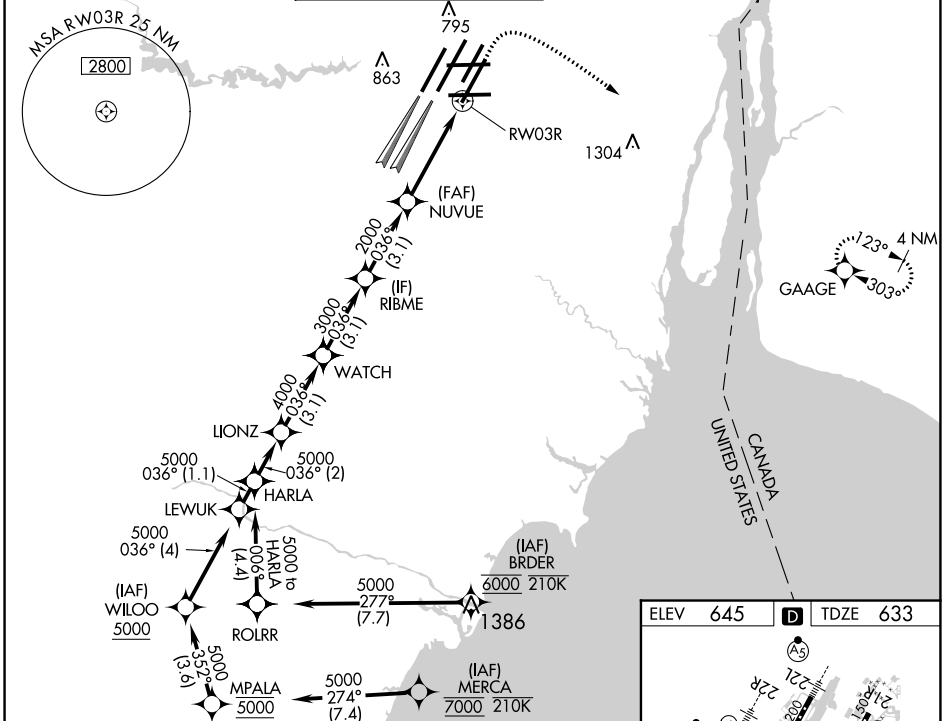
WAAS CH <b>61304</b> <b>W03A</b>	APP CRS <b>036°</b>	Rwy Idg <b>10001</b> TDZE <b>633</b> Apt Elev <b>645</b>
--	------------------------	--

# RNAV (GPS) Z RWY 3R

DETROIT METROPOLITAN WAYNE COUNTY (DTW)

RNP APCH.	<p>▼ For uncompensated Baro-VNAV systems, LNAV/VNAV NA below -19°C (-2°F) or above 54°C (130°F). Simultaneous approach authorized. LNAV procedure NA during simultaneous operations. Use of FD or AP required during simultaneous operations.</p>	ALSF-2 	MISSED APPROACH: Climb to 1100 then climbing right turn to 4000 direct GAAGE and hold, continue climb-in-hold to 4000.
-----------	---	------------	--

D-ATIS <b>133.675</b>	DETROIT APP CON <b>125.15 284.0</b>	METRO TOWER <b>118.4 317.725</b>	GND CON <b>121.8</b> (NW) <b>119.45</b> (NE) <b>132.725</b> (SW) <b>119.25</b> (SE)	CLNC DEL <b>120.65</b>	CPDLC
--------------------------	--	-------------------------------------	---	---------------------------	-------



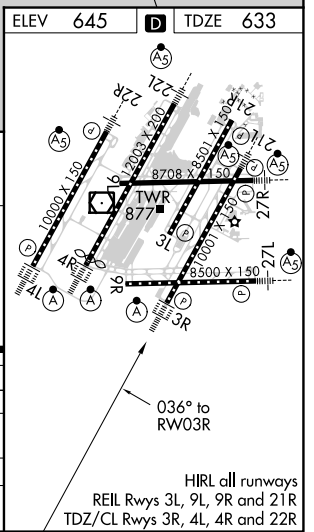
VGSI and RNAV glidepath not coincident (VGSI Angle 3.00/TCH 70).

HARLA	LIONZ	WATCH	RIBME	NUVUE	GAAGE
5000-036°	5000	4000	3000	2000	1100 4000
GP 3.00° TCH 54					*INAV only.
	2 NM	3.1 NM	3.1 NM	3.1 NM	2.9 NM 1.2

1100 4000 GAAGE

NUVUE 2000 \*1.2 NM to RW03R

RW03R



CATEGORY	A	B	C	D
LPV DA	833/18		200 (200-1/2)	
LNAV/VNAV DA	1013/35		380 (400-5/8)	
LNAV MDA	1080/24	447 (500-1/2)	1080/45	447 (500-7/8)
CIRCLING	1180-1	535 (600-1)	1180-1 1/2	1240-2
			535 (600-1 1/2)	595 (600-2)

EC-1, 10 SEP 2020 to 08 OCT 2020

EC-1, 10 SEP 2020 to 08 OCT 2020