

|  |                        |  |
|--|------------------------|--|
| WAAS<br>CH <b>99601</b><br><b>W22A</b> | APP CRS<br><b>216°</b> | Rwy Idg <b>12003</b><br>TDZE <b>637</b><br>Apt Elev <b>645</b> |
|--|------------------------|--|

# RNAV (GPS) Z RWY 22L

DETROIT METROPOLITAN WAYNE COUNTY (DTW)

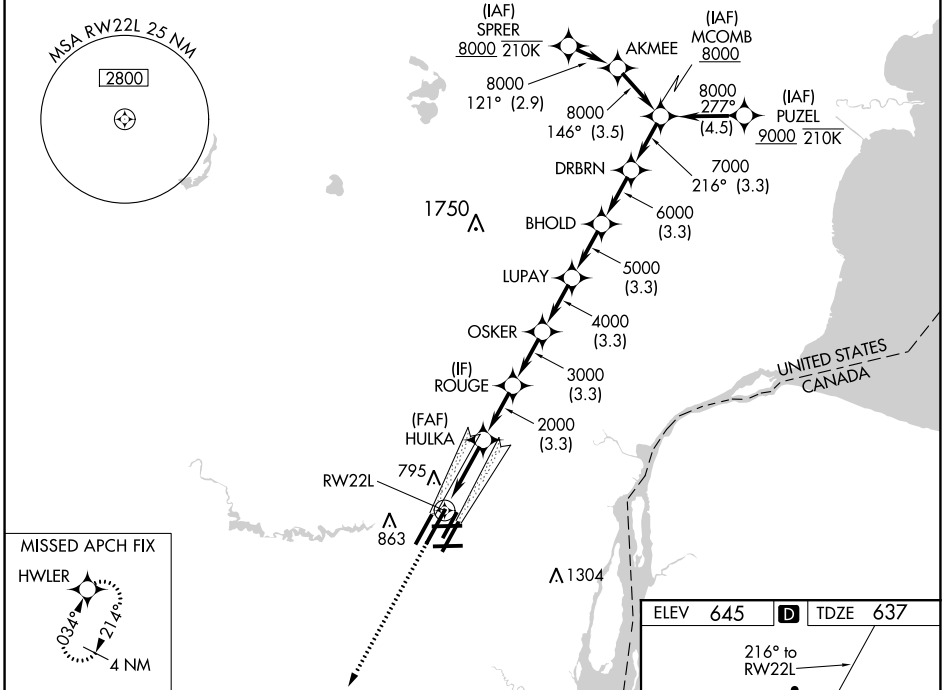
RNP APCH:

▼ For uncompensated Baro-VNAV systems, LNAV/VNAV NA below -10°C (14°F) or above 54°C (130°F). Simultaneous approach authorized. LNAV procedure NA during simultaneous operations. Use of FD or AP required during simultaneous operations. For inop ALS, increase LNAV/VNAV all Cats visibility to RVR 4500 and LNAV Cat C/D visibility to 1½ SM. #RVR 1800 authorized with use of FD or AP or HUD to DA.

MALSRS  
AS

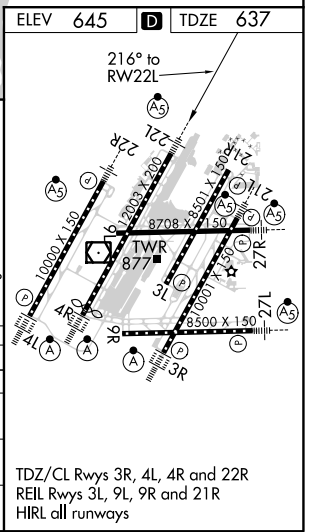
MISSED APPROACH:  
Climb to 4000 direct HWLER and hold.

|                          |  |                                       |   |                           |       |
|--------------------------|--|---------------------------------------|---|---------------------------|-------|
| D-ATIS<br><b>133.675</b> | DETROIT APP CON<br><b>124.05 284.0</b> | METRO TOWER<br><b>128.125 317.725</b> | GND CON<br><b>121.8 (NW) 119.45 (NE)</b><br><b>132.725 (SW) 119.25 (SE)</b> | CLNC DEL<br><b>120.65</b> | CPDLC |
|--------------------------|--|---------------------------------------|---|---------------------------|-------|



MISSED APCH FIX  
HWLER  
03.8°  
214°  
4 NM

|                   |         |                 |        |             |             |
|-------------------|---------|-----------------|--------|-------------|-------------|
| 4000              | HWLER   |                 |        |             |             |
| *LNAV only.       |         | RW22L           |        |             |             |
| * 1.3 NM to RW22L |         | HULKA 2000      |        |             |             |
|                   |         | ROUGE 3000      |        |             |             |
|                   |         | OSKER 4000      |        |             |             |
|                   |         | LUPAY 5000      |        |             |             |
|                   |         | BHOLD 6000      |        |             |             |
|                   |         | DRBRN 7000      |        |             |             |
|                   |         | MCOMB 8000      |        |             |             |
|                   |         | GP 2.85° TCH 60 |        |             |             |
| CATEGORY          | 3       | A               | B      | C           | D           |
| LPV DA#           |         |                 | 837/24 | 200 (200-½) |             |
| LNAV/VNAV DA      |         |                 | 938/24 | 301 (300-½) |             |
| LNAV MDA          | 1100/24 | 463 (500-½)     |        | 1100/50     | 463 (500-¾) |
| CIRCLING          | 1180-1  | 535 (600-1)     |        | 1180-1½     | 1240-2      |
|                   |         |                 |        | 535 (600-½) | 595 (600-2) |



EC-1, 10 SEP 2020 to 08 OCT 2020

EC-1, 10 SEP 2020 to 08 OCT 2020