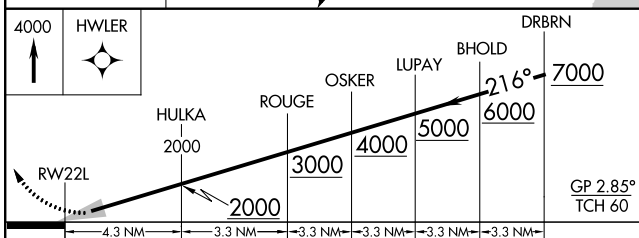
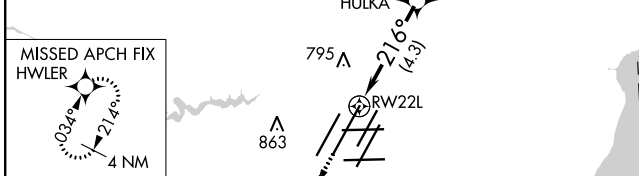
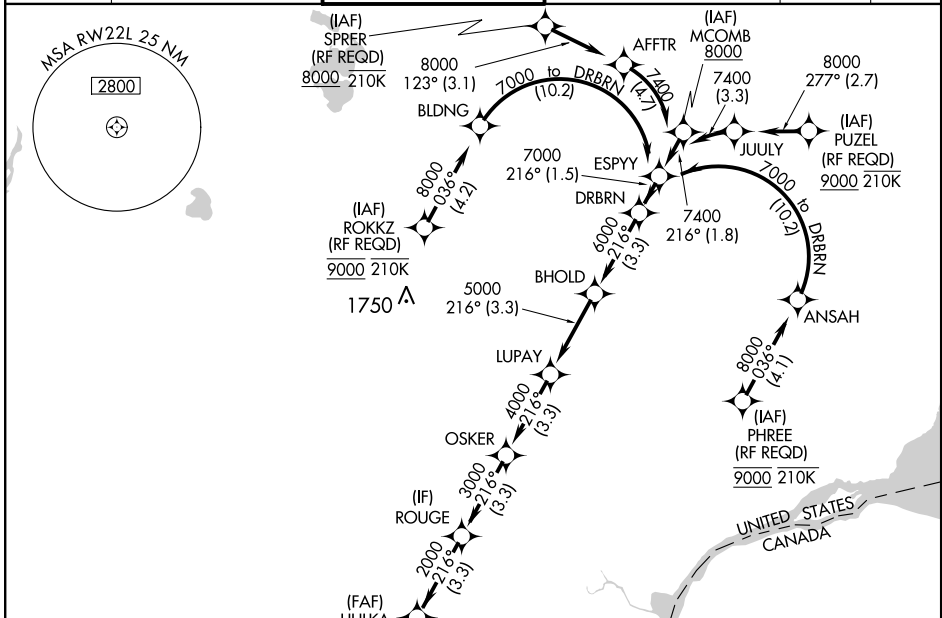


APP CRS	Rwy Idg	<b>12003</b>
<b>216°</b>	TDZE	<b>637</b>
	Apt Elev	<b>645</b>

# RNAV (RNP) X RWY 22L

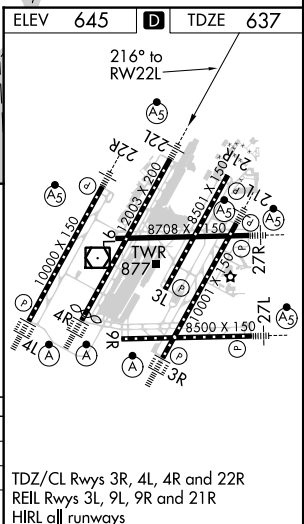
DETROIT METROPOLITAN WAYNE COUNTY (DTW)

RNP AR APCH.		METRO TOWER <b>128.125 317.725</b>		GND CON <b>121.8 (NW) 119.45 (NE)</b> <b>132.725 (SW) 119.25 (SE)</b>		MALSR	MISSED APPROACH: Climb to 4000 direct HWLER and hold.
▼ For uncompensated Baro-VNAV systems, procedure NA below -10°C (14°F) or above 54°C (130°F). Simultaneous approach authorized. For inop ALS, increase RNP 0.15 all Cats visibility to RVR 4500 and RNP 0.30 all Cats visibility to RVR 6000.		D-ATIS <b>133.675</b>		DETROIT APP CON <b>124.05 284.0</b>		CLNC DEL <b>120.65</b>	CPDLC



CATEGORY	A	B	C	D
RNP 0.15 DA	941/24		304 (300-½)	
RNP 0.30 DA	1040/40		403 (400-¾)	

## AUTHORIZATION REQUIRED



TDZ/CL Rws 3R, 4L, 4R and 22R  
REIL Rws 3L, 9L, 9R and 21R  
HIRL all runways

EC-1, 10 SEP 2020 to 08 OCT 2020

EC-1, 10 SEP 2020 to 08 OCT 2020