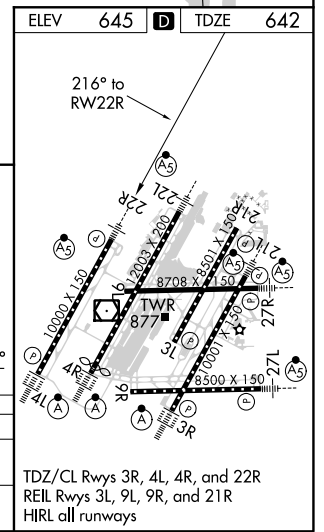
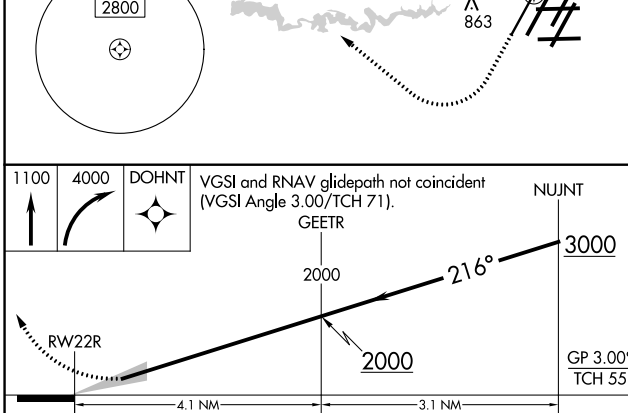
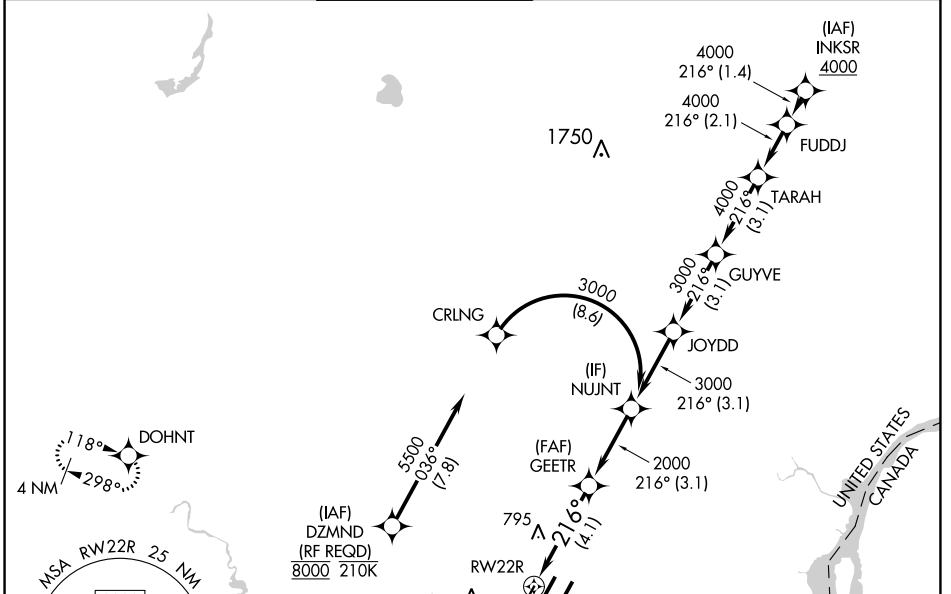


APP CRS	Rwy Idg	<b>10000</b>
<b>216°</b>	TDZE	<b>642</b>
	Apt Elev	<b>645</b>

# RNAV (RNP) W RWY 22R

DETROIT METROPOLITAN WAYNE COUNTY (DTW)

<b>RNP AR APCH.</b> ▼ For uncompensated Baro-VNAV systems, procedure NA below -19°C or above 54°C. Simultaneous approach authorized. For inop ALS, increase RNP 0.30 all Cats visibility to RVR 5500.		MALSR 	MISSED APPROACH: Climb to 1100 then climbing right turn to 4000 direct DOHNT and hold, continue climb-in-hold to 4000.		
D-ATIS	DETROIT APP CON	METRO TOWER	GND CON	CLNC DEL	CPDLC
<b>133.675</b>	<b>124.05 284.0</b>	<b>135.0 317.725</b>	<b>121.8</b> (NW) <b>119.45</b> (NE) <b>132.725</b> (SW) <b>119.25</b> (SE)	<b>120.65</b>	



CATEGORY	A	B	C	D
RNP 0.30 DA	987/30 345 (400-5/8)			

**AUTHORIZATION REQUIRED**

EC-1, 10 SEP 2020 to 08 OCT 2020

EC-1, 10 SEP 2020 to 08 OCT 2020