

WAAS CH 86220 W27A	APP CRS 276°	Rwy Idg 8708 TDZE 635 Apt Elev 645
--	------------------------	---

RNAV (GPS) RWY 27R

DETROIT METROPOLITAN WAYNE COUNTY (DTW)

RNP APCH

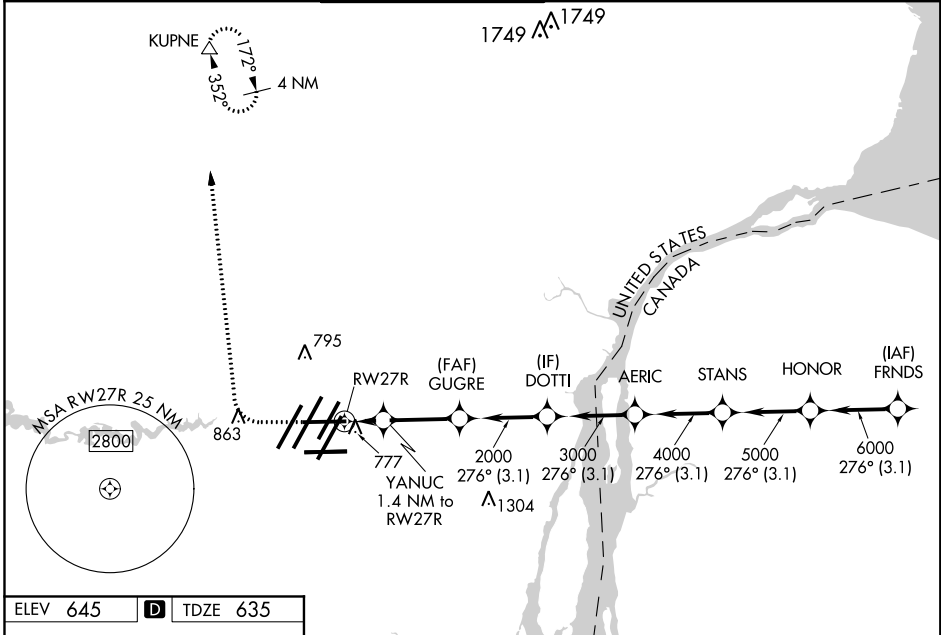
▼ For uncompensated Baro-VNAV systems, LNAV/VNAV NA below -20°C (-4°F) or above 54°C (130°F). For inop ALS, increase LNAV Cat C and D visibility to RVR 6000. Simultaneous approach authorized. LNAV procedure NA during simultaneous operations. Use of FD or AP required during simultaneous operations. ** RVR 1800 authorized with use of FD or AP or HUD to DA.

MALSR

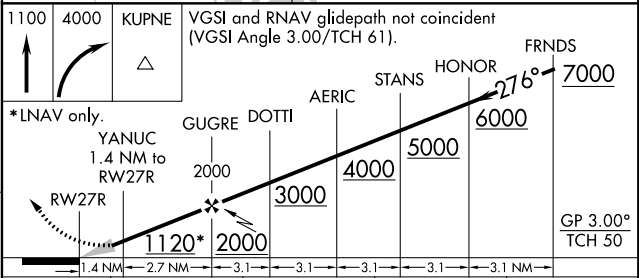
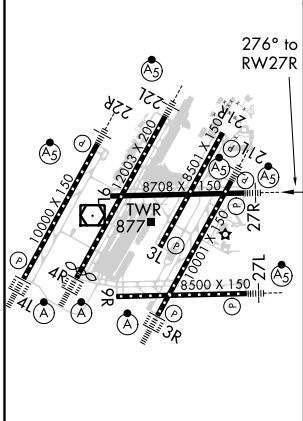


MISSED APPROACH: Climb to 1100 then climbing right turn to 4000 direct KUPNE and hold, continue climb-in-hold to 4000.

D-ATIS 133.675	DETROIT APP CON 125.15 284.0	METRO TOWER 118.4 317.725	GND CON 121.8 (NW) 119.45 (NE) 132.725 (SW) 119.25 (SE)	CLNC DEL 120.65	CPDLC
--------------------------	--	-------------------------------------	---	---------------------------	-------



ELEV 645	D	TDZE 635
----------	----------	----------



CATEGORY	A	B	C	D
LPV DA**		835/24	200 (200-½)	
LNAV/VNAV DA		938/24	303 (300-½)	
LNAV MDA	1040/24	405 (400-½)	1040/40	405 (400-¾)
C CIRCLING	1180-1	535 (600-1)	1180-1½ 535 (600-1½)	1240-2 595 (600-2)

TDZ/CL Rwy 3R, 4L, 4R and 22R
REIL Rwy 3L, 9L, 9R and 21R
HIRL all runways

EC-1, 10 SEP 2020 to 08 OCT 2020

EC-1, 10 SEP 2020 to 08 OCT 2020