

(BONZZ.KLYNK3) 19283

KLYNK THREE ARRIVAL (RNAV)

DETROIT METROPOLITAN WAYNE COUNTY (DTW)

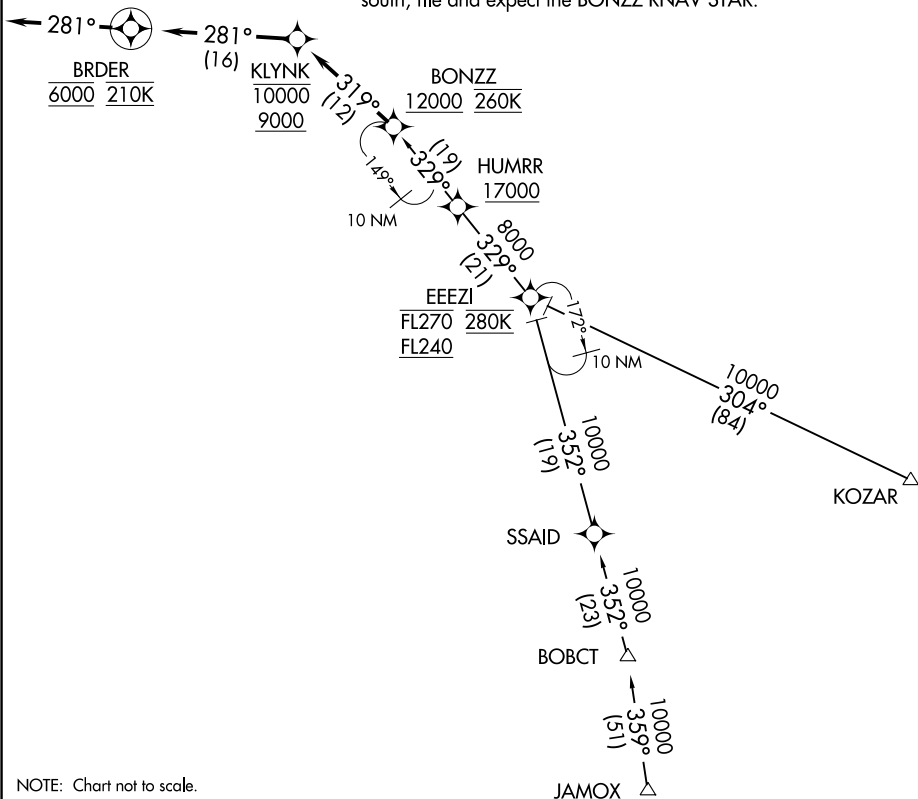
AL-119 (FAA)

DETROIT, MICHIGAN

D-ATIS
133.675
DETROIT APP CON
126.225 284.0

- NOTE: RADAR required.
- NOTE: RNAV 1.
- NOTE: DME/DME/IRU or GPS required.
- NOTE: Expect Rwy 3R.
- NOTE: Jet aircraft descend via Mach number until intercepting 280K. Maintain 280K until slowed by the STAR.
- NOTE: For use when DTW landing north or west. When DTW landing south, file and expect the BONZZ RNAV STAR.

Ldg KDTW



NOTE: Chart not to scale.

ARRIVAL ROUTE DESCRIPTION

JAMOX TRANSITION (JAMOX.KLYNK3)

KOZAR TRANSITION (KOZAR.KLYNK3)

From BONZZ on track 319° to cross KLYNK between 9000 and 10000, then on track 281° to cross BRDER at 6000 and at 210K, then on track 281°. Expect RADAR vectors to final approach course.

LOST COMMUNICATIONS

From BRDER, execute ILS Rwy 3R approach.

KLYNK THREE ARRIVAL (RNAV)

(BONZZ.KLYNK3) 10OCT19

DETROIT, MICHIGAN

DETROIT METROPOLITAN WAYNE COUNTY (DTW)

EC-1, 10 SEP 2020 to 08 OCT 2020

EC-1, 10 SEP 2020 to 08 OCT 2020