

LOC/DME I-DTW <b>110.7</b>	APP CRS <b>036°</b>	Rwy Idg <b>11494</b>
Chan <b>44</b>		TDZE <b>640</b>
		Apt Elev <b>645</b>

DETROIT METROPOLITAN WAYNE COUNTY (DTW)

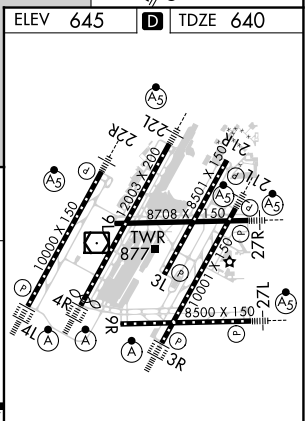
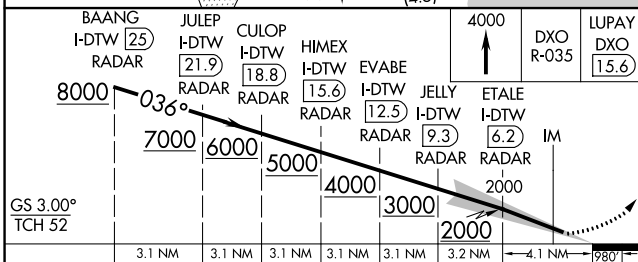
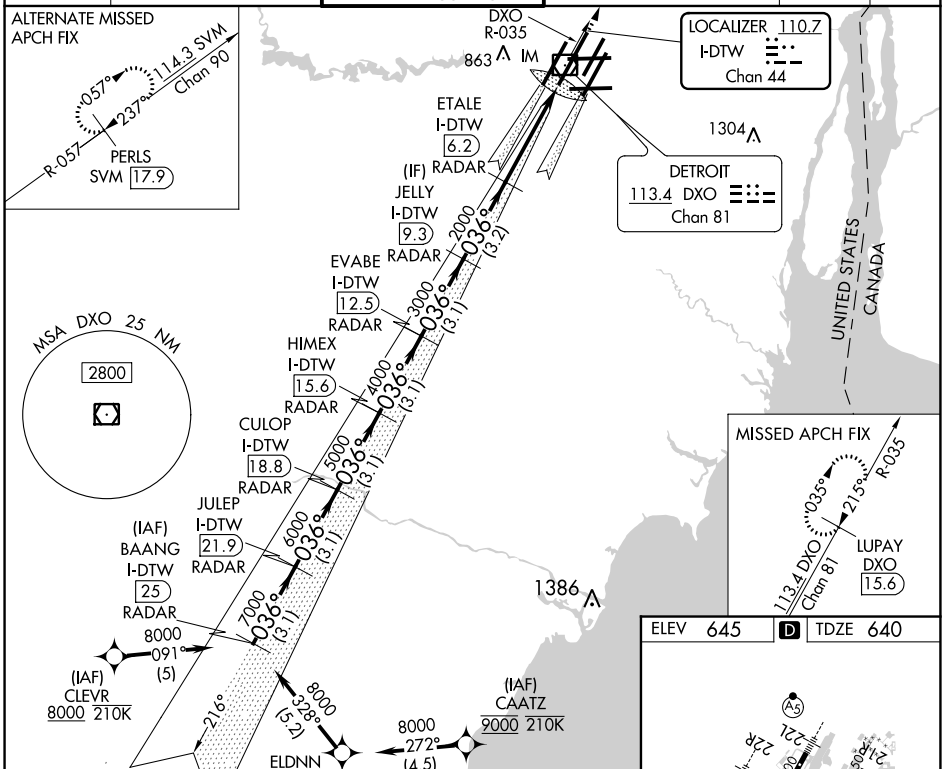
RNAV 1-GPS. DME or RADAR required. CLEVR, CAATZ and ELDNN: RNAV 1-DME/DME/IRU or GPS required. Aircraft not DME/DME/IRU or GPS equipped- RADAR required for procedure entry.

ALSIF-2

MISSED APPROACH: Climb to 4000 on DXO VOR/DME R-035 to LUPAY/DXO VOR/DME 15.6 DME and hold.

Simultaneous approach authorized. Use of FD or AP required during simultaneous operations. Dual VHF Comm required. See additional requirements on AAUP. Procedure NA when glideslope not available. Requires specific OPSPEC, MSPEC, or LOA approval and use of HUD to DH.

D-ATIS <b>133.675</b>	DETROIT APP CON <b>124.05 284.0</b>	METRO TOWER <b>128.125 317.25</b> <b>PRM 135.775</b>	GND CON <b>121.8 (NW) 119.45 (NE)</b> <b>132.725 (SW) 119.25 (SE)</b>	CLNC DEL <b>120.65</b>	CPDLC
--------------------------	--	--	---	---------------------------	-------



**SA CATEGORY I ILS - SPECIAL AIRCREW & AIRCRAFT CERTIFICATION REQUIRED**

BAANG I-DTW  $25$  RADAR

JULEP I-DTW  $21.9$  RADAR

CULOP I-DTW  $18.8$  RADAR

HIMEX I-DTW  $15.6$  RADAR

EVABE I-DTW  $12.5$  RADAR

JELLY I-DTW  $9.3$  RADAR

ETALE I-DTW  $6.2$  RADAR

IM

4000

DXO R-035

LUPAY DXO  $15.6$

8000  $036^\circ$

7000  $6000$

5000  $3000$

4000  $2000$

3000  $2000$

GS  $3.00^\circ$  TCH 52

3.1 NM 3.1 NM 3.1 NM 3.1 NM 3.1 NM 3.2 NM 4.1 NM 980'

CATEGORY A B C D

S-ILS 4R RA 154/14 150 DA 790

TDZ/CL Rwy 3R, 4L, 4R and 22R  
REIL Rwy 3L, 9L, 9R and 21R  
HIRL all runways

EC-1, 10 SEP 2020 to 08 OCT 2020

EC-1, 10 SEP 2020 to 08 OCT 2020